



Disaster Prevention Research Institute
Kyoto University, Uji, Kyoto, Japan
京都大学 防災研究所

DPRI Award 2017

研究教育貢献賞
国際学術貢献賞

選考経緯・業績紹介・講演資料

Feb. 21, 2017

研究教育貢獻賞

DPRI Award 2017 for Outstanding Contributions
in Research and Education

Dr. Michel Jaboyedoff
Professor of the University of Lausanne

國際學術貢獻賞

DPRI Award 2017 for Outstanding Contributions
in International Research Collaboration

Risk and Resilience program
International Research Institute for Applied
Systems Analysis

目 次

DPRI Award 設立の趣旨および第 4 回 DPRI Award 受賞者決定の経緯	1
----------------------------------------------	---

研究教育貢献賞

Michel Jaboyedoff 教授の御略歴	4
Michel Jaboyedoff 教授 防災研究所への貢献への足跡	6
Michel Jaboyedoff 教授 論文リスト	7
講演要旨	28
“Emerging techniques and impact of human activities in landslide risk management: 3D analysis and human induced landslides”	
講演内容に関連した論文	30
“Use of LIDAR in landslide investigations: a review”	

国際学術貢献賞

IIASA による総合防災研究への貢献	55
IIASA と防災研究所あるいは IDRiM Society による国際会議開催の歴史	57
IIASA と防災研究所による国際会議開催一覧 (2001 年～2009 年)	58
IDRiM Society による国際会議開催一覧 (2010 年～2016 年)	59
IIASA を構成する Research Program	60
Risk and Resilience Program	61
講演要旨	62
“From Kobe to Sendai. Tracing progress in risk discourse and analysis for informing risk management and climate adaptation”	
講演者 Reinhard Mechler 博士の御略歴・論文リスト	63

DPRI Award 設立の趣旨および第 4 回 DPRI Award 受賞者決定の経緯

研究教育担当副所長 西上欽也

防災研究所は、国内外で発生する自然災害を研究対象とすることから、従来から国際交流協定の締結、国際共同研究、海外災害調査や留学生・海外共同研究者の受け入れなど積極的に取り組んできました。平成 22 年度に認定され開始した共同利用・共同研究拠点は今年度から 2 期目に入り、また、防災研究所が事務局を務める世界防災研究所連合（GADRI）は今年度、第 3 回世界防災研究所サミットを開催するなど、防災研究所は頻発する国内外での自然災害に備えるための国際防災研究拠点として、その地位を確立するために、様々な新しい取り組みを推進しています。

これらの一環として平成 23 年 3 月に「京都大学防災研究所国際表彰規程」が制定され、DPRI Award が設立されました。その表彰の要件は概略下記のとおりです。

- 1) 防災研において、客員教員や共同研究者などとして滞在し、セミナーや共同研究などを実施し、防災研の研究教育に成果を上げた方
- 2) 防災研が主催する研究集会等において、基調講演、招待講演等を務め、又は企画運営に携わり、防災研の活動に貢献した方
- 3) 防災研が実施する国際共同研究及び現地調査等において貢献した方

平成 25 年度には第 1 回の防災研究所国際表彰 DPRI Award をカリフォルニア工科大学名誉教授の金森博雄博士に授与いたしました。また、平成 26 年度には第 2 回 DPRI Award をメキシコ自治大学教授のサンチェズセスマ博士に、平成 27 年度には第 3 回 DPRI Award をウォータールー大学教授のキース・ハイペル博士に授与いたしました。

今回平成 28 年度の国際表彰について、平成 28 年 11 月に防災研究所の千木良教授および多々納教授から推薦があり、表彰選考委員会で慎重に審議しました。その結果、ローザンヌ大学教授のミシェル・ジャボイエドフ博士を「研究教育貢献賞」として、また国際応用システム分析研究所のリスク・レジリエンスプログラムを「国際学術貢献賞」として、第 4 回の防災研究所国際表彰 DPRI

Award の受賞者として所長に推薦することを決定いたしました。その後、所長の承認を受け、これを教授会に諮り承認されました。

ジャボイエドフ教授は 1962 年スイスに生まれ、1999 年にローザンヌ大学から博士号 (Ph.D.) を取得後、スイス連邦工科大学ローザンヌ校での研究員などを経て、2005 年にローザンヌ大学地球・環境学部地球科学研究所教授に着任されました。2016 年からは地球・環境学部副学部長を務められています。ジャボイエドフ教授は、地すべり、落石などのマスマーブメントのモデル化、危険度評価についての第一線の研究者であり、特に、節理や断層などの不連続面の形態的抽出に有効なプログラム Coltop を 2003 年に開発し、斜面の安定解析に新しい道を開くとともに、地すべりへのレーザー計測の適用に関する重要な論文を発表するなど、高く評価されています。これらの研究成果は膨大な量の研究論文として発表されており、現在でも毎年数多くの研究論文を発表されています。ジャボイエドフ教授は、斜面における様々な移動・変形現象の学際的研究に関する国際会議「Slope tectonics」の創始者であり、またヨーロッパ地球科学連合 (EGU) においても地すべり災害研究分野の第一人者として活躍されています。

防災研究所においては、招へい外国人学者として 2015 年度に 1 ヶ月間滞在され、「斜面の形態分析による地すべりのすべり面推定」をテーマに共同研究を進められました。また、これらの研究内容に関連した講演・講義等を行い、斜面災害に関係する分野の学生・若手研究者への教育を熱心に行われました。

これらジャボイエドフ教授との共同研究や彼の学生・若手研究者への継続的な研究・教育の実績は防災研究所の国際プレゼンスの向上に大いに寄与してきました。ジャボイエドフ教授にはこれまでのご貢献に深く感謝するとともに、今後も受賞者に授与される終身称号の DPRI Fellow として、防災研究所の研究・教育に大所高所からご指導・ご助言いただければ大変ありがたく存じます。

国際応用システム分析研究所 (International Institute for Applied Systems Analysis, IIASA) は、1972 年、成熟社会に共通する諸課題を研究するために、オーストリアのウィーン近郊に設立されました。2016 年 11 月現在で 24 カ国が参加しています。IIASA は、社会の持続可能性および地球規模の変動が及ぼす影響について環境、経済、技術および社会発展等の多様な側面からの分析を行

い、また人間と環境の相互作用過程についての分析、最新の応用システム分析手法の開発などを行う世界有数の国際研究所です。

防災研究所と IIASA は、2001 年から 2009 年まで、毎年、9 回にわたり総合防災に関する国際会議（IIASA-DPRI Annual Meeting for Integrated Disaster Risk Management）を開催してきました。2009 年に京都で開催した第 9 回会議において、より多くの機関や研究者のリーダーシップを発揮できるように、新たに国際総合防災学会（International Society for Integrated Disaster Risk Management、IDRiM Society）を設立し、活動を継続することになりました。IDRiM Society においては、2010 年の第 1 回国際会議の開催（オーストリア、ウィーン環境・生命科学大学）以来、本年度（2016 年）の第 7 回会議の開催（イラン、イスファハン市）に至るまで、7 回の国際会議を開催し、総合防災に関する国際的な研究をリードしてきました。防災研究所と IIASA は、この間一貫して、IDRiM Society の主要な設立メンバーとして研究協力と貢献を続けています。Nature 誌において防災研究所が、総合防災に関する世界的な研究拠点として紹介されるに至ったのも、これらの活動によるところが大きいと考えられます。

IIASA の中でも上記活動の中心であるリスク・レジリエンスプログラム（Risk and Resilience Program）は、防災研究所が総合防災に関する国際的な研究展開を推進するうえで大きく貢献し、防災研究所の国際プレゼンスの向上に大いに寄与してきました。リスク・レジリエンスプログラムにはこれまでのご貢献に深く感謝するとともに、今後も受賞団体に授与される称号の DPRI Fellow Institute として、防災研究所とともに国際的な学術研究活動の発展に貢献いただければ大変ありがたく存じます。

Michel Jaboyedoff 教授の御略歴

氏名 : Michel Jaboyedoff
(ミシェル ジャボイエドフ)
生年月日 : 1962 年
国籍 : スイス、フランス

称号 : Professor, PhD. Geology

所属機関名 : University of Lausanne (ローザンヌ大学)



部局 : Institute of Earth Sciences (地球科学研究所)
Faculty of Geosciences and Environment (地球・環境学部)

所在地 : Geopolis 3793, Quartier Mouline, 1015 Lausanne, Switzerland
(ローザンヌ市, スイス)

現職名 : Full Professor (正教授)
Vice-Dean for Research, Communication and Quality
of the Faculty of Geosciences and Environment at University of Lausanne

専門分野 : Geology and Physics
(地質学、物理学)

主な学歴 : 大学以降の学位を取得した機関名、学位及び取得年
University of Lausanne, Bachelor + Master (Geology) 1986
University of Lausanne, Bachelor (Physics) 1990
University of Lausanne, PhD (Geology) 1999

主な職歴 機関名・部局：

1996年9月～2005年2月

Sorane SA company dealing with Energy efficient design (Part time job)

2001年6月～2002年10月

Researcher at EPFL Swiss Federal Institute of Technology, Lausanne – ENAC –
Rock mechanics laboratory

2003年2月～現在

President (founder) of Quanterra: dedicated to risk and climate changes

2005年3月～現在

Full Professor at Institute of Earth Sciences at Faculty of Geosciences and
Environment of University of Lausanne

2016年2月～現在

Adjunct professor at University of LAVAL (Québec)

2016年8月～2019年7月

Vice-Dean for Research, Communication and Quality of the Faculty of
Geosciences and Environment at University of Lausanne

Michel Jaboyedoff 教授 防災研究所への貢献の足跡

2006（平成 18）年度

7 月 18 日 防災研究所来訪 共同研究打ち合わせ

2007（平成 19）年度～現在

European Geosciences Union（ヨーロッパ地球科学連合）等における交流

2008（平成 20）年度

防災研究所の共同利用・共同研究拠点認定に際してのサポートレター拝受

2014（平成 26）年度

3 月 19 日～20 日 第 2 回 Global Summit of Research Institutes for Disaster Risk Reduction に参加

2015（平成 27）年度

7 月 13 日～8 月 13 日 長期滞在型共同研究（所内担当者：千木良雅弘教授）のため
招へい外国人学者として防災研究所に滞在

7 月 27 日～29 日 紀伊半島において共同調査を実施

8 月 3 日～5 日 徳島地すべり観測所に滞在

7 月 30 日 防災研究所にて講演

“Using DEM and surface information to characterize landslide failure surface geometry in soft and hard rock”

3 月 12 日（2016 年）GADRI Workshop on "New General of Geohazard Mapping and Strategy for its Social Application" に参加

Michel Jaboyedoff 教授 論文リスト

Books

1998

Rouiller, J.-D., Jaboyedoff, M., Marro, C., Phlipposian, F. & Mamin, M. (1998):
Pentes instables dans le Pennique valaisan. Rapport final PNR31. VDF 239 p.

1995

Jaboyedoff, M., Phlipposian, F., Mamin, M., Marro, C. & Rouiller, J.-D. (1995):
Distributions spatiales des discontinuités dans une falaise. Cahier du PNR31. VDF
90 p. (This book has been wrongly attributed to Rouiller as first authors)

Edited Book

2016

Sudmeier-Rieux, K., Jaboyedoff, M., Fernandez, M., Penna, I. and Gaillard, JC.
(2016): Identifying emerging issues in Disaster Risk Reduction, Migration, Climate
change and Sustainable development. Shaping debates and policies, Springer. 281 p.

2011

Jaboyedoff, M. (editor) (2011): Slope tectonics. Geological Society Special Publication.

Edited issues

Abellan A., Derron M.-H. and Jaboyedoff M. (Guest Editors) (2015): Use of LiDAR and
3D point clouds in Geohazards. Remote Sensing.
http://www.mdpi.com/journal/remotesensing/special_issues/geohazards#editors

Jaboyedoff M., Derron M.-H., Buckley S. and Scaioni M. (Guest Editors) (2015): Vertical
Geology – Lausanne 2014. European Journal of Remote Sensing.
<http://www.aitjournal.com/>

Baron I. and Jaboyedoff M. (editors) (2013): Slope Tectonics: Structures and Slope
Failures. Tectonophysics, Volume 605, Pages 1-168 (11 October 2013).

Catani F., Casagli N., Segoni S., Tofani V., Jaboyedoff M., and Günther A. (eds.) (2013):
New developments and applications in early warning, monitoring and remote
sensing of landslides. NHES - Special Issue.
http://www.nat-hazards-earth-syst-sci.net/special_issue168.html

Nicolet P., Derron M.-H. Jaboyedoff M. (Eds.) (2013, printed). Les dangers naturels en
Suisse - pratiques et développements - Comptes rendus de la deuxième Journée de
Rencontre sur les Dangers Naturels (Université de Lausanne, 18 février 2011).

Société vaudoise des Sciences naturelles - MEMOIRE - VOL. 25.

Derron, M.-H. and Jaboyedoff M (editors) (2010): LIDAR and DEM techniques for landslides monitoring and characterization. NHES special Issue (http://www.nat-hazards-earth-syst-sci.net/special_issue85.html).

Jaboyedoff, M. and Crosta, G.B. and Arattano, M. (editors) (2005): Landslides and debris-flows: analysis, monitoring, modeling and hazard assessment. NHES Special Issue. (http://www.copernicus.org/EGU/nhess/special_issues.html).

Publications in peer reviewed ranked journals

2016

1. Bechet, J., Duc, J., Loye, A., Jaboyedoff, M., Mathys, N., Malet, J.-P., Klotz, S., Le Bouteiller, C., Rudaz, B., and Travelletti, J. (2016): Detection of seasonal cycles of erosion processes in a black marl gully from a time series of high-resolution digital elevation models (DEMs), *Earth Surf. Dynam.* 4, 781-798, doi:10.5194/esurf-4-781-2016.
2. Aye Z.C., Charrière M., Olyazadeh R., Derron M.-H. and Jaboyedoff M. (2016): Evaluation of an open-source collaborative webgis prototype in risk management with students. *Spatial Information Research*, 24, 169–179.
3. Olyazadeh, R.Aye, Z.C., Jaboyedoff, M., Derron, M-H (2016): Prototype of an Open-Source Web-GIS platform for Rapid Disaster Impact Assessment. *Spatial Information Research*, 24, 203–210.
4. Longchamp, C., Abellan, A., Jaboyedoff, M., and Manzella, I. (2016): 3-D models and structural analysis of rock avalanches: the study of the deformation process to better understand the propagation mechanism, *Earth Surf. Dynam.*, 4, 743-755, doi:10.5194/esurf-4-743-2016.
5. Franz, M., Carrea, D., Abellán, A, Derron, M-H, Jaboyedoff, M. (2016). Use of targets to track 3D displacements in highly vegetated areas affected by landslides. *Landslides*, 13: 821–831. DOI 10.1007/s10346-016-0685-7.
6. Leibundgut G, Sudmeier-Rieux K., Devkota S., Jaboyedoff M., Derron M.-H., Penna I. and Nguyen L. (2016): Rural earthen roads impact assessment in Phewa watershed, Western region, Nepal. *Geoenvironmental Disasters*, 3:13.
7. Loye A., Jaboyedoff M., Theule J.I., and Liébault F. (2016): Headwater sediment dynamics in a debris flow catchment constrained by high-resolution topographic surveys. *Earth Surf. Dynam.* 4, 489–513.
8. Pedrazzini A., Humair F., Jaboyedoff M. and Tonini M. (2016): Characterization and spatial distribution of gravitational slope deformation in the Upper Rhone

- catchment (western Swiss Alps). *Landslides*: 13:259-277. DOI 10.1007/s10346-015-0562-9.
9. Michoud C., Baumann V., Lauknes T.R., Penna I, Derron M.-H., Jaboyedoff M. (2016): Large Slope Deformations Detection and Monitoring along Shores of the Potrerillos Dam Reservoir, Argentina, based on a Regional 3 Small-Baseline InSAR Approach. *Landslides*: 13, 451-465. DOI 10.1007/s10346-015-0583-4.
 10. Aristizabal, E.V., Vélez, J.I. Martínez, H.E. and Jaboyedoff, M. (2016): SHIA_LANDSLIDE: a distributed physically based model to forecast the temporal and spatial occurrence of shallow landslides triggered by rainfall in tropical and mountainous basins. *Landslides*: 13, 497-517. DOI 10.1007/s10346-015-0580-7
 11. Cloutier, C., Locat, J., Couture, R., Jaboyedoff, M. (2016) The anatomy of an active slide: the Gascons rockslide, Québec, Canada. *Landslides*, 13, 241-258. doi:10.1007/s10346-015-0566-5
 12. Nicolet, M. Jaboyedoff M., Cloutier C., Crosta G.B. and Lévy S. (2015): Brief Communication: On direct impact probability of landslides on vehicles. *Nat. Hazards Earth Syst. Sci.*, 16, 995–1004.
 13. D'Amato, J., Hantz, D., Guerin, A., Jaboyedoff, M., Baillet, L., and Mariscal, A. (2016): Influence of meteorological factors on rockfall occurrence in a middle mountain limestone cliff, *Nat. Hazards Earth Syst. Sci.* 16, 719-735, doi:10.5194/nhess-16-719-2016.
 14. Abellan, A., Derron, M-H., Jaboyedoff, M., (2016). “Use of 3D Point Clouds in Geohazards” Special Issue: Current Challenges and Future Trends. *Remote Sensing* 8, 130. DOI: 10.3390/rs8020130
 15. Charrière M., Humair F., Froese C., Jaboyedoff M., Pedrazzini A. and Longchamp C. (2016): From the source area to the deposit: collapse, fragmentation and propagation of the Frank Slide. *GSA Bulletin*, 128, 332-351. doi: 10.1130/B31243.1
 16. Aye, Z.C., Jaboyedoff, M., Derron, M-H., van Westen, C.J., Hussin, H.Y., Ciurean, R.L., Frigerio, S., Pasuto, A. (2016). An interactive web-GIS tool for risk analysis: a case study in the Fella River Basin, Italy (accepted). *Nat. Hazards Earth Syst. Sci.*, 16, 85–101. doi:10.5194/nhess-16-85-2016
 17. Carrea D., Abellan A., Humair F., Matasci B., Derron M.-H., Jaboyedoff M. (2016): Correction of terrestrial LiDAR intensity channel using Oren–Nayar reflectance model: An application to lithological differentiation. *ISPRS Journal of Photogrammetry and Remote Sensing*: 113, 17–29.
 18. Aye, Z.C., Sprague, T., Cortes, V.J., Prenger-Berninghoff, K., Jaboyedoff, M. and Derron, M.H. (2016): A collaborative (web-GIS) framework based on empirical

data collected from three case studies in Europe for risk management of hydro-meteorological hazards. *Int. J. of Disaster Risk Reduction*, 15, 10-23, doi:10.1016/j.ijdr.2015.12.001

2015

19. Sudmeier-Rieux, K., Paleo, U.F, Garschagen, M., Estrella, M. Renaud, F.G. and Jaboyedoff, M. (2015). "Opportunities, incentives and challenges to risk sensitive land use planning: Lessons from Nepal, Spain and Vietnam." *Int. J. of Disaster Risk Reduction* 14: 205-224.
20. Kropat G., Bochud F., Jaboyedoff M., Laedermann J.-P., M. Palacios M. and Baechler S. (2015): Improved predictive mapping of indoor radon concentrations using ensemble regression trees based on automatic clustering of geological units. *Journal of Environmental Radioactivity*, 147, 51-62.
21. Jaboyedoff M, Derron M.-H., Buckley S.J. and Scaioni M. (2015): Introduction to Vertical Geology thematic issue. *European Journal of Remote Sensing*: 48, 479 - 487. DOI: 10.5721/EuJRS20154827
22. Matasci B., Carrea C., Abellan A., Derron M.-H., Humair F., Jaboyedoff M., Metzger R. (2015): Geological mapping and fold modeling using Terrestrial Laser Scanning point clouds: application to the Dents-du-Midi limestone massif (Switzerland). *Conf. Vertical Geology - Lausanne 2014. European Journal of Remote Sensing*: 48,569 – 591. DOI: 10.5721/EuJRS20154832
23. Guerin A., Nguyen L., Abellán A., Carrea D., Derron M.-H., Jaboyedoff M. (2015) - Common problems encountered in 3D mapping of geological contacts using high-resolution terrain and image data. *Conf. Vertical Geology - Lausanne 2014. European Journal of Remote Sensing*: 48, 661 – 672. DOI: 10.5721/EuJRS20154836
24. Humair F., Abellan A., Carrea D., Matasci B., Epard J.-L. , Jaboyedoff M. (2015) Geological layers detection and characterisation using high resolution 3D point clouds: example of a box-fold in the Swiss Jura Mountains. *Conf. Vertical Geology - Lausanne 2014. European Journal of Remote Sensing*: 48, 541 – 568. DOI: 10.5721/EuJRS20154831
25. Kromer R, Abellán A., Hutchinson J., Lato M., Edwards T. and Jaboyedoff M. (2015): A 4D filtering and calibration technique for small-scale point cloud change detection with a Terrestrial Laser Scanner. *Remote Sens.* :7(10), 13029-13052; doi:10.3390/rs71013029
26. Böhme M., Oppikofer T., Longva O., M. Jaboyedoff M., Hermanns R.L., Derron M.-H. (2015): Analyses of past and present rock slope instabilities in a fjord valley:

- Implications for hazard estimations. *Geomorphology*: 248, 464–474.
27. Kropat G., Bochud F., Jaboyedoff M., Laedermann J.-P., M. Palacios M. and Baechler S. (2015): Improved predictive mapping of indoor radon concentrations using ensemble regression trees based on automatic clustering of geological units. *Journal of Environmental Radioactivity*: 147, 51-62. [dx.doi.org/10.1016/j.jenvrad.2015.05.006](https://doi.org/10.1016/j.jenvrad.2015.05.006)
 28. Matasci B., Jaboyedoff M., Loye A., Pedrazzini A., Derron M.-H., Pedrozzi G. (2015): Impact of fracturing pattern on rockfall susceptibility and erosion rate in stratified limestone. *Geomorphology*: 241, 83-97.
 29. Aye, Z.C., Jaboyedoff, M., Derron, M.-H., van Westen, C.J (2014). Prototype of a web-based participative decision support platform in natural hazards and risk management. *ISPRS Int. J. Geo-Inf.* 2015, 4, 1201-1224; doi:10.3390/ijgi4031201.
 30. Mavrouli O., Corominas J. & Jaboyedoff M. (2015): Size distribution for potentially unstable rock masses and in-situ rock blocks using LIDAR generated Digital Elevation Models. *Rock Mechanics and Rock Engineering*: 48, 1589-1604. DOI 10.1007/s00603-014-0647-0
 31. Cloutier C., Agliardi F., Crosta G.B., Frattini P., Froese C., Jaboyedoff M., Locat J., Michoud C. and Marui H. (2015). The First International Workshop on Warning criteria for Active Slides: technical issues, problems and solutions for managing early warning systems. *Landslides*: 12, 205-212. DOI 10.1007/s10346-014-0530-9
 32. Theule J. I., Liébault F., Laigle D., Loye A., and Jaboyedoff M. (2015): Channel scour and fill by debris flows and bedload transport. *Geomorphology*: 243, 92–105. doi:10.1016/j.geomorph.2015.05.003
 33. Cloutier C., Locat J., Couture R., Jaboyedoff M. (2015): The anatomy of an active slide: the Gascons rockslide, Québec, Canada. *Landslides*, 12, 205-212. DOI 10.1007/s10346-015-0566-5.
 34. Bechet J., Duc J., Jaboyedoff M., Loye A. and Mathys N. (2015): Erosion processes in black marl soils at the millimetre scale: preliminary insights from an analogous model. *Hydrol. Earth Syst. Sci.*, 19, 1849–1855, doi:10.5194/hess-19-1-2015.
 35. Michoud C., Carrea D., Costa S., Derron M.-H., Jaboyedoff M., Davindson R., Delacourt C., Letortu P. and Maquaire O. (2015): Landslides Detection and Monitoring Capability of Boat-based Mobile Laser Scanning along Dieppe Coastal Cliffs, Normandy. *Landslides*, 12, 403-418. DOI 10.1007/s10346-014-0542-5
 36. Kropat G., Bochud F., Jaboyedoff M., Laedermann J.-P., Murith C., Palacios M., Baechler S. (2015) Predictive analysis and mapping of indoor radon concentrations in a complex environment using kernel estimation: an application

to Switzerland. *Science of the Total Environment*, 505: 137–148.

2014

37. Royán M.-J., Abellán A., Jaboyedoff M., Vilaplana J.-M. and Calvet J. (2014): Spatio-temporal analysis of rockfall pre-failure deformation using terrestrial lidar. *Landslides*: 11, 697-709.
38. Tonini M., Pedrazzini A., Penna I., Jaboyedoff M. (2014): Spatial pattern of landslides in Swiss Rhone Valley. *Natural Hazards*. 73(1), 97-110.
39. Riquelme A. J., Abellán A., Tomás R. and Jaboyedoff M. (2014): A new approach for semi-automatic rock mass joints recognition from 3D point clouds. *Computers & Geosciences*: 68, 38–52.
40. Michelletti N. Foresti L., Robert S., Leuenberger M., Pedrazzini A., Jaboyedoff M. and Kanevski M. (2014): A study of feature selection methods of machine learning for landslide susceptibility mapping. *Mathematical Geosciences*: 46, 33-57.
41. Abellan A., Oppikofer T., Jaboyedoff M., Rosser N.J., Lim M., Lato M. (2014): Review of terrestrial laser scanning of rock slopes. *Earth Surface Processes and Landforms*: 39, 80-97.
42. Kropat G., Bochud F., Jaboyedoff M., Laedermann J.-P., Murith C., Palacios M. and Baechler S. (2014): Major influencing factors of indoor radon concentrations in Switzerland. *J. Environmental Radioactivity* 129: 7-22.

2013

43. Voumard J., Caspar O., Derron M.-H., and Jaboyedoff M. (2013): Dynamic risk simulation to assess natural hazards risk along roads. *Nat. Hazards Earth Syst. Sci.*, 13, 2763-2777.
44. Nicolet P., Foresti L., Caspar O., and Jaboyedoff M. (2013): Shallow landslides stochastic risk modelling based on the precipitation event of August 2005 in Switzerland: results and implications. *Nat. Hazards Earth Syst. Sci.*, 13, 3169-3184.
45. Michoud C., Bazin S., Blikra L.H., Derron M.-H. and Jaboyedoff M. (2013): Experiences from site-specific landslide early warning systems. *Nat. Hazards Earth Syst. Sci.*, 13, 2659-2673.
46. Jaboyedoff M., Penna I., Pedrazzini A., Baroň I.; Crosta G.B. (2013): An introductory review on gravitational-deformation induced structures, fabrics and modeling. *Tectonophysics*, 605, 1-12.
47. Humair F. Pedrazzini A. Epard E., Froese C. and Jaboyedoff M. (2013): Structural characterization of Turtle Mountain anticline (Alberta, Canada) and impact on rock slope failure. *Tectonophysics*, 605, 133-148.

48. Pedrazzini A., Jaboyedoff M., Loye A. and Derron M.-H. (2013): From deep seated slope deformation to rock avalanche: Destabilization and transportation models of the Sierre landslide (Switzerland). *Tectonophysics*, 605, 149-168.
49. Sudmeier-Rieux, K, Jaquet, S, Jaboyedoff, M. (2013): Operationalizing 'resilience' for disaster risk reduction in mountainous Nepal. *Disaster Prevention and Management*, 22, 366 – 377.
50. Horton P., Jaboyedoff M., Rudaz B. and Zimmermann M. (2013): Flow-R, a model for susceptibility mapping of debris flows and other gravitational hazards at a regional scale. *Nat. Hazards Earth Syst. Sci.*, 13, 869-885.
51. Travelletti J., Malet J.-P., Samyn K., Grandjean G. and Jaboyedoff M. (2013): Control of landslide retrogression by discontinuities: evidences by the integration of airborne- and ground-based geophysical information. *Landslides*, 10 (1), 37-54.
52. Penna I.M., Derron M.-H.1, Jaboyedoff M., Hungr O. (2013): Hazard assessment for natural dam formation and failure along the Santa Cruz river (southern San Juan province, Argentina). *Geomorphology*, 186, 28–38.
53. Böhme M., Hermanns R.L, Oppikofer T., Fischer L., Eiken T., Bunkholt H.S.S., Pedrazzini A., Derron M.-H., Jaboyedoff M., Blikra L.H., Nilsen B. (2013): Analyzing complex rock slope deformation at Stampa, western Norway, by integrating geomorphology, kinematics and numerical modeling. *Eng. Geol.*, 154, 116–130.

2012

54. Loye A., Pedrazzini, Theules J., Jaboyedoff M., Liébault F., & Metzger R. (2012): Influence of bedrock structures on the spatial pattern of erosional landforms in small alpine catchments. *ESPL*, 37, 1407-1423.
55. Theule J. I., Liébault F., Loye A., Laigle D., and Jaboyedoff M. (2012): Sediment budget monitoring of debris-flow and bedload transport in the Manival Torrent, SE France. *Nat. Hazards Earth Syst. Sci.*, 12, 731–749.
56. Horton P., Jaboyedoff M., Metzger R., Oblet C. and Marty R. (2012): Spatial relationship between the atmospheric circulation and the precipitation measured in the western Swiss Alps by means of the analogue method. *Nat. Hazards Earth Syst. Sci.*, 12, 777–784.
57. Pedrazzini A., Froese C.R., Jaboyedoff M., Hungr O., Humair F. (2012): Combining digital elevation model analysis and run-out modeling to characterize hazard posed by a potentially unstable rock slope at Turtle Mountain, Alberta, Canada. *Engineering Geology* 128 , 76–94.
58. Mainsant G., Larose E., Brönnimann C., Jongmans D., Michoud C., Jaboyedoff M.

- (2012): Ambient seismic noise monitoring of a clay landslide: toward failure prediction. *JGR-ES*, 117, F01030, 12 PP. doi:10.1029/2011JF002159
59. Bois T., Bouissou S. and Jaboyedoff M. (2012) : Influence of structural heterogeneities and of large scale topography on imbricate gravitational rock slope failures: New insights from 3-D physical modelling and geomorphological analysis. *Tectonophysics*, v 526–529, p. 147-156, doi: 10.1016/j.tecto.2011.08.001.
60. Brideau M.-A., Sturzenegger M., Stead D., Jaboyedoff M., Lawrence M., Roberts N., Ward B., Millard T., Clague, J. (2012). Stability analysis of the 2007 Chehalis lake landslide using discontinuity data obtained from long-range photogrammetry and airborne-lidar digital elevation models. *Landslides*, 9:75–91.
61. Michoud C., Derron M.-H., Horton P., Jaboyedoff M., Baillifard F.-J., Loye A., Nicolet P., Pedrazzini A., Queyrel A. (2012): Rockfall hazard and risk assessments along roads at a regional scale: example in Swiss Alps. *Nat. Hazards Earth Syst. Sci.*, 12, 615-629.
62. Lévy S., Jaboyedoff M., Locat J., Demers D. (2012) Erosion and channel change as factors of landslides and valley formation in Champlain Sea Clays: The Chacoura River, Quebec, Canada.. *Geomorphology*. 145-146, 12–18. doi:10.1016/j.geomorph.2011.09.014.
63. Sudmeier-Rieux K., Jaquet S., Derron M.-H., Jaboyedoff M., Devkota S. (2012): A Case Study of Landslides and Coping Strategies in Two Villages of Central-Eastern Nepal. *Applied Geography*. 32, 680-690.
64. Jaboyedoff, M., Oppikofer, T., Abellán, A., Derron, M.-H., Loye, A., Metzger, R., Pedrazzini, A. (2012): Use of LIDAR in landslide investigations: a review. *Natural Hazards*, 61:5–28, DOI 10.1007/s11069-010-9634-2.

2011

65. Volkwein A., Schellenberg K., Labiouse V., Agliardi F., Berger F., Bourrier F., Dorren L. K. A., Gerber W., and Jaboyedoff M. (2011): Rockfall characterisation and structural protection – a review *Nat. Hazards Earth Syst. Sci.*, 11, 2617-2651, 2011. doi:10.5194/nhess-11-2617-2011.
66. Brideau, M.-A., Pedrazzini, A., Stead, D., Froese, C., Jaboyedoff, M. and van Zeyl, D. (2011): Three-dimensional slope stability analysis of South Peak, Crownsnest Pass, Alberta, Canada. *Landslides*, 8(2): 139-158.
67. Sudmeier-Rieux K., Jaboyedoff M., Breguet A., and Dubois J. (2011): The 2005 Pakistan Earthquake Revisited: Methods for Integrated Landslide Assessment. *Mountain Research and Development* 31:112-121. doi: 10.1659/MRD-JOURNAL-D-10-00110.1

68. Oppikofer T., Jaboyedoff M., Pedrazzini A., Derron M.-H. and Blikra L. (2011) Detailed DEM analysis of a rockslide scar to characterize the basal sliding surface of active rockslides. *JGR Surface*. doi:10.1029/2010JF001807.
69. Jaboyedoff, M. and Labiouse V. (2011) Technical Note: Preliminary estimation of rockfall runout zones *Nat. Hazards Earth Syst. Sci.*, 11, 819-828.
70. Kappes, M.; Malet J.-P., Remaître A., Horton P., Jaboyedoff M. (2011) Assessment of debris flow susceptibility at medium-scale in the Ubaye valley, France. *Nat. Hazards Earth Syst. Sci.*, 11, 627–641.

2010

71. Blahut J., Sterlacchini S., Horton P., and Jaboyedoff M. (2010): Debris flow hazard modelling on medium scale: Valtellina di Tirano, Italy. *NHESS*, 10, 2379–2390.
72. Wick E., Baumann V., and Jaboyedoff M. (2010): Brief Communication: Report on the impact of the 27 February 2010 earthquake (Chile, Mw 8.8) on rockfalls in the Las Cuevas valley, Argentina. *NHESS*. 1989–1993.
73. Derron M.-H. and Jaboyedoff M. (2010): LIDAR and DEM techniques for landslides monitoring and characterization. *Nat. Hazards Earth Syst. Sci.*, 10, 1877-1879.
74. Oppikofer T., Jaboyedoff M., Demers D., Locat J., Locat A., Locat P. Robitaille D., and Turmel D. 2010. Reply to Discussion: Use of terrestrial laser scanning for the characterization of retrogressive landslides in sensitive clay and rotational landslides in river banks. *CGJ* 46(12) 1379-1390.
75. Burki, V. Hansen, L., Fredin, O., Andersen, T., Beylich, A., Jaboyedoff, M., Larsen, E., Tønnesen, J.-F. (2010): Little Ice Age advance and retreat sediment budgets for an outlet glacier in western Norway. *Boreas*, 39, 551-566.
76. Viero A., Teza T., Massironi M., Jaboyedoff M., Galgaro A. (2010): Laser scanning-based recognition of rotational movements on a deep seated gravitational instability: The Cinque Torri case (North-Eastern Italian Alps). *Geomorphology*, 122, 191-204.
77. Superchi L., Floris M., Ghirotti M., Genevois R., Jaboyedoff M., Stead D. (2010): Implementation of a geodatabase of published and unpublished data on the catastrophic Vaiont landslide. *NHESS*. 10, 865-873.
78. Travelletti, J., Demand, J. Jaboyedoff, M. and Marillier, M. (2010): Mass movement characterization using a reflexion and refraction seismic survey with the sloping local base level concept. *Geomorphology*, 116, 1-10.

2009

79. Jaboyedoff, M., Oppikofer, T., Locat, A., Locat, J., Turmel, D., Robitaille, D.,

Demers, D. and Locat, P. (2009): Use of ground-based Lidar for the analysis of retrogressive landslides in sensitive clay and of rotational landslides in river banks. *Canadian Geotechnical Journal*. 46, 1-12.

80. Otto J.-Ch., Schrott L., Dikau R. and Jaboyedoff M. (2009): Quantifying sediment storage in a high Alpine valley (Turtmanntal, Switzerland). *Earth Surface Processes and Landforms*, 34, 1726-1742.

81. Loye A., Jaboyedoff M., and Pedrazzini, A. (2009): Identification of potential rockfall source areas at a regional scale using a DEM-based geomorphometric analysis. *NHESS*, 9, 1643-1653.

82. Oppikofer, T., Jaboyedoff, M., Blikra, L. & Derron, M. (2009): Characterization and monitoring of the Åknes rockslide using terrestrial laser scanning. *NHESS*, 9, 10003-1019.

83. Abellán, A., M. Jaboyedoff, T. Oppikofer, J.M. Vilaplana (2009): Detection of millimetric deformation using a terrestrial laser scanner: Experiment and application to a rockfall event. *NHESS*, 9, 365-372.

84. Froese C.R., Moreno F., Jaboyedoff, M. Cruden D.M. (2009): 25 Years of Movement Monitoring on the South Peak of Turtle Mountain: Understanding the Hazard. *Can. Geotech. J.*, 46: 256-269.

85. Jaboyedoff, M., Couture, R. and Locat, P. (2009): Structural analysis of Turtle Mountain (Alberta) using digital elevation model: toward a progressive failure. *Geomorphology*. 103: 5-16.

2008

86. Oppikofer, T., Jaboyedoff, M. and Keusen, H.-R. (2008): Collapse of the eastern Eiger flank in the Swiss Alps. *Nature Geosciences*, 1, 531-535.

2007

87. Sturzenegger, M., Sartori M., Jaboyedoff M. and Stead, D. (2007): Regional deterministic characterization of fracture networks and its application to GIS-based rock fall risk assessment. *Engineering Geology* 94, 201-214.

2006

88. Locat, P. Couture, R., Locat, J., Leroueil, S. and Jaboyedoff, M. (2006): Fragmentation energy in rock avalanches. *Can. J. Geotech.* 43, 830-851.

2005

89. Jaboyedoff M. and Derron M.-H., (2005): A new method to estimate the infilling of alluvial sediment of glacial valleys using a sloping local base level. *Geografia Fisica e Dinamica Quaternaria*, 28, 37-46.

90. Jaboyedoff, M., Dudd, J. P. and Labiouse, V. (2005): An attempt to refine rockfall

hazard zoning based on the kinetic energy, frequency and fragmentation degree. *Natural Hazards and Earth System Science*, 5, 621-632.

91. Derron, M.-H, Blikra, L. and Jaboyedoff, M. (2005): Preliminary Assessment of Landslide and Rockfall Hazards using a DEM (Oppstadhornet, Norway). *NHESS*, 5, 285–292.
92. Jaboyedoff, M., Derron, M.-H. and Manby, G.M. (2005): Seismic Hazard Assessment using Gradient of Uplift Velocities on the Turan Block (Central Asia). *NHESS*, 5, 43 - 47.

2004

93. Jaboyedoff, M., Baillifard F., Bardou, E., and Girod, F. (2004): Weathering, cycles of saturation-unsaturation, and strain effects as principal processes for rock mass destabilization. *Quarterly Journal of Engineering Geology and Hydrogeology*. 37, 95-103.
94. Jaboyedoff, M., Ornstein P. and Rouiller J.-D. (2004): Note on the design of a geodetic database and associated tools for monitoring slope movements: The example of Randa rockfall scar. *NHESS*. Vol 4: 187 - 196.
95. Jaboyedoff, M., Baillifard, F., Philipposian, F. & Rouiller, J.-D. (2004): Assessing the fracture occurrence using the weighted fracturing density: a step towards estimating rock instability hazard. *NHESS*. Vol 4, 83-93.

2003

96. Baillifard, F., Jaboyedoff, M. & Sartori, M. (2003): Rockfall hazard mapping along a mountainous road in Switzerland using an empirical approach. *Natural Hazards and Earth System Sciences*. 3, 435-442.
97. Sartori, M., Baillifard, F., Jaboyedoff, M. & Rouiller, J.-D.(2003): Kinematics of the 1991 Randa rockfalls (Canton of Valais, Switzerland). *Natural Hazards and Earth System Sciences*. 3, 423-433.
98. Jaboyedoff, M., Pastorelli, S. (2003): Perturbation of the heat flow by water circulation in a mountainous framework. Examples from the Swiss Alps. *Eclgae Helv.*, 96, 37-47.

2002

99. Jaboyedoff, M. and Thélin, P. (2002): PATISSIER: software to estimate the smectite content and number of consecutive illite layers in mixed-layer illite-smectite using illite crystallinity data. *Bull. Suisse Miner. Petrogr.*, 82, 221-228.

2001

100. Jaboyedoff, M., Bussy, F., Kubler, B., Thélin, P. (2001): Illite crystallinity

revisited. *Clays and Clay Minerals*. 49, 156-167.

2000

101. Kubler, B., Jaboyedoff, M. (2000): Illite Crystallinity, C.R. Acad. Sci. Paris, serie IIA, 331, 75-89.
102. Jaboyedoff, M., Kubler, B., Sartori, M., Th  lin, P. (2000): Basis for meaningful illite crystallinity measurements: an example from the Swiss Prealps, *Bull. Suisse Miner. Petrogr*, 80, 75-83.

1999

103. Jaboyedoff, M., Kubler, B., Th  lin, P., (1999): An empirical Scherrer equation for weakly swelling mixed-layer minerals, especially illite-smectite. *Clay Minerals*. 34, 601-617.
104. Jaboyedoff, M. & Cosca, M. A. (1999): Dating incipient metamorphism using $40\text{Ar}/39\text{Ar}$ geochronology and XRD modeling: a case study from the Swiss Alps. *Contrib. Mineral. Petrol.* 135, 93-113.

1996

105. Jaboyedoff, M. & Th  lin, P. (1996): New data on low metamorphism in Brian  onnais domain of Prealps, Western Switzerland. *Eur. J. of Mineral.*, 8, 577-592.

Articles in edited books

2016

1. Sudmeier-Rieux, K., Gaillard, JC., Fernandez, M., Guadagno L. and Jaboyedoff, M. (2016): Introduction: Exploring Linkages Between Disaster Risk Reduction, Climate Change Adaptation, Migration and Sustainable Development. In: Sudmeier-Rieux, K., Jaboyedoff, M., Fernandez, M., Penna, I. and Gaillard, JC. (Eds.). *Identifying emerging issues in Disaster Risk Reduction, Migration, Climate change and Sustainable development. Shaping debates and policies*, Springer. 1-11.
2. Schwilch G, Adhikari A., Jaboyedoff M., Jaquet S., Kaenzig R., Liniger H.-P., Penna I. M., Sudmeier-Rieux K., and Upreti B.R. (2016): Impacts of Outmigration on Land Management in a Nepali Mountain Area. In: Sudmeier-Rieux, K., Jaboyedoff, M., Fernandez, M., Penna, I. and Gaillard, JC. (Eds.). *Identifying emerging issues in Disaster Risk Reduction, Migration, Climate change and Sustainable development. Shaping debates and policies*, Springer. 177-194.
3. Sudmeier-Rieux, K., Gaillard, JC., Fernandez, M., Jaboyedoff, M. and Penna I. (2016): Conclusions: Linking Sustainable Development, Disaster Risk Reduction,

Climate Change Adaptation, and Migration—Policy Implications and Outlook. In: Sudmeier-Rieux, K., Jaboyedoff, M., Fernandez, M., Penna, I. and Gaillard, J.C. (Eds.). Identifying emerging issues in Disaster Risk Reduction, Migration, Climate change and Sustainable development. Shaping debates and policies, Springer. 267-275.

4. Jaboyedoff M., Michoud M. , Derron M.-H., Voumard J., Leibundgut G. & Sudmeier-Rieux K., Nadim F. and Leroi E. (2016): Human-induced landslides: toward the analysis of anthropogenic changes of the slope environment. In: Avresa S., Cascini L., Picarelli L. and Scavia C.: Landslides and Engineering Slopes – Experiences, Theory and practices. CRC Press: 217-232.
5. Oppikofer T., Hermanns R.L., Sandøy G., Böhme M., Jaboyedoff M., Horton P., Roberts N.J. & Fuchs H. (2016): Quantification of casualties from potential rock-slope failures in Norway. In: Avresa S., Cascini L., Picarelli L. and Scavia C.: Landslides and Engineering Slopes – Experiences, Theory and practices. CRC Press: 1537-1544.
6. Penna I., Hermanns R. L., Jaboyedoff M. & Fauqué L. (2016): Large Scale Rockslides in the Argentinean Andes. Distribution and forcing factors. In: Avresa S., Cascini L., Picarelli L. and Scavia C.: Landslides and Engineering Slopes – Experiences, Theory and practices. CRC Press: 1599-1603.
7. Voumard J., Derron M.-H., Jaboyedoff M. & Andres N. (2016): Minor landslides and floods events affecting transportation network in Switzerland, preliminary results. In: Avresa S., Cascini L., Picarelli L. and Scavia C.: Landslides and Engineering Slopes - Experiences, Theory and practices. CRC Press: 2023-2228.
8. Manzella I., Penna I., Kelfoun K. & Jaboyedoff M. (2016): High-mobility of unconstrained rock avalanches: numerical simulations of a laboratory experiment and an Argentinian event. In: Avresa S., Cascini L., Picarelli L. and Scavia C.: Landslides and Engineering Slopes – Experiences, Theory and practices. CRC Press: 1345-1352.

2014

9. Quan Luna, B., Blahut, J., Kappes, M., Oguzhan Akbas S., Malet J.-P., Van Asch T. and Jaboyedoff M. (2014): Methods for Debris Flow Hazard and Risk Assessment. In: VanAsch, T; Corominas, J; Greiving, S; Malet J.-P. and Sterlachini S. (Eds.): Mountain risks: from prediction to management and governance. Series: Advances in Natural and Technological Hazards Research. V. 34, Springer-Verlag, 133-177.
10. Abellán A., Michoud C., Jaboyedoff M., Baillifard F., Demierre J., Carrea, D. and

- Derron M.-H. (2014): Velocity Prediction on Time-Variant Landslides Using Moving Response Functions: Application 5 to La Barmasse Rockslide (Valais, Switzerland). In: G. Lollino et al. (eds.), *Engineering Geology for Society and Territory – Vol. 2*, Springer, DOI: 10.1007/978-3-319-09057-3_49, 323-327.
11. Carrea D, Abellán A., Derron M.-H., and Jaboyedoff M. (2014): Automatic Rockfalls Volume Estimation Based on Terrestrial Laser Scanning Data. In: G. Lollino et al. (eds.), *Engineering Geology for Society and Territory – Vol. 2*, Springer, DOI: 10.1007/978-3-319-09057-3_68, 325-328.
 12. D'Amato J., Guérin A., Hantz D., Rossetti J.-P., Jaboyedoff M. (2014): Investigating rock fall frequency and failure configurations using Terrestrial Laser Scanner. In: G. Lollino et al. (eds.), *Engineering Geology for Society and Territory – Vol. 2*, Springer. DOI: 10.1007/978-3-319-09057-3_340, 1919 – 1923.
 13. Humair F., Epard J.-L., Derron M.-H., Jaboyedoff M., Pana D., Froese C., and Pedrazzini A. (2014): Inventory of Rock Slope Deformations Affecting Folded Sedimentary Layers in Moderate Relief Context: The Case of the Livingstone Range Anticlinorium, AB, Canada. In: G. Lollino et al. (eds.), *Engineering Geology for Society and Territory – Vol. 2*, Springer, DOI: 10.1007/978-3-319-09057-3_99, 599-603.
 14. Jaboyedoff M. and Derron M.-D. (2014): Methods to Estimate the Surfaces Geometry and Uncertainty of Landslide Failure Surface. In: G. Lollino et al. (eds.), *Engineering Geology for Society and Territory – Vol. 2*, Springer, DOI: 10.1007/978-3-319-09057-3_52, 339-343.
 15. Jongmans D., Baillet L., Larose E., Bottelin P., Mainsant G., Chambon G, Jaboyedoff M. (2014): Application of ambient vibration techniques for monitoring the triggering of rapid landslides. In: G. Lollino et al. (eds.), *Engineering Geology for Society and Territory – Vol. 2*, Springer. DOI: 10.1007/978-3-319-09057-3_57, 371-374.
 16. Matasci B., Jaboyedoff M., Ravanel L., Deline P. (2014): Stability assessment, potential collapses and future evolution of the West face of the Drus (3754 m a.s.l., Mont Blanc massif). In: G. Lollino et al. (eds.), *Engineering Geology for Society and Territory – Vol. 2*, Springer, DOI: 10.1007/978-3-319-09057-3_134, 791-796.
 17. Michoud C., Baumann V., Derron M.-H., Jaboyedoff M. , and Lauknes T. R. (2014): Slope Instability Detection Along the National 7 and the Potrerillos Dam Reservoir, Argentina, Using the Small-Baseline InSAR Technique. In: G. Lollino et al. (eds.), *Engineering Geology for Society and Territory – Vol. 2*, Springer, DOI: 10.1007/978-3-319-09057-3_44, 295-299.

18. Nicolet P., Jaboyedoff P., and Lévy S. (2014): A Simple Method to Include Uncertainties Cost-Benefit Analyses. . In: G. Lollino et al. (eds.), Engineering Geology for Society and Territory – Vol. 2, Springer, DOI: 10.1007/978-3-319-09057-3_312, 1763-1766.

2013

19. Sudmeier-Rieux K, Jaquet, Basyal S., GK., Derron M-H, Devkota S., Jaboyedoff M., and Shrestha S. (2013): A Neglected Disaster: Landslides and Livelihoods in Central-Eastern Nepal. C. Margottini et al. (eds.), Springer-Verlag Berlin Heidelberg, Landslide Science and Practice, Vol. 4, 169-176.
20. Franz M., Podladchikov Y., Jaboyedoff M., Derron M-H. (2013): Landslide-triggered tsunami modelling in Alpine lakes. Int. Conf Vajont 1963-2013. Italian Journal of Engineering Geology and Environment - Book Series (6), 245-254. DOI: 10.4408/IJEGE.2013-06.B.
21. Bonnard C., Jaboyedoff M. et Gischig V. (2013): Comprendre l'éboulement de Randa, Suisse: perspectives et limites des modélisations hydro- et thermo-géomécaniques en milieu rocheux. Duffaut P. (Ed.) : Manuel de mécanique des roches : Tome IV. Presse des mines. Editions Presses des Mines – Transvalor. p.126-149.
22. Jaquet, S, Sudmeier-Rieux, K, Derron, M-H, Jaboyedoff, M. (2013): Forest cover and landslide trends: A case study from Dolakha District in central-eastern Nepal, 1992-2009. In: Renaud, F, Sudmeier-Rieux, K, Estrella, M (eds.) Ecosystems and Disaster Risk Reduction, From Policy to Practice. Bonn:U.N. University Press. 343-367.
23. Jaboyedoff M., Horton P., Derron M.-H., Longchamp C. and Michoud C. (2013): Monitoring natural hazards. In: Bobrowsky P. (Ed.) Encyclopedia of Natural Hazards. Springer. 686-694.
24. Worni R., Huggel C., Dorren L.K.A., and Jaboyedoff M. (2013): Numerical Modeling of Flows and Falls. In: John F. Shroder (ed.) Treatise on Geomorphology, Volume 7, pp. 273-283. San Diego: Academic Press.
25. Hermanns R.L., Oppikofer T., Anda E., Blikra L.H., Böhme M., Bunkholt H., Crosta G.B., Dahle H., Devoli G., Fischer L., Jaboyedoff M., Loews. S., Sætre S., Yugsi Molina F.X. (2013): hazard and risk classification for large unstable rock slopes in Norway. Int. Conf Vajont 1963-2013. Italian Journal of Engineering Geology and Environment - Book Series (6), 245-254. DOI: 10.4408/IJEGE.2013-06.B.

2012

26. Froese C., Charrière M., Humaire F., Jaboyedoff M. and Pedrazzini A. (2012): Characterization and management of rockslide hazard at Turtle Mountain, Alberta, Canada. In: *Landslides: Types, Mechanisms and Modeling* (Eds.) Clague J.J. and Stead D. Cambridge University Press.
27. Jaboyedoff M, Derron M.-H., Jakubowski, J., Oppikofer, T. and Pedrazzini, A. (2012): The 2006 Eiger rockslide, European Alps. In D. Stead J. Clague (Eds.): *Landslides Types, Mechanisms and Modeling* Cambridge University Press, 282-296.
28. Sudmeier-Rieux, K, Gaillard, JC, Sharma S., Dubois, J., Jaboyedoff, M. (2012): Floods, Landslides, and Adapting to Climate Change in Nepal: What Role for Climate Change Models? In: A. Lamadrid, I. Kelman (Eds.): *Climate Change Modeling For Local Adaptation In The Hindu Kush-Himalayan Region*. Vol. 11. Emerald Books, 119 – 140.
29. Jaboyedoff M, Derron M.-H., Pedrazzini A., Blikra L., Crosta G. B., Froese C., Hermanns R., Oppikofer T., Stead D. (2012): Fast assessment of susceptibility of massive rock instabilities. In Eberhardt E. et al. (Eds): *Landslides and Engineered Slopes. Protecting Society through Improved Understanding. Proceedings of the 11th International and 2nd North American Symposium on Landslides (Banff, Canada, 3-8 June 2012)* CRC press, 459-465.
30. Stead D., Jaboyedoff M. & Coggan J. S. (2012): Rock slope characterization and geomechanical modelling. . In Eberhardt E. et al. (Eds): *Landslides and Engineered Slopes. Protecting Society through Improved Understanding. Proceedings of the 11th International and 2nd North American Symposium on Landslides (Banff, Canada, 3-8 June 2012)* CRC press, 83-100.
31. Fischer L., Rubensdotter L., Sletten K., Stalsberg K., Melchiorre C., Horton P. & M. Jaboyedoff (2012): Debris flow modeling for susceptibility mapping at regional to national scale in Norway. In Eberhardt E. et al. (Eds): *Landslides and Engineered Slopes. Protecting Society through Improved Understanding. Proceedings of the 11th International and 2nd North American Symposium on Landslides (Banff, Canada, 3-8 June 2012)*. CRC press, 723-729.
32. Oppikofer T., Bunkholt H., Fischer L., Saintot A., Hermanns R.L., Carrea D., Longchamp C., Derron M.-H., Michoud C., Jaboyedoff M. (2012): Investigation and monitoring of rock slope instabilities in Norway by terrestrial laser scanning. In Eberhardt E. et al. (Eds): *Landslides and Engineered Slopes. Protecting Society through Improved Understanding. Proceedings of the 11th International and 2nd North American Symposium on Landslides (Banff, Canada, 3-8 June 2012)* CRC

press, 1235-1241.

33. Böhme M., Hermanns R.L., Fischer L., T. Oppikofer T., Bunkholt H.S.S., Derron M.-H., Carrea D., Jaboyedoff M., Eiken T. (2012): A detailed assessment of the deep seated gravitational deformation at Stampa above Flåm, Norway. In Eberhardt E. et al. (Eds): *Landslides and Engineered Slopes. Protecting Society through Improved Understanding. Proceedings of the 11th International and 2nd North American Symposium on Landslides (Banff, Canada, 3-8 June 2012)* CRC press, 647-652.
34. Carrea D., Abellán A., Derron M.-H., Gauvin N. & Jaboyedoff M. (2012): Using 3D surface datasets to understand landslide evolution: from analogue models to real case study. In Eberhardt E. et al. (Eds): *Landslides and Engineered Slopes. Protecting Society through Improved Understanding. Proceedings of the 11th International and 2nd North American Symposium on Landslides (Banff, Canada, 3-8 June 2012)* CRC press, 575-579.
35. Brideau M.-A., Massey C.I., Archibald G. & Jaboyedoff M. (2012): Terrestrial photogrammetry and LiDAR investigation of the cliffs associated with the seismically triggered rockfalls during the February and June 2011 Christchurch earthquakes. In Eberhardt E. et al. (Eds): *Landslides and Engineered Slopes. Protecting Society through Improved Understanding. Proceedings of the 11th International and 2nd North American Symposium on Landslides (Banff, Canada, 3-8 June 2012)* CRC press, 1179-1185.
36. Derron M.-H. & Jaboyedoff M. (2012): What if atmospheric CO₂ concentration doubles ? A chemical perspective on rock weathering and weakening. In Eberhardt E. et al. (Eds): *Landslides and Engineered Slopes. Protecting Society through Improved Understanding. Proceedings of the 11th International and 2nd North American Symposium on Landslides (Banff, Canada, 3-8 June 2012)* CRC press, 379-385.
37. Humair F., Jaboyedoff M., Pedrazzini A. & Epard J-L. (2012) techniques to characterize Turtle Mountain unstable system. . In Eberhardt E. et al. (Eds): *Landslides and Engineered Slopes. Protecting Society through Improved Understanding. Proceedings of the 11th International and 2nd North American Symposium on Landslides (Banff, Canada, 3-8 June 2012)* CRC press, 1257-1263.
38. Stock, G.M. Luco, N. Harp E.L., Collins B.D., Reichenbach P., Frankel K., Matasci B., Carrea D., Jaboyedoff M., Oppikofer T. (2012): Quantitative rock fall hazard and risk assessment in Yosemite Valley, California, USA. In Eberhardt E. et al. (Eds): *Landslides and Engineered Slopes. Protecting Society through Improved*

- Understanding. Proceedings of the 11th International and 2nd North American Symposium on Landslides (Banff, Canada, 3-8 June 2012) CRC press, 1119-1125.
39. Cloutier C., Locat J., Lord P-E., Couture R., Jaboyedoff M. (2012): Kinematic considerations of the Gascons rockslide, Québec (Gaspésie), Canada. In Eberhardt E. et al. (Eds): Landslides and Engineered Slopes. Protecting Society through Improved Understanding. Proceedings of the 11th International and 2nd North American Symposium on Landslides (Banff, Canada, 3-8 June 2012) CRC press, 1119-1125.
40. Jaboyedoff M., Choffet Ch., Derron M.-H., Horton P., Loye A., Longchamp C., Mazotti B., Michoud C. and Pedrazzini A. (2012): Preliminary Slope Mass Movements Susceptibility Mapping Using DEM and LiDAR DEM. In B. Pradhan and M. Buchroithner (eds.), *Terrigenous Mass Movements*, DOI: 10.1007/978-3-642-25495-6_5, Springer-Verlag Berlin Heidelberg 2012. 109-170.
41. Sudmeier-Rieux K., Gaillard J-C., Sharma S., Dubois J. and Jaboyedoff M. (2012): Floods, landslides and adapting to climate change in Nepal: What role for climate change models?. *Emerald Books Volume on "Climate Change Modeling for Local Adaptation in the Hindu Kush-Himalayan Region"* Edited by Armando Lamadrid and Ilan Kelman. Emerald Group Publishing Limited, 119-140.
42. Froese C., Jaboyedoff M., Charrière M., Humair F., Jaboyedoff M. and Pedrazzini A. (submitted): Characterization and management of rockslide hazard at Turtle Mountain, Alberta, Canada. In D. Stead J. Clague (Eds.): *Landslides Types, Mechanisms and Modeling* Cambridge University Press, 310-322.

2011

43. Derron M.-H., Jaboyedoff M., Pedrazzini A., Michoud C. and Villemin T. (2011): Remote sensing and monitoring techniques for the characterization of rock mass deformation and change detection. In: Lambert and Nicot: *Rockfall Engineering*, ISTE-Wiley, 39-65.
44. Horton P., Jaboyedoff M., Zimmermann M., Mazotti B. & Longchamp C. (2011): Flow-r, a model for debris flow susceptibility mapping at a regional scale – some case studies. In: Genevois R., Hamilton, D.L. and Prestininzi, A.: *Debris-Flow Hazards Mitigation, Mechanics, Prediction and Assessment*, 5th DFHM Int. Conf. Padova. It. J. of Eng. Geol Env. – Book, Casa Editrice Università La Sapienza. 875- 884.
45. Lari S., Crosta G.B., Frattini P., Horton P. & Jaboyedoff M. (2011): Regional-scale debris-flow risk assessment for an Alpine valley. In: Genevois R., Hamilton, D.L. and Prestininzi, A.: *Debris-Flow Hazards Mitigation, Mechanics, Prediction and*

Assessment, 5th DFHM Int. Conf. Padova. It. J. of Eng. Geol Env. – Book, Casa Editrice Università La Sapienza. 933-940

46. Loyer A., Jaboyedoff M., Pedrazzini A., Theule J., Liébault F. & Metzger R. (2011): Morphostructural analysis of an alpine debris flows catchment: implication for debris supply. In: Genevois R., Hamilton, D.L. and Prestininzi, A.: Debris-Flow Hazards Mitigation, Mechanics, Prediction and Assessment, 5th DFHM Int. Conf. Padova. It. J. of Eng. Geol Env. – Book, Casa Editrice Università La Sapienza. 115-126.
47. Theule J., Liébault F., Loyer A., Laigle D. & Jaboyedoff M. (2011): Sediment budget monitoring of a debris-flow torrent (French Prealps). In: Genevois R., Hamilton, D.L. and Prestininzi, A.: Debris-Flow Hazards Mitigation, Mechanics, Prediction and Assessment, 5th DFHM Int. Conf. Padova. It. J. of Eng. Geol Env. – Book, Casa Editrice Università La Sapienza. 779-786.
48. Jaboyedoff, M., Crosta, G. B. & Stead, D. (2011): Slope tectonics: a short introduction. . In: Jaboyedoff, M. (Ed): Slope tectonics. Geological Society Special Publication, 1-10.
49. Jaboyedoff M., Oppikofer T., Derron M.-H., Böhme M., Blikra L., Sintot S. (2011): Complex landslide behaviour and structural controlled by the structures: the a 3D conceptual model example of Åknes rockslide, Norway. In: Jaboyedoff, M. (Ed): Slope tectonics. Geological Society Special Publication, 147-162.
50. Pedrazzini, A. , Jaboyedoff, M., Froese, C., Langenberg, W., Moreno F. (2011), Structural analysis of Turtle Mountain; origin and influence of fractures in the development of rock slope failures. In: Jaboyedoff, M. (Ed): Slope tectonics. Geological Society Special Publication, 163-184.

2010

51. Van Westen, C., Quan Luna, B., Franco, V., Malet J.-p., Jaboyedoff, M., Kappes, M. and Sterlachini S. (2010) : Development of training materials on the use of geo-information for Multi-Hazard Risk assessment in a mountainous environment. In. Malet, J.-P., Glade, T. and Casagli, N.: Mountain risks: bringing science to society. Cerg Editions, Strasbourg, 469-475.
52. Pedrazzini, A., Oppikofer, T., Jaboyedoff, M., Guell i Pons, M., Chantry, R., and Stampfli, E. (2010) : Assessment of rockslide and rockfall problems in an active quarry: Case study of the arvel quarry (western switzerland). In European Rock Mechanics Symposium (EUROCK 2010), Lausanne, Switzerland. CRC Press, Leiden, pp. 593-596.
53. Longchamp, C. , Pedrazzini, A., Jaboyedoff, M. , Dessauges, A., Louis, K.,

Buckingham, T. and Erni, C. (2010) : Structural and stability analyses of a rock cliff based on digital elevation model: The Obermatt quarry (Switzerland). In European Rock Mechanics Symposium (EUROCK 2010), Lausanne, Switzerland. CRC Press, Leiden, pp.597-600.

2009

54. Jaboyedoff M., Loya A., Oppikofer T., Pedrazzini A., Güell i Pons M. and Locat J. (2009): Earth-flow in a complex geological environment: the example of Pont Bourquin, Les Diablerets (Western Switzerland). In: Malet J.-P., Remaître A. and Bogaard T. (Eds.): Landslide processes 131-137.
55. Froese, C.R., Jaboyedoff, M., Pedrazzini, Hungr, O. and Moreno, F. (2009): Hazard mapping for the eastern face of Turtle Mountain, adjacent to the Frank Slide, Alberta, Canada. In: Malet J.-P., Remaître A. and Bogaard T. (Eds.): Landslide processes 283-289.

2008

56. Bardou E. and Jaboyedoff M. (2008): Debris Flows as a Factor of Hillslope Evolution controlled by a Continuous or a Pulse Process? In: K Gallagher, S. J. Jones and J. Wainwright: Landscape Evolution: Denudation, Climate and Tectonics over Different Time and Space Scales. Geol. Soc. London Spec. Publ., 63-78.

2007

57. Jaboyedoff M., Metzger R., Oppikofer T., Couture R., Derron M.-H., Locat J. Turmel D. (2007): New insight techniques to analyze rock-slope relief using DEM and 3D-imaging cloud points: COLTOP-3D software. In Eberhardt, E., Stead, D and Morrison T. (Eds.): Rock mechanics: Meeting Society's Challenges and demands (Vol. 1), Taylor & Francis. pp. 61-68.
58. Sturzenegger M., Stead D., Froese C., Moreno F. and Jaboyedoff M. (2007): Mapping the geological structure of Turtle Mountain, Alberta: A critical interpretation of field, DEM and LIDAR based techniques. In Eberhardt, E., Stead, D and Morrison T. (Eds.): Rock mechanics: Meeting Society's Challenges and demands (Vol. 2), Taylor & Francis. pp 925-932.

2005

59. Jaboyedoff, M., Baillifard, F., Derron, M.-H., Couture, R., Locat, J. and Locat P. (2005): Switzerland Modular and evolving rock slope hazard assessment methods. In: Senneset, K., Flaate, K. and Larsen, J.A: Landslide and avalanches, ICFL 2005. 187-194.
60. Derron, M.H., Blikra, L.H., Jaboyedoff, M. (2005): Norway High Resolution

Digital Elevation Model Analysis for Landslide Hazard Assessment (Åkerneset, Norway). In: Senneset, K., Flaate, K. and Larsen, J.A: Landslide and avalanches, ICFL 2005. 101-106.

61. Jaboyedoff, M., Baillifard, F., Couture, R., Derron, M.H., Locat, J. and Locat, P. (2005): Coupling kinematic analysis and sloping local base level criterion for large slope instabilities hazard assessment - a GIS approach. In: Hungr, O., Fell, R., Couture, R. R. and Eberhardt, E.: Landslide risk management. 615-622.
62. Jaboyedoff, M. and Derron, M.H. (2005): Integrated risk assessment process for landslides. In: Hungr, O., Fell, R., Couture, R. R. and Eberhardt, E.: Landslide risk management. On CD included in the book.

2004

63. Baillifard, F., Jaboyedoff, M., Rouiller, J.-D., Couture, R., Locat, J., Locat, P., Robichaud, G. and G., Hamel (2004): Towards a GIS-based hazard assessment along the Quebec City Promontory, Quebec, Canada. In: Lacerda, W.A., Ehrlich. M. Fontoura, A.B. and Sayao. A (eds): Landslides Evaluation and stabilization. Balkema, 207-213.
64. Jaboyedoff, M., Baillifard, F., Couture, R., Locat, J., and Locat, P. (2004): Toward preliminary hazard assessment using DEM topographic analysis and simple mechanic modelling by mean of the sloping local base level. Lacerda, W.A., Ehrlich. M. Fontoura, A.B. and Sayao. A (eds): Landslides Evaluation and stabilization. Balkema, 199-205.
65. Jaboyedoff, M., Baillifard, F., Couture, R., Locat, J., and Locat, P. (2004): New insight of geomorphology and landslide prone area detection using DEM. In: Lacerda, W.A., Ehrlich. M. Fontoura, A.B. and Sayao. A (eds): Landslides Evaluation and stabilization. Balkema, 191-197.

1993

66. Bauchau, C., Jaboyedoff, M. and Vannier, M. (1993): Claim: a new personal computer-assisted simulation model for teaching mineral exploration techniques. In: Kirkham, R.V., Sinclair, W.D., Thorpe, R.I. and Duke, J.M., eds. Mineral Deposit Modelling: Geological Assoc. of Canada, Special Paper 40, p. 685-691.

Emerging techniques and impact of human activities in landslide risk management: 3D analysis and human induced landslides

Michel Jaboyedoff

Risk-group - Institute of Earth Sciences, University of Lausanne

Nowadays landslide risk management is facing two important challenges. The first is to improve landslide predictability (hazard, early warning systems (EWS)). This is made possible thanks to the recent progresses in geosciences enabled by the new affordable technologies and computing power. The second challenge is to properly address the problem of landslides caused by the increasing impact of human on environment, especially in fast changing countries.

In landslide science, the emergence of high resolution earth surface 3D imaging has played a major role by providing new viewpoints on the slope processes. This technique has improved landslide mapping, enabling to better characterize landslide structures and also to refine numerical modelling. Furthermore, the increasing number of permanent landslide monitoring systems (MS) provide new information about failure mechanisms. These systems can include InSAR, LiDAR, GPS, pore water gauges, rain gauges, inclinometers, etc. These integrated approaches have permitted to demonstrate that most of the mountainous areas are affected by landslides or large slope deformations. As an example, several studies have shown that catastrophic landslides had signs of precursory deformation visible on hi-resolution digital elevation model (HRDEM). Coupling MS and surface deformation analysis enables to characterize the processes that lead to failure, which is fundamental to improve hazard mapping and EWS implementation. With this approach, the mechanisms of failure of several rockslides have been refined (Eiger, Aknes, Randa, Turtle Mountain, etc.), but also of small rock failures (Seychilienne, Catalonia, etc.). Moreover, non-permanent deformations are now identified as potential sources of fatigue of the rock mass. For instance, thermal effect on shallow rock failure starts to be well documented in

Yosemite. Another example is the effect of groundwater table fluctuations on a large rock wall in Norway inducing cycles of deformation of a few millimetres of amplitude (demonstrated by InSAR). Similar analyses are also applied successfully to landslides in soils such as earthflows, like Super Sauze in France. Finally, passive seismic monitoring is also a new tool to forecast the reactivation of earthflows by monitoring the decrease of the surface wave velocity.

All these new techniques are promising in order to improve landslide risk management, thanks to a better understanding of dynamic processes from landslide initiation (criterion for mapping) to failure forecast (basics for MS). But that understanding must also include the issues linked to landslides induced by human activities. This is critical considering the fast changes in land uses. In several contexts, anthropic activities are one of the major cause of landslides. Even if the causes are often bad engineering practices, several cases have demonstrated that slope failures can be caused by environmental changes that are not considered to be systematically leading to the modification of the slope profile, water circulations, etc. This means that landslide hazard assessment must clearly include the impact of past, present and future anthropic changes. Based on the work of K. Terzaghi, seven questions must be answered to tackle the potential impact of human on slope environment.

To conclude, the challenges that face the landslide risk management are, in my opinion, linked to the possibility to develop a deeper understanding of the processes permitting a better detection of landslide prone areas and an improved forecast of failure or reactivation of landslides. In addition, any operation in slopes must take into account the full impact on the neighbouring environment in order to prevent human induced landslides.

Use of LIDAR in landslide investigations: a review

Michel Jaboyedoff · Thierry Oppikofer · Antonio Abellán ·
Marc-Henri Derron · Alex Loye · Richard Metzger · Andrea Pedrazzini

Received: 12 February 2010 / Accepted: 24 September 2010 / Published online: 19 October 2010
© The Author(s) 2010. This article is published with open access at Springerlink.com

Abstract This paper presents a short history of the appraisal of laser scanner technologies in geosciences used for imaging relief by high-resolution digital elevation models (HRDEMs) or 3D models. A general overview of light detection and ranging (LIDAR) techniques applied to landslides is given, followed by a review of different applications of LIDAR for landslide, rockfall and debris-flow. These applications are classified as: (1) Detection and characterization of mass movements; (2) Hazard assessment and susceptibility mapping; (3) Modelling; (4) Monitoring. This review emphasizes how LIDAR-derived HRDEMs can be used to investigate any type of landslides. It is clear that such HRDEMs are not yet a common tool for landslides investigations, but this technique has opened new domains of applications that still have to be developed.

Keywords Landslide · LIDAR · Laser scanner · High-resolution DEM · Topography analysis · Structural analysis

1 Introduction

Remote sensing techniques for landslides investigations are undergoing rapid developments. The possibility of acquiring 3D information of the terrain with high accuracy and high spatial resolution is opening up new ways of investigating the landslide phenomena. Recent advances in sensor electronics and data treatment make these techniques affordable. The two major remote sensing techniques that are exponentially developing in landslides investigation are interferometric synthetic aperture radar (InSAR) (Fruneau et al. 1996; Colesanti et al. 2003; Squarzoni et al. 2003), and light detection and ranging (LIDAR) (Carter et al. 2001; Slob et al. 2002; Haugerud et al. 2003; Slob and Hack 2004). InSAR techniques are usually ground-based (Stow 1996; Tarchi et al. 2003) or satellite-based

M. Jaboyedoff (✉) · A. Abellán · M.-H. Derron · A. Loye · R. Metzger · A. Pedrazzini
Institute of Geomatics and Risk Analysis, University of Lausanne, 1015 Lausanne, Switzerland

T. Oppikofer
Geological Survey of Norway, 7491 Trondheim, Norway

(Carnec et al. 1996; Singhroy 2009), and only rarely airborne. InSAR techniques are mainly dedicated to the detection and the quantification of small displacements over large areas. LIDAR (or laser scanning) provide high-resolution point clouds of the topography and has several applications that range from mapping (Ardizzone et al. 2007; Jaboyedoff et al. 2008a) to monitoring deformation (Gordon et al. 2001), landslides or rockfall displacements (Teza et al. 2007; Oppikofer et al. 2008; Abellan et al. 2010) to landslide in soils (Jaboyedoff et al. 2009a). The joint use of terrestrial laser scanning (TLS) and SAR techniques may help to understand landslide phenomena, as is discussed in Teza et al. (2008).

LIDAR is mainly used for landslide investigation to create accurate and precise high-resolution digital elevation models (HRDEM) in raster grids or triangulated irregular networks (TINs), which are 2.5D representations of the topography, or in true 3D point clouds with a high density of information. This density mainly depends on the position of the sensor: metric to decimetric resolution for airborne laser scanning (ALS) and centimetric to millimetric resolution for terrestrial laser scanning (TLS) (Shan and Toth 2008). Helicopter-based ALS can give a higher resolution than aircraft-based ALS and especially allows orientating the scanner in all directions (Vallet and Skaloud 2004).

The number of publications discussing the use of LIDAR in landslide studies has grown considerably during the last decade (Derron and Jaboyedoff 2010). Main applications range from mapping to monitoring and modelling slope mass movements. Two books were recently published: *“Topographic laser ranging and scanning”*, by Shan and Toth (2008) and *“Laser Scanning for the Environmental Sciences”*, by Heritage and Large (2009). The former provides a comprehensive compilation of the principles and fundamentals of LIDAR technologies, reflecting the state-of-the-art of all the physical aspects of the sensor (components, calibration, waveform analysis, quality control of LIDAR data, filtering and feature extraction techniques, etc.). Although some of the chapters may be slightly focused on the geomatics field (and hence, out of the scope for the readers of this review), the first three chapters by Petrie and Toth (2008) are an excellent basis for the understanding of instrumental issues: Chapter 1 describes basic (and not so basic) principles of laser profiling and scanning; Chapters 2 and 3 perform a detailed description of the main commercial and research systems currently available on the market for aerial and terrestrial LIDAR, respectively. As regards the book edited by Heritage and Large (2009), it provides numerous LIDAR applications to environmental sciences, being of great value for researches in the field of geomorphology, geostatistics, remote sensing and Geographic Information Systems (GIS). The contributions can be mainly divided into mapping (flooding areas, vegetation), geometrical aspects (study of geological outcrops and river gravel bars) and monitoring (rocky and sandy coastal erosion, river dynamics, etc.). Unfortunately, up to now there has been little effort to review the advances of LIDAR applications on landslides. This paper tries to fill this gap.

2 Laser scanning and/or LIDAR techniques

2.1 Short overview about LIDAR techniques and rangefinder

The acronym LASER (or laser) stands for Light Amplification by Stimulated Emission of Radiation. A laser is a device that produces and emits a beam (or a pulse series) of highly collimated, directional, coherent and in-phase electromagnetic radiation. As shown below, laser systems can be used for the acquisition of large amounts of 3D information of the

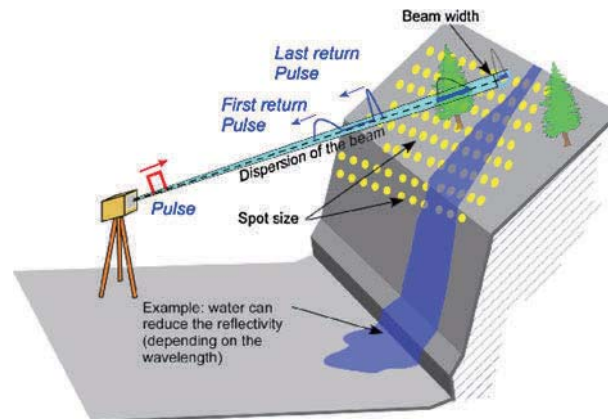


Fig. 1 Principles of laser scanner data acquisition, showing the example of TLS

terrain at an extremely fast recording rate (Fig. 1). Although LIDAR is a term commonly used in literature, laser scanner or laser range finder are preferred, which makes the link with past methods (laser ranging and laser profiling).

Laser scanning was developed in two ways, depending on the position of the sensor: airborne-based for ALS and ground-based for TLS. Basic principles and processing of the former are well-known issues since the end of the 1990s. A complete review of ALS systems can be found in Wehr and Lohr (1999) and in Baltsavias (1999). An updated and clear reference is the already commented book of Shan and Toth (2008). Literature on TLS has rapidly grown during the last 5 years (2005–2010). Petrie and Toth (2008) are a good reference for understanding basic principles of TLS. Detailed guidelines that should rule the use of the TLS in all the projects managed by the California Department of Transportation was written by Hiremagalur et al. (2007). Although an environmental scientist may have found this lecture out of the scope of his field of research, it provides useful information on standards and specifications for the quality control of different TLS. Finally, a brief review of LIDAR (and other conventional remote sensing techniques) applied to landslide monitoring is found in Prokop and Panholzer (2009) and in SafeLand Deliverable 4.1 (2010). A combination of both techniques, ALS and TLS, is frequently used to solve some acquisition problems for example the shadow areas when a scanned surface is parallel to the line of sight (LOS) of one of the sensor.

2.1.1 Measurement principle

A laser scanner consists of a transmitter/receiver of laser beam and a scanning device. Two different methods for range determination are possible (Wehr and Lohr 1999): phase and pulse method. The former allows more accurate range determination but suffers from a limited range (Petrie and Toth 2008). Alternatively, the latter allows a greater range, and is therefore implemented in most ALS and TLS used for Earth surface observations, including landslide studies (Wehr and Lohr 1999; Baltsavias 1999).

Both airborne- and ground-based sensors send out laser pulses that get back-scattered by various objects (ground surface, vegetation, man-made constructions etc.) and record the returning signal. Pulsed laser scanners use the measurement of the time of flight (Δt) of the laser pulse to compute the distance ($2 \times d = c \times \Delta t$) and mirrors or mechanics to

orientate the laser beam in a well-defined direction. Knowing this line of sight (LOS) direction and the attitude of the device (pitch, roll and yaw) allows determining the position Δx , Δy , Δz of a reflective surface relatively to the device. The range is measured without any artificial reflectors over an area equal to the laser's spot dimension (beam width projected on the topography), which increases with distance due to the laser beam divergence (Petrie and Toth 2008) (Fig. 1).

The absolute position of an ALS sensor is defined by a Global Positioning System (GPS), and its attitude is recorded by an inertial system. Finally, the point cloud coordinates are estimated ($x + \Delta x$, $y + \Delta y$, $z + \Delta z$) with an accuracy of around 15 cm (1σ) by using ground control points (Habib 2008). In practice, the position and orientation (attitude) of the TLS sensor are not defined precisely in the field, unless the TLS device is also coupled with an inertial system and a GPS. This makes necessary a further georeferencing of the TLS point cloud. This process is carried out by aligning the TLS point cloud, either using a set of ground control points or using another already georeferenced point cloud.

2.1.2 Analysis of back-scattered laser pulses

Most ALS and a few of the TLS systems use the full waveform of the laser signal. The full waveform of the back-scattered pulse includes some information on the properties of the reflexive objects within the beam area. This allows for instance removing part of the vegetation effect (Duong 2006; Harding 2008; Heritage and Large 2009). Alternatively, range measurement using TLS can be undertaken without discriminating the full waveform, but recording several back-scattered pulses from one emitted pulse. This procedure makes it possible to distinguish and to filter intermediate-range objects (vegetation, wires, birds and other undesired points). For landslides applications, the last returned pulse is usually the most relevant. Nevertheless, if the vegetation is too dense the laser beam will not reach the ground, and direct visibility (LOS) between the TLS and the scanned surface is of course necessary. However, these limitations are common with other remote sensing techniques (surveying, radar and/or optical).

It must be said that one of the main issue in laser scanning is the removal of the vegetation (Harding 2008) either by automatic methods or manually. If vegetation is dense sometimes the DEM created from ALS data is not better than a standard resolution DEM (approx. 25 m grid size) obtained from topographic maps.

2.1.3 Accuracy, resolution and point density

The typical accuracy of the laser instrument is ± 1.5 cm, within maximum distances of about 800–1,000 m (Manetti and Steinmann 2007). Nevertheless, the instrumental accuracy is usually lower in practical applications due to unfavourable conditions such as: poorly reflecting or very rough surfaces, parallel incident angles, bad weather conditions (rain or hot wind or fog), very bright ambient conditions, excessive range, etc.

Laser scanner's resolution is a parameter that determines the level of detail that can be observed in a point cloud. It is divided into range and angular (or spatial) resolution (Kamerman 1993; Lichti and Jamtsho 2006): (a) *Range resolution* is the ability of a rangefinder to resolve two objects on the same LOS; (b) *Angular resolution* is the ability to resolve two objects on adjacent LOS. This parameter is governed by two variables: sampling interval (also called point spacing, which is user defined) and laser beamwidth (which depends on the distance and the instrument). The estimation of the TLS resolution is usually misunderstood and commonly interpreted as equal to the point spacing, obviating

the influence of the laser beamwidth. Nevertheless, when sampling interval is lower than the laser beamwidth, fine details are in fact blurred. A detailed explanation of this effect can be found in Lichti and Jamtsho (2006). They proposed the use of the effective instantaneous field of view (EIFOV) as a measurement of the resolution of the TLS. The lower sampling interval proposed by these authors is 86% of the laser beamwidth.

For ALS, the point density usually ranges from 0.5 to 100 pts/m², while for TLS it ranges usually from 50 to 10,000 pts/m². In addition to the position, the intensity of the reflected signal is acquired. This parameter mainly depends on the beam wavelength, the type of material (colours and roughness of the reflective surface), soil moisture and angle of incidence (Ingensand 2006; Lichti 2007; Pesci et al. 2008; Voegtle et al. 2008).

The wavelength ranges between 500 and 1,700 nm (Wehr and Lohr 1999; Jaboyedoff et al. 2009a). For TLS, the acquisition range increases usually with longer wavelengths, from a few metres to 2,000 m if reflectivity of the surface is high (Jaboyedoff et al. 2009a).

2.1.4 Point cloud alignment

Alignment of the point cloud usually consists of a two-step process: a preliminary registration by a visual identification of homologous points and an optimization of the alignment using an Iterative Closest Points (ICP) procedure (Besl and McKay 1992; Chen and Medioni 1992). Using this algorithm, the differences between points are iteratively reduced by a minimization of a mean square cost function. Alternatively, the alignment over discrete parts of the slope can be carried out using the Roto-Translation technique described by different authors (Teza et al. 2007; Monserrat and Crosetto 2008; Oppikofer et al. 2009).

2.2 Short historical overview

Early attempts to acquire Earth surface data sets by ALS were performed along profiles using only an inertial system and other positioning technique for topographic mapping (Miller 1965; Krabill et al. 1984) with devices developed for water depth measurement (Hoge et al. 1980) or for altimetry purposes (Shepherd 1965). One of the first applications in geosciences of ALS (i.e., using inertial system coupled with GPS) has been to evaluate the topographical changes of the Greenland ice sheet (Krabill et al. 1995, 1999).

TLS appeared later than ALS at the end of the 1990s (Large and Heritage 2009). This instrument is an evolution of the electronic distance meter (EDM) and of total station, which benefits of the earlier ALS developments (many companies manufacturing ALS are now also selling TLS). EDM was developed during the late 1950s and early 1960s (Dallaire 1974). These instruments allow for a very accurate distance measurement. Nevertheless, these one-dimensional measurements were not suitable for the measurement of the 3D coordinates of single points (x, y, z). Furthermore, reflectors are usually required (Bromhead et al. 1988). By contrast, TLS measurements include real 3D information (x, y, z coordinates) plus intensity (I), and in some cases full waveform. In addition, TLS devices are reflectorless (Petrie and Toth 2008) allowing for a broad coverage of the surveyed area. The early tests for environmental application were made in the late 1990s and in the early twenty-first century (Lichti et al. 2000).

A systematic bibliographic survey was carried out by Derron and Jaboyedoff (2010) looking within the databases ISI Web of Knowledge and GEOREF. In this paper, the growth of the yearly production of publications and citations related to LIDAR and geosciences or landslide is analysed through logistic functions. The main outcome of this

analysis is that the community of geoscientists working with laser scanning techniques is presently building an innovative and useful knowledge and that this fast development has the potential to continue for the next 5–10 years.

3 Classification of the main applications

TLS and ALS can be used for different types of investigation, which can be subdivided in 4 types (Table 1): (1) Landslide detection and characterization; (2) Hazard assessment and susceptibility mapping; (3) Modelling; (4) Monitoring. This classification may have overlaps, but allows us to classify the main objectives of the research. Our classification is based not only on the type of mass movements described by Cruden and Varnes (1996) but also on the processes linked to these phenomena. The selected approach to study the mass movement is strongly dependant on the scanned object: (1) we refer as “rockfalls” to all the slope processes formed in rock slopes, from the detachment of the instability to the propagation; (2) we refer as “landslides” to all the material that suffer large scale and slow rate of deformation, in either soft, fine materials (soils) and/or weathered and weak rocky material, including deep-seated gravitational slope deformation (DSGSD) (Agliardi et al. 2009); finally, (3) we refer as “debris-flows” to slope movements formed by debris type of material, moving down the slope as a flow. This classification makes sense in terms of LIDAR analysis, because the analyses of the geomorphic features are not necessarily scale dependant. As an example, it can be impossible to distinguish a DSGSD from a classical landslide only by inspecting a hillshade relief without knowing the scale.

Table 1 Classification of the different applications of LIDAR technologies in landslide studies

	Landslide	Rockfall	Debris-flow
(1) Landslide detection and characterization (In Sect. 4)	<ul style="list-style-type: none"> • Mapping of geomorphic features 	<ul style="list-style-type: none"> • Rock face imaging and characterization • Calculate discontinuity orientation 	<ul style="list-style-type: none"> • Detection of mobilizable volumes • Hydromorphic characterization
(2) Hazard assessment and susceptibility mapping (In Sect. 5)	<ul style="list-style-type: none"> • Mainly as support for mapping 	<ul style="list-style-type: none"> • Some attempts for susceptibility and hazard mapping (not yet achieved) 	<ul style="list-style-type: none"> • Input for mapping hazard based on geomorphologic approach
(3) Modelling (In Sect. 5)	<ul style="list-style-type: none"> • Classical modelling tools are not able yet to handle huge 3D information density • HRDEM allow more accurate landslide modelling by improving their geometrical characterization 	<ul style="list-style-type: none"> • High-resolution DEM for trajectory modelling 	<ul style="list-style-type: none"> • Input for spreading modelling
(4) Monitoring (In Sect. 6)	<ul style="list-style-type: none"> • Monitoring of surface displacements • Volume budget 	<ul style="list-style-type: none"> • Monitoring of surface displacement • Detection of pre-failure displacements (under development) • Quantification of rockfall activity (volumes) 	<ul style="list-style-type: none"> • Sediment budget • Monitoring of morphologic changes in channel

4 Detection and characterization of mass movements

4.1 Landslide

4.1.1 ALS

ALS permits an improvement in the landslide inventory mapping and more generally of geological mapping (Borlat et al. 2007), by increasing the resolution of the landslide contours, permitting to identify scarps and displaced material. Nevertheless, the same conceptual methods to detect landslides are still usually employed (Soeters and Van Westen 1996; Keaton and DeGraff 1996). The morphological features of the landslides (e.g. scarps, mobilized material, foot) are easy to delineate based on hillshades of the produced HRDEM (Carter et al. 2001; Haugerud et al. 2003; Ardizzone et al. 2007; Jaboyedoff et al. 2008a; Corsini et al. 2009). This approach does not replace field investigations, but it changes the fieldwork methods, which become part of the validation processes of a landslide inventory produced by HRDEM analysis (Fig. 2).

The detection can be performed either manually (e.g. expert criteria such as eye inspection) or automatically (e.g. feature detection such as the curvature or roughness of the topography). McKean and Roering (2004) showed that spreading of topographic orientations within an earth-flow is higher than that in undisturbed area. An extension of this method using Fourier analysis of the relief demonstrates that this method can classify more

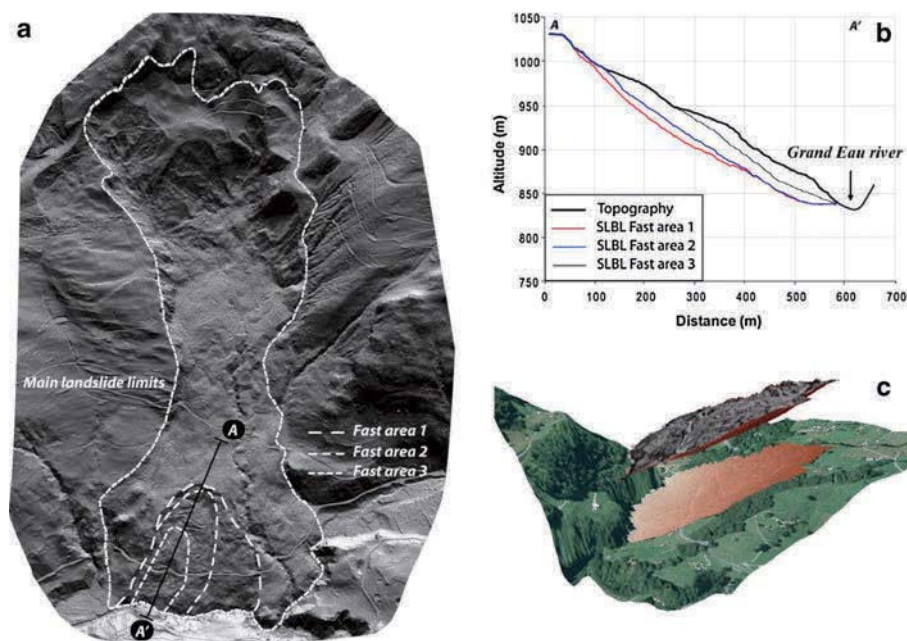


Fig. 2 La Frasse landslide (Switzerland): **a** 3D view of the shaded relief of the main landslide extent. Three sectors moving faster than the surrounding areas were identified at the toe of the landslide. **b** Cross-section through the fast-moving area showing the modelled failure surfaces obtained using the SLBL method (Jaboyedoff et al. 2004b). **c** 3D view of the volume of the faster area 3 (Data from swisstopo)

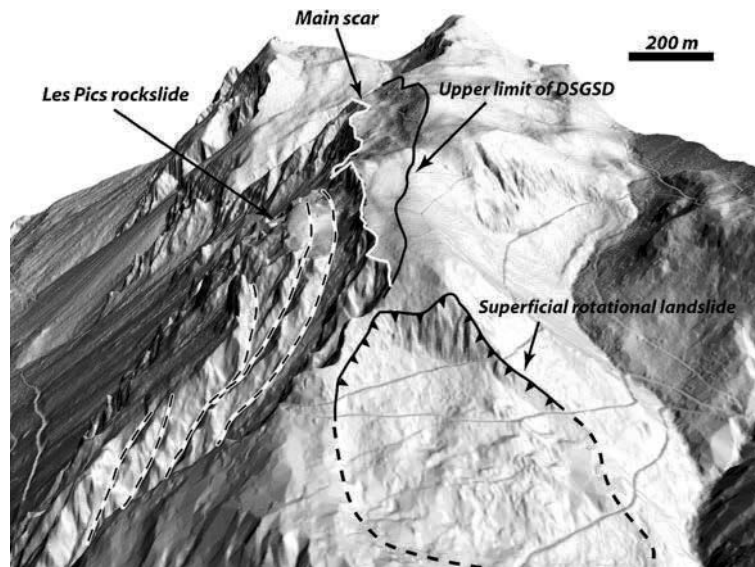


Fig. 3 Hillshade view of the upper part of Les Pics instability (Muraz, Switzerland). Gravitational features as scarps, trenches and depressions forming the “Les Pics DSGSD” could be clearly identified. The real instability extend could be better defined using LIDAR-derived DEM than in aerial photographs or from topographic maps (Data from swisstopo)

than 80% of total area that has already suffered a landslide (or not) in western US (Booth et al. 2009). Geomorphic criterion based on geostatistics (Glenn et al. 2006) succeeds in differencing landslide activities. Nevertheless, such methods are not easy to apply due to following reasons: (a) expert criteria are needed (interpretation of the results) and (b) the presence of vegetation may degrade the DEM quality (Kasai et al. 2009). In addition, the detailed morphology provided by HRDEM coupled with geologic information can allow forecasting of the sensitive zones even if the triggering is human induced (Schulz 2007). The interpretation of DSGSD is also improved by using HRDEM (Agliardi et al. 2009; Oppikofer 2009; Corsini et al. 2009) especially because it permits a precise delineation of the limits (Fig. 3).

4.1.2 TLS

Only few applications exist on landslide characterization (Rowlands et al. 2003), but in several cases TLS is a very useful tool to interpret the landslide mechanism, delineate limits and estimate volumes (Corsini et al. 2009; Dunning et al. 2009). Jaboyedoff et al. (2009a) shows a case study of circular landslides in silty sediments in river banks.

4.2 Rockfall

TLS and ALS techniques are responsible for a great improvement in rock slope characterization, mainly because the rock instabilities are principally controlled by structures that are at least locally planar. The TLS applications characterizing rock mass are numerous

(Slob and Hack 2004; Jaboyedoff et al. 2007; Oppikofer et al. 2009; Sturzenegger and Stead 2009; Armesto et al. 2009; Lato et al. 2009), but still quite rare for ALS-DEM.

4.2.1 ALS

Structural analysis at regional scale are proposed using ALS-derived HRDEM using the principle of COLTOP (Jaboyedoff et al. 2004a, 2007, 2009b), which allows to attribute a unique colour for each topographic orientation. This permits also to create stereonet on the basis of plane orientations measured directly on the point cloud (Fig. 4). The main sets of structural features have been identified in several rockslides in Norway (Derron et al. 2005). This approach also allowed a fast structural characterization of the hardly accessible Mount Steele rockslide in Yukon, Canada (Brideau et al. 2009) and the reinterpretation of former rockslide such as Frank slide (Sturzenegger et al. 2007a; Froese et al. 2009). At regional scale, the fjord valley of Tafjord in Norway has been investigated in order to characterize the present and former rock slope instabilities, such as their volume and mechanisms (Oppikofer 2009).

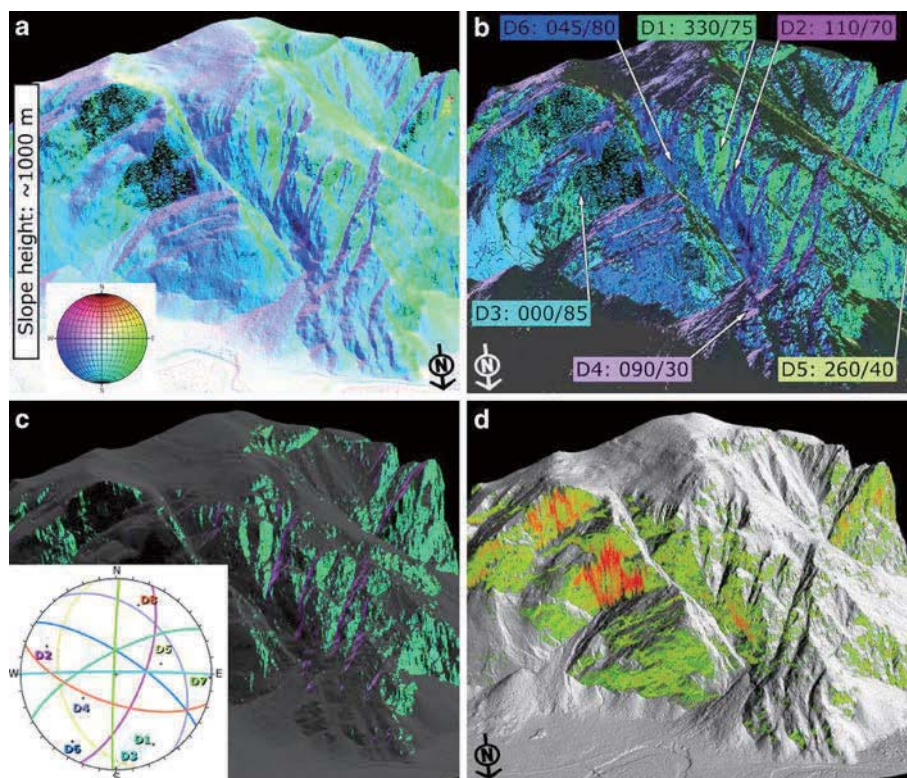


Fig. 4 ALS-DEM from Yosemite National Park (by courtesy of G. Stock). **a** COLTOP coloured DEM. **b** Identified discontinuity sets. **c** Discontinuities D1 and D2 forming a wedge that promoted instabilities. **d** Relative density of daylighting D1-D2 wedges the topography

4.2.2 TLS

TLS characterization of rock slopes are among the first applications using TLS for slope mass movement, mainly to obtain accurate slope profile and discontinuity sets orientations (Bornaz et al. 2002; Slob et al. 2002). A technical report of the US Department of Transportation (Kemeny and Turner 2008) provides a brief introduction of the main commercial hardware and softwares and best practices for fieldwork campaigns.

Several studies are proposing different ways to characterize discontinuity sets, which can be mainly classified as (a) using fitting planes (Fernández 2005; Abellan et al. 2006; Oppikofer et al. 2008; Sturzenegger and Stead 2009), (b) using TIN surfaces as indicators of the plane orientations (Feng et al. 2001; Slob et al. 2002). A description of the methodology employed for rockmass characterization using the commercial software Split-FX is provided in Kemeny and Post (2003) and Kemeny and Turner (2008). Several authors (Lato et al. 2009; Abellán et al. accepted) have shown that there is an optimal number of points for the point cloud to get reliable results depending on the precision of the device: a sparse TIN suffers from smoothening over corners and edges, creating inaccuracies in plane representation. On the other hand, a dense TIN is affected by data noise. (c) Other techniques allow for the automatic delimitation of a set of neighbourhood points characterized by the same normal vector. As a result, the calculation of the orientation of the discontinuity planes is obtained. The COLTOP technique (Jaboyedoff et al. 2004a, 2007, 2009b; Derron et al. 2005) permits to visualize the orientation of each discontinuity set by a unique colour, which makes the approach very similar to a field data acquisition (COLTOP-3D, www.coltop3d.ch). The extracted data permit to analyse the rock instability mechanisms (Janeras et al. 2004; Jaboyedoff et al. 2008b; Oppikofer et al. 2009).

Different authors have pointed out the existence of two types of biases in the determination of the orientation of discontinuities (e.g. Sturzenegger and Stead 2009; Lato et al. 2009): (a) scale bias, when discontinuity sets are smaller than the spatial resolution (point spacing) and (b) orientation bias, when the incidence angle of a given data set influences the spatial resolution, and hence, the number of poles in stereonet when doing automatic procedures.

Another area of application that is merging in rock slope characterization is the roughness determination (Fardin et al. 2004; Haneberg 2007; Tatone and Grasselli 2009) aimed to better quantify the well-known methods for rock mass rating systems (Romana 1993). Nevertheless, certain limitations are linked to the achievement of this aim, such as the intrinsic instrumental accuracy, resolution and the influence of different scanner positions on the final results (Sturzenegger et al. 2007b). Although these limitations, further studies are necessary due to the great potential of such methods assuming self-similarity hypothesis (Fardin et al. 2004).

4.3 Debris-flow

ALS-derived DEM gives an accurate topography and permits to identify morphologies that are significant in order to characterize the past activity. To this end, morphometric indicators such as roughness, and curvature of the slope are used (Staley et al. 2006; Cavalli and Marchi 2008). This approach gives quite good results in discriminating the past debris-flow activity (Cavalli and Marchi 2008) but presents some limitations (Staley et al. 2006). The variograms inspection gives promising results for characterization of the landforms (Trevisani et al. 2009).

TLS has also been used to assess limited sections of channels, allowing very detailed mapping and section profiles evolution (Oppikofer 2009; Theules et al. 2009).

5 Hazard assessment, susceptibility mapping and modelling

5.1 Landslide

5.1.1 ALS

One of the earliest applications of ALS-DEM in landslide susceptibility mapping and modelling is the work of Dietrich et al. (2001) (see also Montgomery et al. 2000). They showed that a 1 m resolution ALS-DEM improved greatly the results of the model SHALSTAB, an infinite slope stability model. One of the most achieved study of landslide hazard assessment using ALS-DEM is the one made by the USGS on the Puget Sound area (Washington state; Baum et al. 2005). In this study, field investigation is coupled with HRDEM analysis and shallow landslide modelling using TRIGRS (Savage et al. 2003), a sophisticated infinite slope model including transient infiltration. This study demonstrates improvements provided by ALS-DEM for hazard mapping. Along the same line, Haneberg et al. (2009) have shown convincing results for shallow landsliding, coupling an infinite slope model with geomorphic characterizations using an ALS-DEM.

Of course, the traditional hazard mapping by field investigation is improved by ALS-DEM, especially for inventories but also for characterizing the susceptibility using morphometric indicators (Chigira et al. 2004; Haneberg et al. 2005; Jaboyedoff et al. 2008a). We can also expect that it will soon possible to infer hazard by comparing several ALS-DEM of different epochs. This was already proposed by Chigira et al. (2004) who emphasized the possibility to use two inventories to assess hazard, but in their application the first inventory was still produced by field work only.

The ALS-DEM allows a detailed delimitation of the landslides on the topographical surface (van den Eeckhaut et al. 2007; Corsini et al. 2009). Using these limits and the DEM, it is possible to infer the failure surface in 3D. For instance, the sloping base level (SLBL) concept (Jaboyedoff et al. 2004b, 2009b) makes it possible to obtain very quickly a planar or curved quadratic surface by using simple geometrical rules. For example, Fig. 2 shows La Frasse landslide in the Swiss Alps and the expected failure surface of a fast-moving part.

5.1.2 TLS

TLS is mostly used for characterization or monitoring of landslides and not really for hazard mapping. Nevertheless, TLS can greatly improve the site-specific modelling, especially when the topography is changing and if only a poor DEM is available. For example, a detailed slope profile extracted from a TLS-DEM has permitted to identify the destabilized zone of an earth-flow using a standard Bishop analysis (Jaboyedoff et al. 2009c).

5.2 Rockfall

5.2.1 ALS

Regional rockfall hazard or susceptibility assessment from source area to rockfall propagation using ALS-DEM is not yet implemented as a routine, although all the pieces of the puzzle are present. The first issue is to locate the source areas. This is often performed at

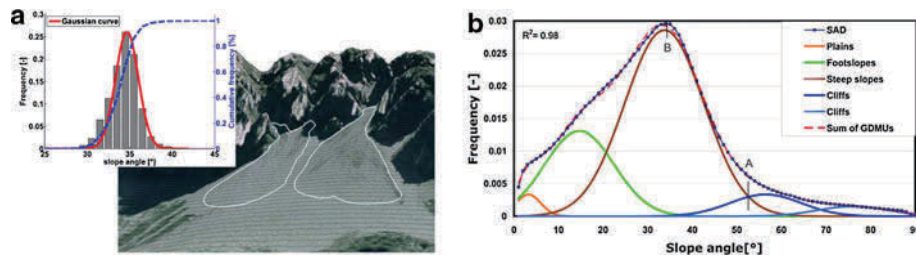


Fig. 5 Example of the slope angle distribution (SAD) computed on a ALS-DEM: **a** SAD of an undisturbed scree slope (outlined in *white*) showing that the slope angle values follow a normal distribution around an average value close to 35°. **b** SAD of an alpine valley decomposed into 5, Gaussian distributions; “A” indicates the threshold angle above which the slope belongs dominantly to the cliffs and is therefore considered as potential rockfall source area; “B” indicates the mode of GDMU steep slopes. The two cliffs Gaussian distributions represent two families of bare rock cliff faces lithologically distinct (modified after Loye et al. 2009)

regional scale using simple slope angle thresholds (Guzzetti et al. 2003; Frattini et al. 2008). But, as shown by Loye et al. (2009), more information can be potentially extracted from the slope angle distribution. By decomposing the histogram of slope angles of an area into Gaussian distributions, it is possible to identify the threshold above which the relief is dominantly composed of cliffs (Fig. 5). This threshold depends on the type of bedrock, the presence or absence of a soil cover and the DEM resolution (Loye et al. 2009). This method makes it possible to discriminate efficiently the true cliffs from the one drawn on topographic maps. In addition, as proposed by Günther (2003) and Jaboyedoff et al. (2004c), structural analysis performed on ALS-DEM (Fig. 4) can be the basis for kinematic test. As discussed in Janeras et al. (2004), the accuracy of the results is greatly improved by using a HRDEM.

Hazard assessment requires often performing trajectographic modelling in order to delineate the propagation area. The modelling has been greatly improved by the ALS-DEM (Agliardi and Crosta 2003; Lan et al. 2007) by introducing more dispersion in the propagation (Fig. 6), as demonstrated by Agliardi and Crosta (2003). In addition, the kinetic energy profile is greatly modified when the resolution of the DEM is increased. Both parameters are of primary importance for hazard mapping and dimensioning of mitigation measures.

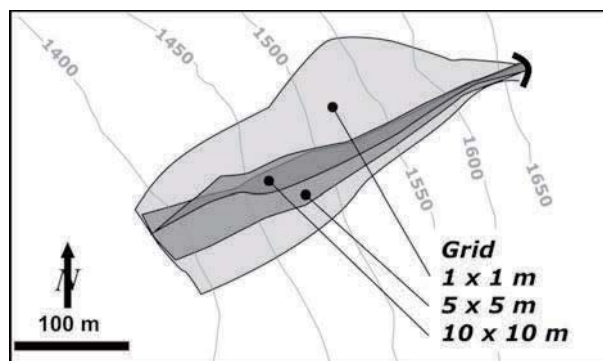


Fig. 6 Influence of the DEM mesh size in the scattering of the rockfall trajectories (after Agliardi and Crosta 2003)

5.2.2 TLS

A great improvement in the rockfall hazard assessment is the monitoring of fallen blocks from a cliff between two epochs or more (Rosser et al. 2005; Lim et al. 2006; Lato et al. 2009; Abellan et al. 2010; Pedrazzini et al. 2010). Indeed, such approaches allow for the quantification of the magnitude and activity of rockfalls in a cliff. Rosser et al. (2007) quantified the increase in rockfall activity some months previous to the occurrence of larger events. Similarly, when this activity decreases, it may be inferred that the potential instability becomes stabilized during a given period (Pedrazzini et al. 2010). In addition, new methods of mobile terrestrial LIDAR along road cuts already produce detailed 3D models that provide data for structural analysis. If such acquisitions are repeated over time, they can be used to detect the most active areas (Lato et al. 2009).

5.3 Debris-flow

As suggested by different authors (e.g. Jakob 2005; Horton et al. 2008), process-based modelling of debris-flows is a difficult task because of the complexity of the phenomenon and the variability of controlling factors. Detailed topography (slope angle of channels as well as the channel profile) together with the available channel material can be critical parameters (Hungar 2005).

These are the major input from both ALS- and TLS-DEM, and they are critical to assess properly the volumes that can be mobilized. Based on the topography curvature of ALS-DEM and other properties, it is also possible to extract potential source areas for debris-flows (Horton et al. 2008). The second improvement provided by ALS-DEM is the possibility to improve the modelling of propagation, despite the fact that computing time is very high if a full resolution ALS-DEM is used to compute the models on large areas. Similarly to rockfall modelling, Stolz and Huggel (2008) have shown that the modelling of debris-flows can be really improved by using HRDEM. Nevertheless, it must be emphasized that as a channel is a dynamic body and breakouts are always possible, a full resolution approach can also be a pitfall for models. For instance road embankments on the HRDEM are diverting flow, while in reality road bridges often exist to let the flow pass. Nevertheless, ALS-derived HRDEM with reduced resolution (10×10 m) permits to obtain very good results for propagation calculations at regional scale (Horton et al. 2008).

6 Monitoring

6.1 Landslide

Before the existence of remote sensing techniques such as LIDAR, RADAR and photogrammetry, landslide monitoring was based on single-point measurements, using either GPS or total stations. But obtaining the complete field of displacements for the whole landslide is of great help to understand landslide kinematics and failure mechanism (Fig. 7). Laser scanning is nowadays a common tool for displacement monitoring even if few published papers exist. The basic principle is the same for both ALS- and TLS-DEM, requiring at least two epochs of HRDEM acquisition. Nevertheless, as monitoring requires both high resolution and high precision data sets, most of the works have been done up to now using TLS-derived HRDEMs. The results are either vectors between two points (or common areas) or distances between two data sets (point to surface comparison) either in a

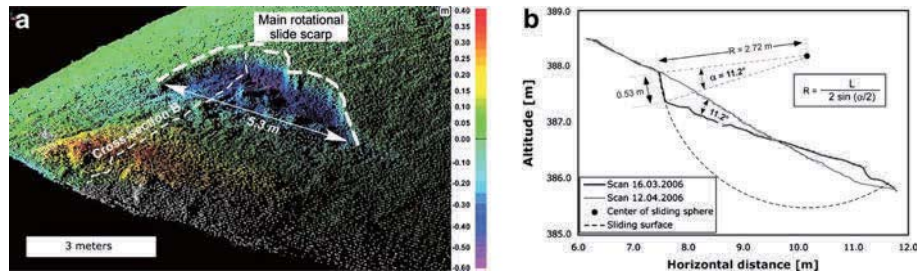


Fig. 7 Example of interpretation of landslide mechanism by using two successive TLS-DEMs performed on the 16 March and 12 April 2006 along the Sorge river (Switzerland). **a** Altitude difference between the scans and **b** interpretation of the cross-section showing a rotational landslide (modified after Jaboyedoff et al. 2009a)

user-defined direction or as shortest distance (Hausdorff distance) between the two surfaces. This difference calculation allows for the computation of volume differences, as is discussed by different authors (Bitelli et al. 2004; Chen et al. 2006; Corsini et al. 2007; Teza et al. 2007; Dewitte et al. 2008; Jaboyedoff et al. 2009a; Prokop and Panholzer 2009; Mueller and Loew 2009; Avian et al. 2009; Baldo et al. 2009).

The standard deviation of the measurements between two epochs can be quite high, depending on multiple factors, such as the quality of the TLS data sets, the density of points, the existence of vegetation, the roughness of the relief, the quality of the alignment between the scans, the relative or absolute positions of the TLS and the variation of the surface of the terrain between the two epochs. For instance, these values were not less than 5 cm at 100 m for Prokop and Panholzer (2009), or 3 cm for a 300 m range for Teza et al. (2008). In our recent experiences, it is possible to compare TLS data sets acquired consecutively and reach values of the standard deviation of around 1 cm for close ranges (less than 100 m) and high point densities. This is in agreement with the results obtained on the “fast” moving landslide of Super-Sauze (France) where it was possible to measure velocities of 3.2 cm/day (Travelletti et al. 2008).

The low number of monitored landslides using ALS-derived HRDEM is due to the lower precision of ALS compared to TLS (~ 15 cm vs. ~ 1.5 cm). As a result, comparison of such HRDEM requires a longer period between two acquisitions to obtain reliable results. Nevertheless, using classical photogrammetry on ancient aerial photos, it is possible to obtain displacement maps simply comparing objects locations on the pictures and on the ALS-DEM (Roering et al. 2009; Baldo et al. 2009).

6.2 Rockfall

Monitoring surface displacements in rock slopes is, in a way, simpler than in soil slopes because the displacements can be considered as rigid body transformations (Teza et al. 2007; Monserrat and Crosetto 2008; Abellan et al. 2009; Oppikofer et al. 2009). As a consequence, it is easier to identify and decompose the movements as a combination of translations and rotations of different parts of the slope. A good example for monitoring surface displacements is the huge slope displacements that occurred at the eastern flank of the Eiger (Switzerland), which was moving by more than 70 cm/day during the paroxysmal activity (Oppikofer et al. 2008). The detailed displacement analysis using the rigid body transformations of the upper part of the Åknes rockslide in Norway combined with

detailed structural analysis allowed to derive the possible landslide mechanism (Oppikofer et al. 2009). Recent developments improved this methodology by introducing Euler angles to describe the rotational movement of the Cinque Torri rock towers in Italy (Viero et al. 2010).

Together with these monitoring results, the possibility to link spatial and temporal prediction of rockfalls constitutes a great challenge for landslide monitoring. Indeed, two different precursory indicators are currently being investigated: (1) the increase in rockfall activity before the final collapse, shown by Rosser et al. (2007) for a hard rock cliff at the coast of Staithes (UK); (2) the detection of precursory displacements is investigated for large rockfalls (e.g. 125 cm/day preceding a 170,000 m³ partial collapse of the Eiger rockslide, Oppikofer et al. 2008) and fragmental rockfalls (e.g. centimetric displacements preceding rockfalls with few to hundred cubic metres, Abellan et al. 2009, 2010) (Fig. 8). Although in certain cases precursory movements can be of the same order of magnitude than instrumental errors, different authors have observed that errors can be considerably reduced by taking into account the information of the neighbouring points, i.e. noise reduction by filtering or averaging (Lindenbergh and Pfeifer 2005; Monserrat and Crosetto 2008; Abellan et al. 2009). As an example, it was shown that it is possible to detect millimetric surface displacements in an outdoor experiment, even if single points had a higher standard deviation (Abellan et al. 2009).

6.3 Debris-flow

As we already mentioned, it is possible to monitor the channel changes using TLS (Oppikofer 2009; Theules et al. 2009) (Fig. 9). Recently, Scheidl et al. (2008) were able to compare two deposition areas of debris-flows that occurred during the heavy rainfall of August 2005 in Switzerland using two ALS-DEM acquisitions. They obtained good results but still with high errors that can reach more than 50% for eroded volumes, which is probably overestimated because the errors are computed pixel by pixels.

7 Discussions and perspectives

The real use for landslide studies of HRDEM from ALS or TLS started in 2000, although some developments started in the 1960s. For ALS this comes from the fact that GPS has

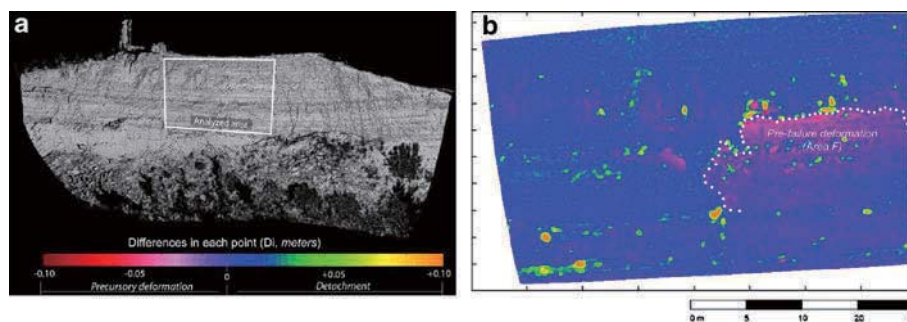


Fig. 8 Spatial prediction of rockfalls through the detection of pre-failure deformation using TLS. **a** Study area and analysed area; **b** comparison of TLS data sets during a time span of 303 days. Colour scale from -0.1 up to 0.1 m (after Abellan et al. 2010)

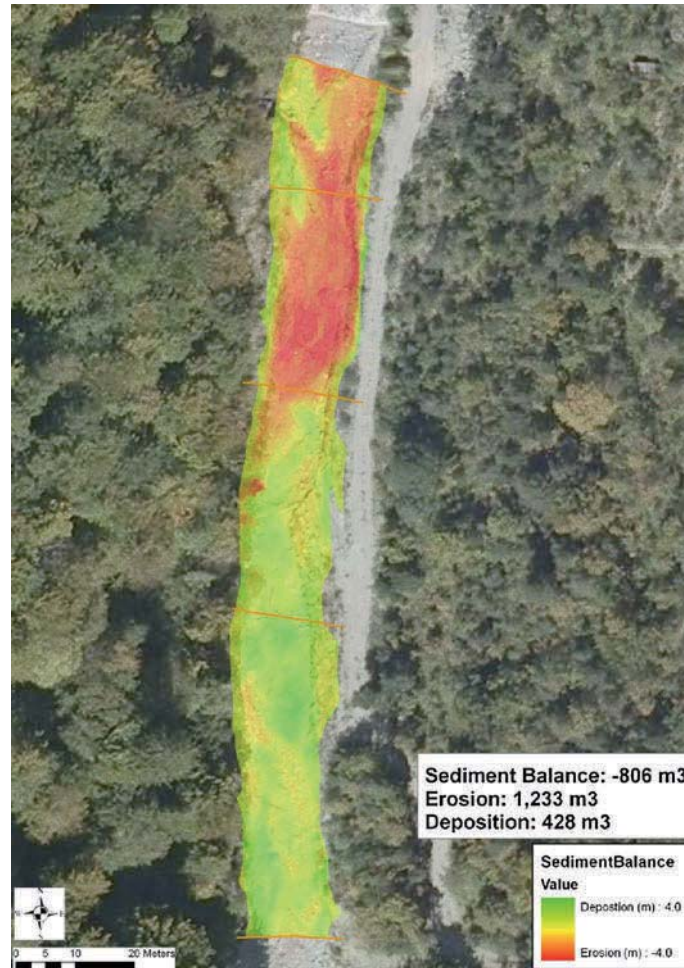


Fig. 9 Sediment budget calculated by the subtraction of two TLS data sets of the bed of the Manival torrent (France) (modified after Theules et al. 2009)

become available for public application during the mid-1990s. The TLS device market developed later because of the lack of software for 3D data processing and problems for handling huge amount of data (point clouds with several millions of points).

Main advantages of the technique are the acquisition of real 3D information, the fast data acquisition, easy set up and portability and its high resolution, at least for the ground-based instrument. Reversely, the main limitations of the ground-based technique are the existence of shadow areas caused by rugged topography, the huge quantity of acquired information and the needed post-processing techniques for filtering and alignment of the data sets, i.e. when a large area is scanned, several data sets must be merged and due to error propagation the alignment started to be more complicated and time-consuming to obtain reliable results.

As we have seen the number of applications is increasing very quickly. This is underlined by the fact that the recent syntheses about landslides risk include laser scanning

and HRDEM as important tools (Van Westen et al. 2006; Fell et al. 2008; Derron and Jaboyedoff 2010). Figures including LIDAR images are presently published in papers without any other information, which means that it is now considered as a routine method demonstrative enough to be self-explanatory (Jibson 2006).

All the presented applications indicate that research has not yet well defined the limit of the LIDAR techniques, without taking into account the future advances, especially for monitoring purposes. It is clear that HRDEM is an inestimable support not only for landslide mapping, but also for hazard assessment. The use of the full data quality for modelling purposes is still not achieved.

LIDAR intensity provides some information on the material type, but it remains a difficult task to discriminate different materials (e.g. lithologies) based on the laser reflectivity because of the various causes of intensity variations. This has been applied with good results to the classification of river bed at different epochs by identifying water–land boundary (Höfle et al. 2009). Some research groups are now looking at further refinement of LIDAR imaging coupled with other remote sensing techniques. LIDAR data sets merged with RGB colours obtained from optical camera were tested on the Vesuvius crater providing encouraging results but is still far from an operative one (Pesci et al. 2007, 2008). Coupled with LIDAR data sets, the hyperspectral camera permits to get additional information on rock characteristics (Kurz et al. 2008).

One of the most promising advances is probably to analyse simultaneously InSAR results and HRDEM. The problem is to obtain coherent results between LOS distance changes from InSAR data and the 3D displacement vector extracted from LIDAR data. In any case, the first results are already consistent for TLS (Teza et al. 2008) and for ALS (Roering et al. 2009).

8 Conclusions

Above synthesis and considerations shows that HRDEM is increasingly being used in the landslide community, becoming an essential tool for landslide risk management s.l. In a few years, LIDAR sensors will probably be a standard tool for landslide analysis. Following the current trend, full coverage by ALS-DEM in most of the rich countries will be reached within the next 10 years. As the technique is also progressing, more accurate and precise ALS and TLS devices will appear, allowing for the generation of more accurate DEM. In addition, the vertical cliffs will certainly be also better imaged by new equipments, such as helicopter-based LIDAR sensors. Nevertheless, the huge amount of data will remain a problem as the computers will need to be more powerful with increasing data acquisition capacity as it is already the case with mobile LIDAR systems that have an acquisition rate of up to 200 kHz.

The real challenge is to develop new methods to better take benefit from HRDEM. Indeed a lot of new information can be extracted from such DEM that we not yet contrived to do. Although great advances have been developed in geometrical aspects, most of the conceptual models remain tied to the past. Could we combine these accurate HRDEM with a better modelling of landslide mechanisms (including rockfalls and debris-flows)? Is it possible to integrate surface measurements with early warning systems? The challenge for HRDEM exploitation is not only linked to landslide but also for instance to the analysis of fracturing at the surface using HRDEM and its extrapolation to underground.

Acknowledgments We are grateful to the National Swiss Foundation for Science project Number 200021-118105 and the EU project SafeLand (Grant Agreement No: 226479). We thank Dr. Greg Stock, geologist at Yosemite National Park, for providing us LIDAR data and J. Theules from CEMAGREF (Grenoble, France) who provided us one figure for illustrating TLS and debris-flows. In addition we are grateful to Marie Charrière and Florian Humair for editing some parts of the texts. The three anonymous reviewers are acknowledged for their valuable comments that helped us to improve the manuscript.

Open Access This article is distributed under the terms of the Creative Commons Attribution Noncommercial License which permits any noncommercial use, distribution, and reproduction in any medium, provided the original author(s) and source are credited.

References

- Abellan A, Vilaplana JM, Martinez J (2006) Application of a long-range terrestrial laser scanner to a detailed rockfall study at Vall de Nuria (Eastern Pyrenees, Spain). *Eng Geol* 88:136–148. doi:10.1016/j.enggeo.2006.09.012
- Abellan A, Jaboyedoff M, Oppikofer T, Vilaplana JM (2009) Detection of millimetric deformation using a terrestrial laser scanner: experiment and application to rockfall event. *Nat Hazards Earth Syst Sci* 9:365–372. doi:10.5194/nhess-9-365-2009
- Abellan A, Vilaplana JM, Calvet J, Blanchard J (2010) Detection and spatial prediction of rockfalls by means of terrestrial laser scanning modelling. *Geomorphology* 119:162–171. doi:10.1016/j.geomorph.2010.03.016
- Abellan A, Vilaplana JM, Calvet J, Garcia-Sellès D, Asensio E (accepted) Rockfall monitoring by terrestrial laser scanning. Case study of the basaltic rock face at Castellfollit de la Roca (Catalonia, Spain). *Nat Hazards Earth Syst Sci*
- Agliardi F, Crosta GB (2003) High resolution three-dimensional numerical modelling of rockfalls. *Int J Rock Mecha Mining Sci* 40:455–471. doi:10.1016/S1365-1609(03)00021-2
- Agliardi F, Crosta GB, Zanchi A, Ravazzi C (2009) Onset and timing of deep-seated gravitational slope deformations in the eastern Alps, Italy. *Geomorphology* 103:113–129. doi:10.1016/j.geomorph.2007.09.015
- Ardiszone F, Cardinali M, Galli M, Guzzetti F, Reichenbach P (2007) Identification and mapping of recent rainfall-induced landslides using elevation data collected by airborne Lidar. *Nat Hazards Earth Syst Sci* 7:637–650. doi:10.5194/nhess-7-637-2007
- Armesto J, Ordóñez C, Alejano L, Arias P (2009) Terrestrial laser scanning used to determine the geometry of a granite boulder for stability analysis purposes. *Geomorphology* 106(3–4):271–277. doi:10.1016/j.geomorph.2008.11.005
- Avian M, Kellerer-Pirklbauer A, Bauer A (2009) LiDAR for monitoring mass movements in permafrost environments at the cirque Hinteres Langtal, Austria, between 2000 and 2008. *Nat Hazards Earth Syst Sci* 9:1087–1094. doi:10.5194/nhess-9-1087-2009
- Baldo M, Bicocchi C, Chiocchini U, Giordan D, Lollino G (2009) LiDAR monitoring of mass wasting processes: The Radicofani landslide, Province of Siena, Central Italy. *Geomorphology* 105:193–201. doi:10.1016/j.geomorph.2008.09.015
- Baltsavias EP (1999) Airborne laser scanning: basic relations and formulas. *ISPRS J Photogramm Remote Sens* 54:199–214. doi:10.1016/S0924-2716(99)00015-5
- Baum RL, Coe JA, Godt JW, Harp EL, Reid ME, Savage WZ, Schulz WH, Brien DL, Chleborad AF, McKenna JP, Michael JA (2005) Regional landslide-hazard assessment for Seattle, Washington, USA. *Landslide* 2:266–279. doi:10.1007/s10346-005-0023-y
- Besl P, McKay N (1992) A method for registration of 3-D shapes. *IEEE Trans Pattern Anal Mach Intell* 14:239–256. doi:10.1109/34.121791
- Bitelli G, Dubbini M, Zanutta A (2004) Terrestrial laser scanning and digital photogrammetry techniques to monitor landslide bodies. In: Proceedings of the XXth ISPRS congress, Istanbul, Turkey, Commission V, WG V/2
- Booth AM, Roering JJ, Perron JT (2009) Automated landslide mapping using spectral analysis and high-resolution topographic data: Puget Sound lowlands, Washington, and Portland Hills, Oregon. *Geomorphology* 109:132–147. doi:10.1016/j.geomorph.2009.02.027
- Borlat C, Eparid JL, Jaboyedoff M (2007) Use of a laser-DTM for geological survey, structural interpretation and update of existing maps: example in the Jura Mountains (Switzerland). *Geophys Res Abst* 9:07424

- Bornaz L, Lingua A, Rinaudo F (2002) Engineering and environmental applications of laser scanner techniques. *Int Arch Photogramm Remote Sens* 34(3B):40–43
- Brideau MA, Yan M, Stead D (2009) The role of tectonic damage and brittle rock fracture in the development of large rock slope failures. *Geomorphology* 103:30–49. doi:10.1016/j.geomorph.2008.04.010
- Bromhead EN, Curtis RD, Schofield W (1988) Observation and adjustment of a geodetic survey network for measurement of landslide movement. In: Bonnard C, Balkema Publishers AA (eds) Proceedings of the 5th international symposium on landslides. Lausanne, Switzerland, pp 383–386
- Carnec C, Massonnet D, King C (1996) Two examples of the use of SAR interferometry on displacement fields of small spatial extent. *Geophys Res Lett* 23(24):3579–3582. doi:10.1029/96GL03042
- Carter W, Shrestha R, Tuell D, Bloomquist D, Sartori M (2001) Airborne laser swath mapping shines new light on earth's topography. *Eos, Trans, Am Geophys Union* 82(46):549, 550, 555
- Cavalli M, Marchi L (2008) Characterisation of the surface morphology of an alpine alluvial fan using airborne LiDAR. *Nat Hazards Earth Syst Sci* 8:323–333. doi:10.5194/nhess-8-323-2008
- Chen Y, Medioni G (1992) Object modelling by registration of multiple range images. *Image Vis Comput* 10:145–155. doi:10.1016/0262-8856(92)90066-C
- Chen RF, Chang KJ, Angelier J, Chan YC, Deffontaines B, Lee CT, Lin ML (2006) Topographical changes revealed by high-resolution airborne LiDAR data: the 1999 Tsaoling landslide induced by the Chi-Chi earthquake. *Eng Geol* 88:160–172. doi:10.1016/j.enggeo.2006.09.008
- Chigira M, Duan F, Yagi H, Furuya T (2004) Using an airborne laser scanner for the identification of shallow landslides and susceptibility assessment in an area of ignimbrite overlain by permeable pyroclastics. *Landslides* 3:203–209. doi:10.1007/s10346-004-0029-x
- Colesanti C, Ferretti A, Prati C, Rocca F (2003) Monitoring landslides and tectonic motions with the permanent scatterers technique. *Eng Geol* 68:3–14. doi:10.1016/S0013-7952(02)00195-3
- Corsini A, Borgatti L, Coren F, Vellico M (2007) Use of multitemporal airborne LiDAR surveys to analyse post-failure behaviour of earthslides. *Can J Remote Sens* 33(2):116–120
- Corsini A, Cervi F, Daehne A, Ronchetti F (2009) Coupling geomorphic field observation and LIDAR derivatives to map complex landslides. In: Malet JP, Remaître A, Bogaard T (eds) Landslides processes—from geomorphologic mapping to dynamic modeling, proceedings of the landslide processes conference, 6–7 February 2009, Strasbourg
- Cruden DM, Varnes DJ (1996) Landslides investigation and mitigation, transportation research board. In: Turner AK, Schuster RL (eds) Landslide types and process, National Research Council, National Academy Press, Special Report 247:36–75
- Dallaire EE (1974) Electronic distance measuring revolution well under way. *Civil Eng* 44(10):66–71
- Derron MH, Jaboyedoff M (2010) Preface to the special issue. In: LIDAR and DEM techniques for landslides monitoring and characterization. *Nat Hazards Earth Syst Sci* 10:1877–1879
- Derron MH, Blikra LH, Jaboyedoff M (2005) High resolution digital elevation model analysis for landslide hazard assessment (Åkerneset, Norway). In: Senneset K, Flaate K, Larsen JA (eds) Landslide and avalanches, ICFL, pp 101–106
- Dewitte O, Jasselette J-C, Cornet Y, Van Den Eeckhaut M, Collignon A, Poesen J, Demoulin A (2008) Tracking landslide displacements by multi-temporal DTMs: a combined aerial stereophotogrammetric and LIDAR approach in western Belgium. *Eng Geol* 99:11–22. doi:10.1016/j.enggeo.2008.02.006
- Dietrich WE, Bellugi D, Real de Asua R (2001) Validation of the shallow landslide model, SHALSTAB, for forest management. In: Wigmosta MS, Burges SJ (eds) Land use and watersheds: human influence on hydrology and geomorphology in urban and forest areas, *Water Science and Application*, 2:195–227
- Dunning S, Massey C, Rosser N (2009) Structural and geomorphological features of landslides in the Bhutan Himalaya derived from terrestrial laser scanning. *Geomorphology* 103:17–29. doi:10.1016/j.geomorph.2008.04.013
- Duong H (2006) Full waveform analysis: Icesat laser data for land cover classification. In: ISPRS commission VII mid-term symposium “remote sensing: from pixels to processes”, pp 30–35
- Fardin N, Feng Q, Stephansson O (2004) Application of a new in situ 3D laser scanner to study the scale effect on the rock joint surface roughness. *Int J Rock Mech Min Sci* 41:329–335. doi:10.1016/S1365-1609(03)00111-4
- Fell R, Corominas J, Bonnard C, Cascini L, Leroi E, Savage WZ (2008) Guidelines for landslide susceptibility, hazard and risk zoning for land use planning. *Eng Geol* 102:85–89. doi:10.1016/j.enggeo.2008.03.022
- Feng Q, Sjögren P, Stephansson O, Jing L (2001) Measuring fracture orientation at exposed rock faces by using a non-reflector total station. *Eng Geol* 59:133–146. doi:10.1016/S0013-7952(00)00070-3
- Fernández O (2005) Obtaining a best fitting plane through 3D georeferenced data. *J Struct Geol* 27:855–858. doi:10.1016/j.jsg.2004.12.004

- Frattoni P, Crosta G, Carrara A, Agliardi F (2008) Assessment of rockfall susceptibility by integrating statistical and physically-based approaches. *Geomorphology* 94:419–437. doi:10.1016/j.geomorph.2006.10.037
- Froese C, Moreno F, Jaboyedoff M, Cruden DM (2009) 25 years of movement monitoring on South Peak, Turtle Mountain: understanding the hazard. *Can Geotech J* 46:256–269. doi:10.1139/T08-121
- Fruneau B, Achache J, Delacourt C (1996) Observation and modelling of the Saint-Étienne-de-Tinée landslide using SAR interferometry. *Tectonophysics* 265(3–4):181–190. doi:10.1016/S0040-1951(96)00047-9
- Glenn NF, Streutker DR, Chadwick DJ, Thackray GD, Dorsch SJ (2006) Analysis of LiDAR-derived topographic information for characterizing and differentiating landslide morphology and activity. *Geomorphology* 73:131–148. doi:10.1016/j.geomorph.2005.07.006
- Gordon S, Lichti D, Stewart M (2001) Application of a high-resolution, ground-based laser scanner for deformation measurements. In: *Proceedings of the 10th international FIG symposium on deformation measurements*, Orange, California, USA, 19–22 March 2001, pp 23–32
- Günther A (2003) SlopeMap: programs for automated mapping of geometrical and kinematical properties of hard rock hill slopes. *Comput Geosci* 29(7):865–875. doi:10.1016/S0098-3004(03)00086-4
- Guzzetti F, Reichenbach P, Wieczorek GF (2003) Rockfall hazards and risk assessment in the Yosemite Valley, California, USA. *Nat Hazards Earth Syst Sci* 3:491–503. doi:10.5194/nhess-3-491-2003
- Habib A (2008) Accuracy, quality assurance and quality control of LIDAR data, Chap 9. In: Shan J, Toth CK (eds) *Topographic laser ranging and scanning: principles and processing*. CRC Press, Taylor & Francis, pp 269–294
- Haneberg WC (2007) Directional roughness profiles from three-dimensional photogrammetric or laser scanner point clouds. In: Eberhardt E, Stead D, Morrison T (eds) *Rock mechanics: meeting society's challenges and demands. Proceedings of the 1st Canada—US rock mechanics symposium*, Vancouver, Canada, May 27–31, 2007, Taylor & Francis, pp 101–106
- Haneberg WC, Creighton AL, Medley EW, Jonas DA (2005) Use of LiDAR to assess slope hazards at the Lihir gold mine, Papua New Guinea. In: Hungr O, Fell R, Couture R, Eberhardt E (eds) *Proceedings of the international conference on landslide risk management*. Vancouver, Taylor & Francis Group, Supplementary Volume (CD), Canada
- Haneberg WC, Cole WF, Kasali G (2009) High-resolution lidar-based landslide hazard mapping and modeling, UCSF Parnassus Campus; San Francisco, USA. *Bull Eng Geol Environ* 68:263–276. doi:10.1007/s10064-009-0204-3
- Harding D (2008) Pulsed laser altimeter ranging techniques and implications for terrain mapping, Chap 5. In: Shan J, Toth CK (eds) *Topographic laser ranging and scanning: principles and processing*. CRC Press, Taylor & Francis, pp 173–194
- Haugerud RA, Harding DJ, Johnson SY, Harless JL, Weaver CS, Sherrod BL (2003) High-resolution lidar topography of the Puget Lowland, Washington—A Bonanza for earth science. *GSA Today* 13:4–10
- Heritage GL, Large ARG (2009) *Laser scanning for the environmental sciences*. Wiley-Blackwell, London
- Hiremagalur J, Yen KS, Akin K, Bui T, Lasky, TA, Ravani B (2007) Creating standards and specifications for the use of laser scanning in CalTrans projects. Technical report no F/CA/RI/2006/46, California Department of Transportation, US (www.ahmct.ucdavis.edu/images/AHMCT_LidarFinalReport.pdf)
- Höfle B, Vetter M, Pfeifer N, Mandlbürger G, Stötter J (2009) Water surface mapping from airborne laser scanning using signal intensity and elevation data. *Earth Surf Proc Land* 34(12):1635–1649. doi:10.1002/esp.1853
- Hoge FE, Swift RN, Frederick EB (1980) Water depth measurement using an airborne pulsed neon laser system. *Appl Opt* 19(6):871–883. doi:10.1364/AO.19.000871
- Horton P, Jaboyedoff M, Bardou E (2008) Debris flow susceptibility mapping at a regional scale. In: Locat J, Perret D, Turmel D, Demers D, Leroueil S (eds) *4th Canadian conference on geohazards: from causes to management*, Presse de l'Université Laval, pp 399–406
- Hungr O (2005) Classification and terminology. In: Jakob M, Hungr O (eds) *Debris-flow hazards and related phenomena*. Springer, Berlin/Heidelberg
- Ingensand H (2006) Metrological aspects in terrestrial laser-scanning technology. In: *Proceedings of the 3rd IAG/12th FIG symposium*, Baden, Austria
- Jaboyedoff M, Baillifard F, Couture R, Locat J, Locat P (2004a) New insight of geomorphology and landslide prone area detection using DEM. In: Lacerda WA, Ehrlich M, Fontoura AB, Sayao A (eds) *Landslides evaluation and stabilization*. Balkema, pp 191–197
- Jaboyedoff M, Baillifard F, Couture R, Locat J, Locat P (2004b) Toward preliminary hazard assessment using DEM topographic analysis and simple mechanical modeling by means of sloping local base level. In: Lacerda WA, Ehrlich M, Fontoura AB, Sayao A (eds) *Landslides evaluation and stabilization*. Balkema, pp 199–205

- Jaboyedoff M, Baillifard F, Philipossian F, Rouiller JD (2004c) Assessing the fracture occurrence using the “Weighted fracturing density”: a step towards estimating rock instability hazard. *Nat Hazards Earth Syst Sci* 4:83–93. doi:10.5194/nhess-4-83-2004
- Jaboyedoff M, Metzger R, Oppikofer T, Couture R, Derron MH, Locat J, Turmel D (2007) New insight techniques to analyze rock-slope relief using DEM and 3D-imaging clouds points: COLTOP-3D software. In: Eberhardt E, Stead D, Morrison T (eds) *Rock mechanics: meeting society’s challenges and demands*. Taylor & Francis, London, pp 61–68
- Jaboyedoff M, Pedrazzini A, Horton P, Loye A, Surace I (2008a) Preliminary slope mass movements susceptibility mapping using LIDAR DEM. In: *Proceedings of 61th Canadian geotechnical conference*, pp 419–426
- Jaboyedoff M, Oppikofer T, Minoia R, Locat J, Turmel D (2008b) Terrestrial LIDAR investigation of the 2004 rockslide along Petit Champlain street, Québec City (Québec, Canada). In: Locat J, Perret D, Turmel D, Demers D, Leroueil S (eds) *4th Canadian conference on geohazards: from causes to management*. Presse de l’Université Laval, pp 295–301
- Jaboyedoff M, Oppikofer T, Locat A, Locat J, Turmel D, Robitaille D, Demers D, Locat P (2009a) Use of ground-based LIDAR for the analysis of retrogressive landslides in sensitive clay and of rotational landslides in river banks. *Can Geotech J* 46:1379–1390. doi:10.1139/T09-073
- Jaboyedoff M, Couture R, Locat P (2009b) Structural analysis of Turtle Mountain (Alberta) using digital elevation model: toward a progressive failure. *Geomorphology* 103:5–16. doi:10.1016/j.geomorph.2008.04.012
- Jaboyedoff M, Pedrazzini A, Loye A, Oppikofer T, Güell i Pons M (2009c) Earth flow in a complex geological environment: the example of Pont Bourquin, Les Diablerets (Western Switzerland). In: Malet JP, Remaitre A, Bogaard T (eds) *Landslides processes—from geomorphologic mapping to dynamic modeling*, proceedings of the landslide processes conference, 6–7 February 2009, Strasbourg, France
- Jakob M (2005) Debris-flow hazard analysis. In: Jakob M, Hungr O (eds) *Debris-flow hazards and related phenomena*. Springer, Berlin/Heidelberg
- Janeras M, Navarro M, Arno G, Ruiz A, Kornus W, Talaya J, Barbera M, Lopez F (2004) LIDAR applications to rock fall hazard assessment in Vall de Nuria. 4th ICA Mountain Cartography Workshop, 30th September–2nd October 2004. Vall de Nuria, Catalonia, Spain
- Jibson RW (2006) The 2005 La Conchita, California, landslide. *Landslides* 3:73–78. doi:10.1007/s10346-005-0011-2
- Kamerman GW (1993) Laser radar (chapter 1). In: Fox CS (ed) *The infrared and electro-optical systems handbook*. Infrared information analysis center. Ann Arbor, Michigan, pp 1–76
- Kasai M, Ikeda M, Asahina T, Fujisawa K (2009) LiDAR-derived DEM evaluation of deep-seated landslides in a steep and rocky region of Japan. *Geomorphology* 113:57–69. doi:10.1016/j.geomorph.2009.06.004
- Keaton JR, DeGraff JV (1996) Surface observation and geologic mapping. In: Turner AK, Schuster RL (eds) *Landslide types and process*, National Research Council, National Academy Press, Special Report 247: 178–230
- Kemeny J, Post R (2003) Estimating three-dimensional rock discontinuity orientation from digital images of fracture traces. *Comput Geosci* 29:65–77. doi:10.1016/S0098-3004(02)00106-1
- Kemeny J, Turner K (2008) Ground based LIDAR. Rock slope Mapping and assessment. Technical report of the Central Federal Lands Highway Division US Department of Transportation FHWA-CFL/TD-08-006 (www.iaeg.info)
- Krabill WB, Collins JG, Link LE, Swift RN, Butler ML (1984) Airborne laser topographic mapping results. *Photogramm Eng Remote Sens* 50(6):685–694
- Krabill WB, Thomas RH, Martin CF, Swift RN, Frederick EB (1995) Accuracy of airborne laser altimetry over Greenland ice sheet. *Int J Remote Sens* 16(7):1211–1222. doi:10.1080/01431169508954472
- Krabill WB, Frederick EB, Manizade S, Martin CF, Sonntag J, Swift RN, Thomas R, Wright W, Yungel J (1999) Rapid thinning of parts of the southern Greenland ice sheet. *Science* 283:1522–1524. doi:10.1126/science.283.5407.1522
- Kurz TH, Buckley SJ, Howell JA, Schneider D (2008) Geological outcrop modeling and interpretation using ground based hyperspectral and laser scanning data fusion. *Int Arch Photogramm Remote Sens* 37(B8):1229–1234
- Lan H, Martin CD, Lim CH (2007) RockFall analyst: a GIS extension for three-dimensional and spatially distributed rockfall hazard modeling. *Comput Geosci* 33(2):262–279. doi:10.1016/j.cageo.2006.05.013
- Lato M, Diederichs M, Hutchinson DJ, Harrap R (2009) Optimization of LiDAR scanning and processing for automated structural evaluation of discontinuities in rockmasses. *Int J Rock Mech Min Sci* 46:194–199. doi:10.1016/j.ijrmmms.2008.04.007

- Lichti DD (2007) Error modelling, calibration and analysis of an AM-CW terrestrial laser scanner system. *ISPRS J Photogramm Remote Sens* 61:307–324. doi:10.1016/j.isprsjprs.2006.10.004
- Lichti DD, Jamtsho S (2006) Angular resolution of terrestrial laser scanners. *Photogramm Rec* 21:141–160. doi:10.1111/j.1477-9730.2006.00367.x
- Lichti D, Stewart M, Tsakiri M, Snow A (2000) Benchmark tests on a three-dimensional laser scanning system. *Geomat Res Australas* 72:1–24
- Lim M, Petley DN, Rosser NJ, Allison RJ, Long AJ, Pybus D (2006) Combined digital photogrammetry and time-of-flight laser scanning for monitoring cliff evolution. *Photogramm Rec* 20:109–129. doi:10.1111/j.1477-9730.2005.00315.x
- Lindenbergh R, Pfeifer N (2005) A statistical deformation analysis of two epochs of terrestrial laser data of a lock. In: *Proceedings of the 7th conference on optical 3D measurement techniques*, Vienna, Austria, pp 61–70
- Loye A, Jaboyedoff M, Pedrazzini A (2009) Identification of potential rockfall source areas at a regional scale using a DEM-based geomorphometric analysis. *Nat Hazards Earth Syst Sci* 9:1643–1653. doi:10.5194/nhess-9-1643-2009
- Manetti L, Steinmann G (2007) 3DeMoN ROBOVEC—integration of a new measuring instrument in an existing generic remote monitoring platform. In: *7th international symposium on field measurements in geomechanics*, September 2007, Boston, MA, USA, pp 24–27
- McKean J, Roering J (2004) Objective landslide detection and surface morphology mapping using high-resolution airborne laser altimetry. *Geomorphology* 57:331–351. doi:10.1016/S0169-555X(03)00164-8
- Miller B (1965) Laser altimeter may aid photo mapping. *Aviat Week Space Technol* 88(13):60–64
- Montserrat O, Crossetto M (2008) Deformation measurement using terrestrial laser scanning data and least squares 3D surface matching. *ISPRS J Photogramm Remote Sens* 63:142–154. doi:10.1016/j.isprsjprs.2007.07.008
- Montgomery DR, Schmidt KM, Greenberg HM, Dietrich WE (2000) Forest clearing and regional landsliding. *Geology* 28:311–314. doi:10.1130/0091-7613(2000)28<311:FCARL>2.0.CO;2
- Mueller R, Loew S (2009) Predisposition and Cause of the Catastrophic Landslides of August 2005 in Brienz (Switzerland). *Swiss J Geosci* 102(2):331–344. doi:10.1007/s00015-009-1315-3
- Oppikofer T (2009) Detection, analysis and monitoring of slope movements by high-resolution digital elevation models. PhD Thesis, Institute of Geomatics and Analysis of Risks, Faculty of Geosciences and Environment, University of Lausanne, Switzerland
- Oppikofer T, Jaboyedoff M, Keusen HR (2008) Collapse at the eastern Eiger flank in the Swiss Alps. *Nat Geosci* 1:531–535. doi:10.1038/ngeo258
- Oppikofer T, Jaboyedoff M, Blikra L, Derron MH (2009) Characterization and monitoring of the Åknes rockslide using terrestrial laser scanning. *Nat Hazards Earth Syst Sci* 9:1643–1653. doi:10.5194/nhess-9-1003-2009
- Pedrazzini A, Oppikofer T, Jaboyedoff M, Guell i Pons, M, Chantry R, Stampfli E (2010) Assessment of rockslide and rockfall problems in an active quarry: case study of the Arvel quarry (western Switzerland). In: *European rock mechanics symposium (EUROCK 2010)*, Lausanne, Switzerland. CRC Press, Leiden, pp 593–596
- Pesci A, Loddo F, Conforti D (2007) The first terrestrial laser scanner application over Vesuvius: High resolution model of a volcano crater. *Int J Remote Sens* 28(1):203–219. doi:10.1080/01431160500534473
- Pesci A, Teza G, Ventura G (2008) Remote sensing of volcanic terrains by terrestrial laser scanner: preliminary reflectance and RGB implications for studying Vesuvius crater (Italy). *Annals Geophys* 51:619–631
- Petrie G, Toth CK (2008) I. Introduction to laser ranging, profiling and scanning, II. Airborne and spaceborne laser profiles and scanners, III. Terrestrial laser scanners (chapters 1 to 3). In: Shan J, Toth CK (eds) *Topographic laser ranging and scanning: principles and processing*, CRC Press, Taylor & Francis
- Prokop A, Panholzer H (2009) Assessing the capability of terrestrial laser scanning for monitoring slow moving landslides. *Nat Hazards Earth Syst Sci* 9:1921–1928. doi:10.5194/nhess-9-1921-2009
- Roering JJ, Stimely LL, Mackey BH, Schmidt DA (2009) Using DInSAR airborne LIDAR, and archival air photos to quantify landsliding and sediment transport. *Geophys Res Lett* 36:L19402. doi:10.1029/2009GL040374
- Romana M (1993) A geomechanical classification for slopes: slope mass rating. In: Hudson JA (ed) *Comprehensive rock engineering*, vol 3. Pergamon Press, Oxford, pp 553–573
- Rosser NJ, Petley DN, Lim M, Dunning SA, Allison RJ (2005) Terrestrial laser scanning for monitoring the process of hard rock coastal cliff erosion. *Q J Eng Geol Hydrogeol* 38:363–375. doi:10.1144/1470-9236/05-008

- Rosser NJ, Lim N, Petley DN, Dunning S, Allison RJ (2007) Patterns of precursory rockfall prior to slope failure. *J Geophys Res* 112(F4). doi:10.1029/2006JF000642
- Rowlands KA, Jones LD, Whitworth M (2003) Landslide laser scanning: a new look at an old problem. *Q J Eng Geol Hydrogeol* 36:155–157. doi:10.1144/1470-9236/2003-08
- SafeLand deliverable 4.1 (2010) Review of techniques for landslide detection, fast characterization, rapid mapping and long-term monitoring. In: Michoud C, Abellán A, Derron M-H, Jaboyedoff M (eds) SafeLand European project. Available at <http://www.safeland-fp7.eu>
- Savage WZ, Godt JW, Baum RL (2003) A model for spatially and temporal distributed shallow landslide initiation by rainfall infiltration. In: Rickenmann D, Chen C (eds) Debris-flow hazards mitigation: mechanics, prediction, and assessment. Millpress, Rotterdam
- Scheidt C, Rickenmann D, Chiari M (2008) The use of airborne LiDAR data for the analysis of debris flow events in Switzerland. *Nat Hazards Earth Syst Sci* 8:1113–1127. doi:10.5194/nhess-8-1113-2008
- Schulz WH (2007) Landslide susceptibility revealed by LIDAR imagery and historical records, Seattle, Washington. *Eng Geol* 89:67–87. doi:10.1016/j.enggeo.2006.09.019
- Shan J, Toth K (2008) Topographic laser ranging and scanning: principles and processing. CRC Press, Taylor & Francis Group, LLC, UK
- Shepherd EC (1965) Laser to watch height. *New Scientist* 1:33
- Singhroy V (2009) Satellite remote sensing applications for landslide detection and monitoring. In: Sassa K, Canuti P (eds) Landslides—disaster risk reduction. Springer, Berlin/Heidelberg, pp 143–158
- Slob S, Hack R (2004) 3D terrestrial laser scanning as a new field measurement and monitoring technique. In: Engineering geology for infrastructure planning in Europe: a European perspective, Lectures Notes in Earth Sciences, Springer, Berlin/Heidelberg, 104:179–189
- Slob S, Hack H, Turner AK (2002) An approach to automate discontinuity measurements of rock faces using laser scanning techniques. In: Dinid da Gama C, Riberia e Sousa L (eds) Proceedings of ISRM EUROCK 2002, 25–28 November 2002, Funchal, Portugal, Sociedade Portuguesa de Geotecnia, pp 87–94
- Soeters R, van Westen CJ (1996) Slope stability: recognition, analysis and zonation. In: Turner AK, Schuster RL (eds) Landslides investigation and mitigation, Transportation Research Board, National Research Council, National Academy Press, Special Report 247:129–177
- Squarzone C, Delacourt C, Allemand P (2003) Nine years of spatial and temporal evolution of the La Valette landslide observed by SAR interferometry. *Eng Geol* 68:53–66. doi:10.1016/S0013-7952(02)00198-9
- Staley DM, Waskiewicz TA, Blaszczyński JS (2006) Surficial patterns of debris flow deposition on alluvial fans in Death Valley, CA using airborne laser swath mapping data. *Geomorphology* 74:152–163. doi:10.1016/j.geomorph.2005.07.014
- Stolz A, Huggel C (2008) Debris flows in the Swiss National Park: the influence of different flow models and varying DEM grid size on modeling results. *Landslides* 5:311–319. doi:10.1007/s10346-008-0125-4
- Stow R (1996) Application of SAR interferometry to the imaging and measurement of neotectonic movement applied to mining and other subsidence/downward modeling. In: Fringe 96 proceedings ESA workshop on applications of ERS SAR interferometry, Zurich, Switzerland
- Sturzenegger M, Stead D (2009) Quantifying discontinuity orientation and persistence on high mountain rock slopes and large landslides using terrestrial remote sensing techniques. *Nat Hazards Earth Syst Sci* 9:267–287. doi:10.5194/nhess-9-267-2009
- Sturzenegger M, Stead D, Froese C, Moreno F, Jaboyedoff M (2007a) Ground-based and airborne LiDAR for structure mapping of a large landslide: the Frank Slide. In: Eberhardt E, Stead D, Morrison T (eds) Rock mechanics: meeting society's challenges and demands. Taylor & Francis, London, pp 925–932
- Sturzenegger M, Yan M, Stead D, Elmo D (2007b) Application and limitations of ground-based laser scanning in rock slope characterization. In: Eberhardt E, Stead D, Morrison T (eds) Proceedings of the first Canadian US rock mechanics symposium. Taylor & Francis, London, pp 29–36
- Tarchi D, Casagli N, Fanti R, Leva DD, Luzi G, Pasuto A, Pieraccini M, Silvano S (2003) Landslide monitoring by using ground-based SAR interferometry: an example of application to the Tessina landslide in Italy. *Eng Geol* 68:15–30. doi:10.1016/S0013-7952(02)00196-5
- Tatone BS, Grasselli G (2009) A method to evaluate the three-dimensional roughness of fracture surfaces in brittle geomaterials. *Rev Sci Instrum* 80(12). doi:10.1063/1.3266964
- Teza G, Galgano A, Zaltron N, Genevois R (2007) Terrestrial laser scanner to detect landslide displacement fields: a new approach. *Int J Remote Sens* 28:3425–3446. doi:10.1080/01431160601024234
- Teza G, Pesci A, Genevois R, Galgano A (2008) Characterization of landslide ground surface kinematics from terrestrial laser scanning and strain field computation. *Geomorphology* 97:424–437. doi:10.1016/j.geomorph.2007.09.003

- Theules JI, Loye A, Liébault F, Laigle D, Jaboyedoff M (2009) Sediment budget of a debris flow event in the French Prealps. American Geophysical Union Fall Meeting 2009
- Travelletti J, Oppikofer T, Delacourt C, Malet J, Jaboyedoff M (2008) Monitoring landslide displacements during a controlled rain experiment using a long-range terrestrial laser scanning (TLS). *Int Arch Photogramm Remote Sens* 37(B5):485–490
- Trevisani S, Cavalli M, Marchi L (2009) Variogram maps from LiDAR data as fingerprints of surface morphology on scree slopes. *Nat Hazards Earth Syst Sci* 9:129–133. doi:10.5194/nhess-9-129-2009
- Vallet J, Skaloud J (2004) Development and experiences with a fully-digital handheld mapping system operated from a helicopter. *Int Arch Photogramm Remote Sens* 35(B5):791–796
- Van Den Eeckhaut M, Poesen J, Verstraeten G, Vanacker V, Nyssen J, Moeyersons J, van Beek LPH, Vandekerckhove L (2007) Use of LIDAR-derived images for mapping old landslides under forest. *Earth Surf Proc Land* 32:754–769. doi:10.1002/esp.1417
- Van Westen CJ, Van Asch TWJ, Soeters R (2006) Landslide hazard and risk zonation—why is it still so difficult? *Bull Eng Geol Environ* 65:67–184. doi:10.1007/s10064-005-0023-0
- Viero A, Teza G, Massironi M, Jaboyedoff M, Galgaro A (2010) Laser scanning-based recognition of rotational movements on a deep seated 2 gravitational instability: The Cinque Torri case (North-Eastern Italian Alps). *Geomorphology* 122:191–204. doi:10.1016/j.geomorph.2010.06.014
- Voegtle T, Schwab I, Landes T (2008) Influences of different materials on the measurement of a Terrestrial Laser Scanner (TLS). In: Proceedings of the XXI congress, the international society for photogrammetry and remote sensing, ISPRS2008, vol XXXVII, Commission V, 3–11 July 2008, Beijing, China, pp 1061–1066
- Wehr A, Lohr U (1999) Airborne laser scanning—an introduction and overview. *ISPRS J Photogramm Remote Sens* 54:68–82. doi:10.1016/S0924-2716(99)00011-8

IIASA's Contribution for the Integrated Disaster Risk Management

International Institute for Applied Systems Analysis (IIASA)

“Risk” has been part of IIASA’s activity profile since the Institute’s foundation. This theme is critical, as the prospect of unintended consequences from technological, environmental, and social policies continues to stir intense debates that shape the future of societies across the world. Relying on probability calculations, risk became a theoretical focus designed to bolster a scientific, mathematically-based approach toward uncertainty and risk management.

Early controversies in the 1970’s and 1980’s on nuclear power, liquid natural gas storage, and hazardous waste disposal – all early research topics at IIASA – made clear to the expert community, however, that probabilistic calculations of risk, although essential to the debates, are not sufficient to settle issues of public acceptance. In response, IIASA has pioneered research on risk perception (Otway and Thomas 1982), “objective” versus “subjective” assessments (Kunreuther and Linnerooth 1982), systemic cultural biases (Thompson 1990) and risk and fairness (Linnerooth-Bayer 1999).

As a critical part of this history, IIASA is widely recognized for its advancements in stochastic and dynamic systems optimization (e.g., Ermoliev 1988), treating endogenous uncertainty and catastrophic risks in decision-making processes (reviewed in Amendola et al. 2013), and advancing statistical methods for probabilistic assessment (e.g., Pflug and Roemisch 2007). The hallmark of IIASA’s risk research is the integration of these multiple strands of mathematical and social science research.

One important in-house model taking an integrated perspective in the RISK program at IIASA is the so-called CatSim model (Catastrophe simulation), which focuses on the government and its fiscal risk in the face of natural disaster events. It is a mainstay of the Program’s methodological and policy research and was first developed to aid public officials in developing countries to assess catastrophic risks from natural hazards and analyze options to enhance their country’s financial resiliency. The model takes a “systems approach” by integrating catastrophe risk modeling with financial and economic modeling. The model enables users to explore the impact of traditional and novel financial instruments, including reinsurance and catastrophe bonds, terms of the costs of reducing the risk of a financing gap. CatSim has proven useful in other contexts as well, e.g., for allocating climate adaptation and development funds to support disaster resilience in the most vulnerable countries. Based on the model framework, assessed exposure and financial vulnerability to extreme weather events on the global scale can be performed too (Hochrainer-Stigler et al. 2014)

Beyond modeling, IIASA has pioneered the exploration of novel financing instruments to provide safety nets to vulnerable communities and governments facing climate risks (Linnerooth-Bayer, J. & Amendola 2000). These instruments now feature prominently on the agendas of development organizations and NGOs, and they are also gaining attention in the climate change adaptation community (Linnerooth-Bayer and Hochrainer-Stigler, 2015). In an early influential policy paper, IIASA scientists argued

that donor-supported risk-transfer programs, some based on novel instruments, would leverage limited disaster-aid budgets and free recipient countries from depending on the vagaries of post-disaster assistance (Linnerooth-Bayer et al. 2005).

As a final mention, IIASA's contributions to integrated disaster risk management have included the design and implementation of new forms of bottom-up governance, most notably stakeholder processes which co-design policy options with experts, and explicitly recognize large value differences.

References

Amendola A, Ermolieva T, Linnerooth-Bayer J, Mechler R (Eds) (2013). *Integrated Catastrophe Risk Modeling: Supporting Policy Processes*. Springer, Dordrecht, Netherlands.

Ermoliev Y (ed) (1988). *Numerical techniques for stochastic optimization*, Springer, New York.

Hochrainer-Stigler S, Mechler R, Pflug GC, Williges K. (2014) Funding public adaptation to climate-related disasters. Estimates for a global fund. *Global Environmental Change*, 25:87-96.

Linnerooth-Bayer J (1999). Climate Change and Multiple Views of Fairness. In: Fair Weather? Equity Concerns in Climate Change, FL Toth (Ed), Earthscan Publications Ltd., London, pp. 44-65.

Linnerooth-Bayer, J. & Amendola, A. Global Change, Natural Disasters and Loss-sharing: Issues of Efficiency and Equity. Geneva Pap Risk Insur Issues Pract (2000) 25: 203. doi:10.1111/1468-0440.00060

Linnerooth-Bayer, J. and Hochrainer-Stigler, S. (2015). Financial Instruments for Disaster Risk Management and Climate Change Adaptation. *Climatic Change*, 133(1): 85-100. DOI: 10.1007/s10584-013-1035-6.

Kunreuther H and Linnerooth-Bayer J (1983). *Risk Analysis and Decision Processes: The Siting of Liquefied Energy Gas Facilities in Four Countries*, Springer Verlag, Berlin.

Otway H and Thomas K. (1982) Reflections on Risk Perception and Policy. *Risk Analysis*, 2:69-82.

Pflug G, Römisch W (2007). *Modeling, Measuring and Managing Risk*. World Scientific.

Thompson M, Ellis R, Wildavsky A (1990). *Cultural Theory*. Westview Press.

Collaboration between DPRI and IIASA and establishment of IDRiM Society

The move to set up the IDRiM Society was based on the success of a series of nine Forums on Integrated Disaster Risk Management organized by the Disaster Prevention Research Institute (DPRI) of Kyoto University and the International Institute for Applied Systems Analysis (IIASA) located in Austria. The first forum was in 2001 which was the starting point for cross-collaboration with the aim to strengthen a new disciplinary area of integrated disaster risk management. As indicated, after eight annual conferences and active interactions under this initiative, this led ultimately to the formation of the IDRiM Society in 2009 which officially was launched on October 15, 2009 in Kyoto, Japan, at the 9th IIASA-DPRI Forum on Integrated Disaster Risk Management. The launching of the IDRiM Society was promoted also by many national and international organizations including Beijing Normal University, International Institute of Earthquake Engineering and Seismology (IIEES), National Research Institute for Earth Science and Disaster Prevention (NIED), the United Nations International Strategy for Disaster Reduction (UN/ISDR), the Joint Research Centre of the European Commission (JRC/EC) and other organizations. The IDRiM Society was enthusiastically welcomed and its Charter approved by more than 100 international experts, practitioners, and individuals from more than 20 different countries working in the disaster risk management field. Since then, 7 international conferences on Integrated Disaster Risk Management were held around the world, including Austria, USA, China, the U.K., Canada, India and Iran.

Past IIASA-DPRI Conferences

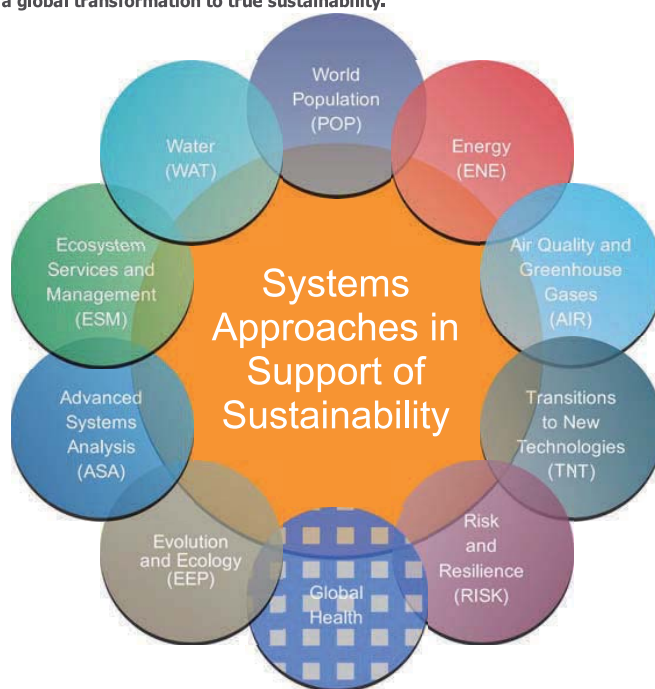
<p>9th IIASA-DPRI Conference on Integrated Disaster Risk Management: “Scientific Challenges in Implementing Integrated Disaster Risk Management in a Changing World.”</p>	<p>Kyoto Japan.</p>	<p>12-16 October 2009</p>
<p>8th IIASA-DPRI Conference on Integrated Disaster Risk Management: “Integration and Multi-disciplinarity.” .</p>	<p>Induno- Olona Italy</p>	<p>1-2 September 2008</p>
<p>7th IIASA-DPRI Conference on Integrated Disaster Risk Management: “Coping with Disasters: Global Challenge for the 21st Century and Beyond.”</p>	<p>Stresa Italy</p>	<p>19- 21September 2007</p>
<p>6th IIASA-DPRI Conference on Integrated Disaster Risk Management: “Risk and Challenges for Business and Industry.”</p>	<p>Istanbul Turkey</p>	<p>13-17 August 2006</p>
<p>5th IIASA-DPRI Conference on Integrated Disaster Risk Management: “Innovations in Science and Policy.”</p>	<p>Beijing China</p>	<p>14-18 September 2005</p>
<p>4th IIASA-DPRI Conference on Integrated Disaster Risk Management: “Challenges and Implementation.”</p>	<p>Ravello Italy</p>	<p>3-7 July 2004</p>
<p>3rd IIASA-DPRI Conference on Integrated Disaster Risk Management: “Coping with Regional Vulnerability.”</p>	<p>Kyoto Japan</p>	<p>3-5 July 2003</p>
<p>2nd IIASA-DPRI Conference on Integrated Disaster Risk Management: “Megacity Vulnerability and Resilience.”</p>	<p>Laxenbourg Austria</p>	<p>29-31 July 2002</p>
<p>1st IIASA-DPRI Conference on Integrated Disaster Risk Management: “Reducing Socio-Economic Vulnerability.”</p>	<p>Laxenbourg Austria</p>	<p>1-4 August 2001</p>

Annual Conferences of IDRIIM Society

<p>The 1st Conference of the International Society for Integrated Disaster Risk Management (IDRIIM2010) : Sharing IDRIIM experiences under different socio-economic and cultural contexts</p>	<p>University Natural Resources and applied Life Sciences Vienna, Austria</p>	<p>1 – 4, September 2010.</p>
<p>The 2nd Conference of the International Society for Integrated Disaster Risk Management (IDRIIM2011): Reframing Disasters and Identifying Deficits in Risk Governance</p>	<p>the University of Southern California (USC), Los Angeles, United States</p>	<p>14-16 July 2011</p>
<p>The 3rd Conference of the International Society for Integrated Disaster Risk Management (IDRIIM2012) : From surprise to Rationality: Managing unprecedented Large-Scale Disasters</p>	<p>Beijing Normal University Beijing, China</p>	<p>7-9 September 2012</p>
<p>The 4th Conference of the International Society for Integrated Disaster Risk Management (IDRIIM2013): From Opportunity to Action: Bridging the Gap between Disaster Reduction and Development through Science(s), Technology and People Centred Actions</p>	<p>Northumbria University, Newcastle upon Tyne, UK</p>	<p>4-6 September 2013</p>
<p>The 5th Conference of the International Society for Integrated Disaster Risk Management (IDRIIM2014): Building Disaster Resilient Communities</p>	<p>Western University, London, Ontario, Canada</p>	<p>30 October – 1 November 2014</p>
<p>The 6th Conference of the International Society for Integrated Disaster Risk Management (IDRIIM2015): Disaster Risk Reduction: Challenges and Opportunities for Sustainable Growth</p>	<p>Scope Convention Centre, New Delhi, India</p>	<p>28 - 30 October 2015</p>
<p>The 7th Annual Conference of the International Society for Integrated Disaster Risk Management (IDRIIM 2016): Disasters and Development: Towards a Risk Aware Society</p>	<p>Hotel Abbasi, Isfahan, Iran</p>	<p>1 – 3 October 2016</p>

Research Programs

There are currently nine IIASA research programs carrying out research into the dynamics of global change. These programs use holistic approaches and effective, interdisciplinary collaborations to identify the multiple solutions needed to bring about a global transformation to true sustainability.



The IIASA research programs are shown in the interactive diagram above. The outer circles show the current nine research programs and the proposed new Global Health Program. The inner circle represents integrated research activities at IIASA. Importantly, the diagram shows how each of the research programs intersect and contribute to these integrated projects, an increasing focus of IIASA research.

In addition to contributing to large-scale integrated projects and cross-cutting initiatives, each research program is responsible for undertaking research and maintaining and developing core competencies in their areas of expertise. It must be stressed that the IIASA research programs are not discipline-based, but are themselves interdisciplinary and house a diversity of scientific expertise, across the natural (e.g., biology, chemistry), physical (e.g., physics, mathematics, engineering), and social sciences (e.g., economics, demography, geography) that together focus on a particular research theme.

RESEARCH AT IIASA

- » Research Overview
- » Impact of IIASA research

RESEARCH FOUNDATIONS

- » IIASA Strategic Plan 2011-2020
- » IIASA Research Plan 2016-2020
- » IIASA Highlights 2011-2015
- » IIASA Annual Report
- » IIASA Scientific Update

MODELS AND TOOLS

- » Overview of analytical tools used in IIASA research

RESEARCH PROJECTS

- » Overview of current research projects

RESEARCH PARTNERS

- » Overview of current research partners

ACHIEVEMENTS

- » Impact of IIASA research

PUBLICATIONS

- » **Yillia P** (2016)
Water-energy-food nexus: framing the opportunities, challenges and synergies for implement...
- » Palokangas T (2016)
Regulation versus subsidies in conservation with self-interested policy maker
- » **Crespo Cuaresma J**, Feldkircher M, Huber F (2016)
Forecasting with global vector autoregressive models: a Bayesian approach



Risk and Resilience

The Risk and Resilience (RISK) Program aims to better understand the risks to economic, ecological, and social systems arising from global change and to help transform the ways in which societies manage them.



Woman with Orange Umbrella. Muddy Road China © Pavliha | iStock

Society needs to make effective responses to the risks associated with global change. To that end, scientists must understand the systemic and dynamic linkages of environmental, social, and economic risks and how these are impacted by different policy measures. This will enable risk management and governance systems to be improved in order to facilitate long-term sustainable development.

Systems analysis, risk modeling, and transformative governance are fundamental to the mission of Risk & Resilience (RISK). The Program examines environmental and socioeconomic risks and policy options across multiple spatial and temporal scales to provide an analytical foundation for improved management and governance of natural disasters, address climate change, and ease the technological and ecological transitions to sustainability.

The Program has four specific goals:

- To advance the conceptual and methodological development of risk and vulnerability research
- To carry out selected risk and vulnerability assessments
- To carry out integrative stakeholder-led case studies, and
- To develop interactive tools for training on vulnerability and adaptation.

The program builds on the methodologies, activities and experience gained from the previous IIASA Risk, Modeling and Society (RMS) and Risk, Policy and Vulnerability Programs. It integrates across other IIASA programs and links closely with the vulnerability/resilience research communities.



Risk analysis and modeling

The Risk Analysis and Modeling research theme investigates how to manage the risks arising in socio-ecological systems, including risks from climate extremes and other types of hazards. [More](#)



Risk Management and Adaptation

This thematic research area focuses on developing policy-relevant methodological insight for informing risk management and adaptation strategies; the aim of which is to support the multi-scale integration of agendas on risk management, climate change adaptation and sustainable socio-economic development. [More](#)



Governance in Transition

The Governance in Transition research theme analyzes how governance structures shape decisions and subsequent outcomes by building on and contributing to research on decision-making processes, public acceptance, risk perception, cognitive biases, and cultural perspectives, as well as participatory governance design. [More](#)



CONTACT DETAILS

Joanne Linnerooth-Bayer
Acting Program Director
Risk and Resilience
YSSP Dean
Young Scientists Summer Program



CONTACT DETAILS

Reinhard Mechler
Deputy Program Director
Risk and Resilience

SUBSCRIBE TO THE IIASA NEWSLETTER

NEWS

ASA researchers participated in the international workshop on Heterogeneous Dynamic Models of Economic and Population Systems

02 December 2016

Study maps the climate impact of agriculture

29 November 2016

Executive Assistant (m/f) to the Director General/CEO

29 November 2016

From Kobe to Sendai.

Tracing progress in risk discourse and analysis for informing risk management and climate adaptation.

Reinhard Mechler

Deputy Program Director, Risk and Resilience Program, IIASA

Risks associated with natural disasters and climate change rank high among global socio-economic sustainability challenges. These risks, the outcomes of coupled socio-ecological systems' interactions, can lead to large adverse developmental consequences (erosion of livelihoods, increase in poverty, loss of human, economic, environmental and social assets, migration) and have been at the centre of attention of disaster management and climate negotiations. Concepts, methodologies, methods and metrics associated with risk have been of fundamental and increasing saliency for informing policy and action on these interlinked challenges. The talk traces the evolution in conceptualisation, modelling and assessment as well as policy related to risk analysis for the examination and management of disaster and climate risks. Building on work done by the presenter with many colleagues, the central line of argumentation of the talk is to show how thinking and analysis on disaster and climate-related risk over the last few years has seen important evolution towards broad-based debate concurrently encompassing epistemological, instrumental, reflective and participative discourses, thus providing great potential for informing action on key challenges associated with extreme event risks across multiple scales along the science-society interface.

Dr. Reinhard Mechler

Personal Profile

Reinhard Mechler has more than 15 years of experience working on the economics of disaster risk, risk modelling and climate change. He currently is deputy director of the 'Risk, Policy, Vulnerability' research program at the International Institute for Applied Systems Analysis (IIASA) and a senior lecturer at the University for Economics and Business in Vienna. Specific interests of his include catastrophe risk modelling, the impacts of extreme events and climate change on development, the use of novel risk financing mechanisms for sharing disaster risks, and the assessment of the efficiency and equity of climate change response measures. He was a lead author on IPCC's special report on adaptation to extreme events (SREX) and is a lead author on the chapter on the Economics of Adaptation in the upcoming 5th assessment report. He has been leading and contributing to many projects for international and donor organizations including the European Commission, DFID, CIDA, the UN, ProVention Consortium, World Bank, Asian Development Bank, Inter-American Development Bank, Caribbean Development Bank and GIZ.

Areas of expertise

Economics of natural disaster risk management and adaptation, disaster risk sharing instruments and insurance, systems modelling, climate change adaptation and mitigation strategies, development economics, ecological economics.

Editorial boards

Climate Risk Management, Mitigation and Adaptation Strategies for Global Change, @Risk

Qualifications

2003. Ph.D. Economics University of Karlsruhe, Germany
1998 Diploma in Economics, University of Heidelberg, Germany
1993-1994 Academic year, University of Massachusetts, Amherst, USA
B.A. equivalents Economics 1995, Mathematics 1992, English 1992

Positions held

2013 to present Deputy program leader "Risk, Policy, Vulnerability," IIASA
2006 to 2013 Leader research group "Disasters, Adaptation and Development," IIASA
2009 to present Senior lecturer at Vienna University of Economics and Business
1999 to 2006 Research scholar, IIASA
1998 to 2001 Ph. D. researcher, University of Karlsruhe
1994 to 1998 Research Assistant, Centre for European Economic Research (ZEW), Mannheim

Languages

English	Fluent
German	Mother tongue
Spanish	Basic
French	Basic
Italian	Basic

Peer-reviewed publications

- Jongman, B., Hochrainer-Stigler, S., Feyen, L., Aerts, J., Mechler, R., Botzen, W., Bouwer, L., Pflug, G., Rojas, R., Ward, P. (2014). Reply to 'Statistics of flood risk.' *Nature Climate Change*, 4:844-845
- Mechler R. & Bouwer, L. Reviewing trends and projections of global disaster losses and climate change: Is vulnerability the missing link? *Climatic Change*, Published online 12 August 2014.
- Mochizuki, J., Mechler, R., Hochrainer-Stigler, S., Keating, A., Williges, K. (2014). Revisiting the "disaster and development" debate - Toward a broader understanding of macroeconomic risk and resilience. *Climate Risk Management*, Article in press (Published online 22 May 2014).
- Scolobig, A., Mechler, R., Komendantova, N., Liu, W., Schroeter, D., Patt, A. (2014). The co-production of scientific advice and decision making under uncertainty: Lessons from the 2009 L'Aquila earthquake, Italy. *GRF Davos Planet@Risk*, 2(2):71-76
- Mechler, R. Bouwer, L., Linnerooth-Bayer, J., Hochrainer-Stigler, S., Aerts, J., Surminski, S. (2014). Managing unnatural disaster risk from climate extremes. *Nature Climate Change* 4, 235-237
- Jongman, B., Hochrainer-Stigler, S., Feyen, L., Aerts, J., Mechler, R., Botzen, W., Bouwer, L., Pflug, G., Rojas, R., Ward, P. (2014). Increasing stress on disaster risk finance due to large floods. *Nature Climate Change* 4, 264-268
- Scricciu, S. Chalabi, Z., Belton, V. Mechler, R. (2014). Advancing Methodological Thinking and Practice for Development-Compatible Climate Policy Planning. *Mitigation and Adaptation Strategies for Global Change* doi.org/10.1007/s11027-013-9538-z.
- Hochrainer-Stigler, S., Mechler, R., Pflug, G., Williges, K. (2014). Funding Public Adaptation to Climate-related Disasters. Estimates for a Global Climate Fund. *Global Environmental Change* 25, 87-96
- Mechler, R., Hochrainer-Stigler, S. (2014). Revisiting Arrow-Lind: Managing sovereign disaster risk. *Journal of Natural Resources Policy Research* 6 (1): 93-100
- Kundzewicz, Z.W., Kanae, S., Seneviratne, S.I., Handmer, J., Nicholls, N., Peduzzi, P., Mechler, R. Bouwer, L., Arnell, N., Mach, K., Muir-Wood, R. Brakenridge, G.R., Kron, W., Benito, G., Honda, Y., Takahashi, K., Sherstyukov, B. (2013). Flood risk and climate change – global and regional perspectives. *Hydrological Sciences Journal* 59 (1): 1-28
- Kull, D., Mechler, R. Hochrainer-Stigler, S. (2013). Probabilistic Cost-Benefit Analysis of Disaster Risk Management in a Development Context. *Disasters* 37(3): 374-400.
- Rezai, A. Taylor, L., Mechler, R. (2013). Ecological Climate Economics. *Climate Policy and Economic Growth. Ecological Economics* 85:69-76.
- Scricciu, S., Rezai, A., Mechler, R. (2013). On the economic foundations of green growth discourses: the case of climate change mitigation and macroeconomic dynamics in economic modeling. *WIREs Energy and Environment* 2 (3): 251-268.
- Michel-Kerjan, E., Hochrainer-Stigler, S., Kunreuther, H., Linnerooth-Bayer, Mechler, R. Muir-Wood, R., Ranger, N., Vaziri, P., and Young, M. (2012). Catastrophe Risk Models for Evaluating Disaster Risk Reduction Investments in Developing Countries. *Risk Analysis* 33(6): 984-999
- Lal, P., Mitchell, T., Aldunce, P., Auld, H., Mechler, R. Miyan, A., Romano, L., Zakaria, S. (2012). Chapter 6. National Systems for Managing the Risks from Climate Extremes and Disasters. In: Intergovernmental Panel on Climate Change Special Report on Managing the Risks of Extreme Events and Disasters to Advance Climate Change Adaptation [Field, C. B., Barros, V., Stocker, T.F., Qin, D., Dokken, D., Ebi, K.L., Mastrandrea, M. D., Mach, K. J., Plattner, G.-K., Allen, S., Tignor, M. and P. M. Midgley (eds.)]. Cambridge University Press, Cambridge, United Kingdom and New York, NY, USA: 339-392.
- Murray, V., G. McBean, M. Bhatt, S. Borsch, T.S. Cheong, W.F. Erian, S. Llosa, F. Nadim, M. Nunez, R. Oyun, A.G. Suarez (Lead authors) and Mechler, R. et al. (Contributing authors) (2012). Case studies. In: Managing the Risks of Extreme Events and Disasters to Advance Climate Change Adaptation [Field, C.B., V. Barros, T.F. Stocker, D. Qin, D.J. Dokken, K.L. Ebi, M.D. Mastrandrea, K.J. Mach, G.-K. Plattner, S.K. Allen, M. Tignor, and P.M. Midgley (eds.)]. A Special Report of Working Groups I and II of the Intergovernmental Panel on Climate Change (IPCC). Cambridge University

- Press, Cambridge, UK, and New York, NY, USA, 487-542
- O'Brien, K., M. Pelling, A. Patwardhan, S. Hallegatte, A. Maskrey, T. Oki, U. Oswald-Spring, T. Wilbanks, P.Z. Yanda (Lead authors) and Mechler, R. et al. (Contributing authors) (2012). Toward a sustainable and resilient future. In: *Managing the Risks of Extreme Events and Disasters to Advance Climate Change Adaptation* [Field, C.B., V. Barros, T.F. Stocker, D. Qin, D.J. Dokken, K.L. Ebi, M.D. Mastrandrea, K.J. Mach, G.-K. Plattner, S.K. Allen, M. Tignor, and P.M. Midgley (eds.)]. A Special Report of Working Groups I and II of the Intergovernmental Panel on Climate Change (IPCC). Cambridge University Press, Cambridge, UK, and New York, NY, USA, 437-486.
- Cardona, O.D., M.K. van Aalst, J. Birkmann, M. Fordham, G. McGregor, R. Perez, R.S. Pulwarty, E.L.F. Schipper, and B.T. Sinh (Lead authors) and Mechler, R. et al. (Contributing authors) (2012). Determinants of risk: exposure and vulnerability. In: *Managing the Risks of Extreme Events and Disasters to Advance Climate Change Adaptation* [Field, C.B., V. Barros, T.F. Stocker, D. Qin, D.J. Dokken, K.L. Ebi, M.D. Mastrandrea, K.J. Mach, G.-K. Plattner, S.K. Allen, M. Tignor, and P.M. Midgley (eds.)]. A Special Report of Working Groups I and II of the Intergovernmental Panel on Climate Change (IPCC). Cambridge University Press, Cambridge, UK, and New York, NY, USA, 65-108.
- Handmer, J., Y. Honda, Z.W. Kundzewicz, N. Arnell, G. Benito, J. Hatfield, I.F. Mohamed, P. Peduzzi, S. Wu, B. Sherstyukov, K. Takahashi, Z. Yan (Lead authors) and Mechler, R. et al. (Contributing authors) (2012). Changes in impacts of climate extremes: human systems and ecosystems. In: *Managing the Risks of Extreme Events and Disasters to Advance Climate Change Adaptation* [Field, C.B., V. Barros, T.F. Stocker, D. Qin, D.J. Dokken, K.L. Ebi, M.D. Mastrandrea, K.J. Mach, G.-K. Plattner, S.K. Allen, M. Tignor, and P.M. Midgley (eds.)]. A Special Report of Working Groups I and II of the Intergovernmental Panel on Climate Change (IPCC). Cambridge University Press, Cambridge, UK, and New York, NY, USA, 231-290.
- Hochrainer-Stigler, S., Sharma, R.B, and Mechler, R. (2012). Disaster Microinsurance for Pro-Poor Risk Management: Evidence from South Asia. *Journal of Integrated Disaster Risk Management*, 2(2): 1-19.
- IPCC (2011). Summary for Policymakers. In: *Intergovernmental Panel on Climate Change Special Report on Managing the Risks of Extreme Events and Disasters to Advance Climate Change Adaptation* [Field, C. B., Barros, V., Stocker, T.F., Qin, D., Dokken, D., Ebi, K.L., Mastrandrea, M. D., Mach, K. J., Plattner, G.-K., Allen, S., Tignor, M. and P. M. Midgley (eds.)]. Cambridge University Press, Cambridge, United Kingdom and New York, NY, USA
- Linnerooth-Bayer, J., Hochrainer, S., Mechler, R. (2011). Insurance against Losses from Natural Disasters in Developing Countries. Evidence, gaps and the way forward. *Journal of Integrated Disaster Risk Management* DOI10.5595/idrim.2011.0013
- van Vuuren, D., Isaac, M., Kundzewicz, Z., Arnell, N., Barker, T., Criqui, P., Berkhout, F., Hilderink, H., Hinkel, J., Hof, A., Kitous, A., Kram, T., Mechler, R., Scricciu, S. (2011). The use of scenarios as the basis for combined assessment of climate change mitigation and adaptation, *Global Environmental Change*, doi: 10.1016/j.gloenvcha.2010.11.003.
- Hochrainer, S. and Mechler, R. (2011). Natural Disaster Risk in Asian Megacities: A Case for Risk Pooling? *Cities*. DOI 10.1016/j.cities.2010.09.00
- Mechler, R., Rezai, A., Stagl, S. (2010). Is Green Growth feasible? Some reflections and implications for Austria. *Wirtschaftspolitische Blätter* (4): 451-465.
- Mechler, R. and Z.W. Kundzewicz (2010). Assessing adaptation to extreme weather events in Europe—Editorial. *Mitigation and Adaptation Strategies for Global Change* 15 (7): 611-620.
- Aakre, S., I. Banaszak, R. Mechler, D. Rübhelke, A. Wreford and H. Kalirai (2010). Financial adaptation to disaster risk in the European Union. *Mitigation and Adaptation Strategies for Global Change* 15 (7): 721-736
- Mechler, R., S. Hochrainer, A. Aaheim, H. Salen and A. Wreford (2010). Modelling economic impacts

- and adaptation to extreme events: Insights from European case studies. *Mitigation and Adaptation Strategies for Global Change* 15 (7): 737-762
- Hochrainer, S., J. Linnerooth-Bayer and R. Mechler (2010). The European Union Solidarity Fund. *Mitigation and Adaptation Strategies for Global Change* 15 (7): 797-810
- Hochrainer, S., Mechler, R., Kull, D. (2010). Micro-Insurance Against Drought Risk in a Changing Climate: Assessing demand and supply considerations. *International Journal of Climate Change Strategies and Management*, doi 10.1108/17568691011040407.
- Linnerooth-Bayer, J., Suarez, P., Victor, M. and Mechler, R. (2009). Drought insurance for subsistence farmers in Malawi. *Natural Hazards Observer* 33 (5): 1-8.
- Patt, A., van Vuuren, D., Berkhout, F., Aaheim, A., Hof, A., Isaac, M., Mechler, R. (2009). Adaptation in integrated assessment modeling: where do we stand? *Climatic Change*, doi 10.1007/s10584-009-9687
- Hochrainer, S., Mechler, R., Pflug, G. (2009). Climate change and financial adaptation in Africa: Investigating the impact of climate change on the robustness of index-based microinsurance in Malawi. *Mitigation and Adaptation Strategies for Global Change* 14: 231-250
- Lugeri, N., Hochrainer, S. and Mechler, R. (2009). Going to Extremes. *European Research and Innovation Review* 8: 22-23
- Linnerooth-Bayer, J., Mechler, R. (2007). Disaster safety nets for developing countries: Extending public-private partnerships. *Environmental Hazards* 7: 54-61
- Cardenas, V., Hochrainer, S., Mechler, R., Pflug, G., Linnerooth-Bayer, J. (2007). Sovereign financial disaster risk management: the case of Mexico. *Environmental Hazards* 7: 40-53
- Linnerooth-Bayer, J., R. Mechler and M.J. Mace (2007). Insurance for Assisting Adaptation to Climate Change in developing countries. A proposed strategy. *Climate Policy* 6 : 621-636
- Hochrainer, S., and R. Mechler (2006). Naturkatastrophen: Auswirkungen, Lösungsansätze und Rollen fuer Wissenschaft, Staat und Wirtschaft. *Wirtschaftspolitische Blätter* 4: 561-579
- Derwent, R.G., P.G. Simmonds, S. O'Doherty, D.S. Stevenson, W.J. Collins, M.G. Sanderson, C.E. Johnson, F. Dentener, J. Cofala, R. Mechler, and M. Amann (2006). External influences on Europe's air quality: Baseline methane, carbon monoxide and ozone from 1990 to 2030 at Mace Head, Ireland. *Atmospheric Environment*, 40: 844-855
- Linnerooth-Bayer, J., R. Mechler, G. Pflug (2005). Refocusing Disaster Aid. *Science* 309: 1044-1046
- Freeman, P., L. Martin, R. Mechler, K. Warner (2004). A Methodology for Incorporating Natural Catastrophes into Macroeconomic Projections. *Disaster Prevention and Management* 13: 337-342
- Derwent, R., S. Stevenson, R. Doherty, W. Collins, M. Sanderson, C. Johnson, J. Cofala, R. Mechler, M. Amann, F. Dentener (2004). The Contribution from Shipping Emissions to Air Quality and Acid Deposition in Europe. *AMBIO* 34: 54-59
- Dentener, F., D. Stevenson, J. Cofala, R. Mechler, M. Amann, P. Bergamaschi, F. Raes, R. Derwent (2004). The impact of air pollutant and methane emission controls on tropospheric ozone and radiative forcing: CTM calculations for the period 1990-2030. *Atmospheric Chemistry and Physics Discussions* 4, 8471-8538
- Werner, U., R. Mechler, T. Plapp (2003). Hochwasser 2002 - Wechselwirkungen zwischen der Finanzierung von Überschwemmungsschäden und der Wahrnehmung von Hochwasserrisiken. *Zeitschrift für Versicherungswesen* 54: 722-727

Books

- Amendola, A., Ermolieva, T., Linnerooth-Bayer, Mechler, R. (eds.) (2013). *Integrated Catastrophe Risk Modeling. Supporting Policy Processes*. Springer, Heidelberg
- Mechler, R. (2004). *Natural Disaster Risk Management and Financing Disaster Losses in Developing*

Countries, Verlag für Versicherungswirtschaft, Karlsruhe.

Book chapters

- Mitchell, T., Mechler, R., Harris, K (2014). Economics of adaptation to extreme events. Book chapter. In Markandya, A. Sainz de Murieta, E. Galarraga, I. Handbook on the Economics of Adaptation. Routledge.
- Mechler, R., Hochrainer, S., Linnerooth-Bayer, J., Pflug, G (2013). Public sector financial vulnerability to disasters: The IIASA CATSIM model. In; Measuring Vulnerability to Natural Hazards: Towards Disaster Resilient Societies, J Birkmann (ed.) United Nations University Press, Tokyo, Japan, pp.380-398
- Mechler R. (2013). Modeling aggregate economic risk: an introduction. In Integrated Catastrophe Risk Modeling: Supporting Policy Processes, A. Amendola, T. Ermolieva, J. Linnerooth-Bayer, and R. Mechler Springer, Dordrecht, The Netherlands, pp. 95-102
- Mechler R, Hochrainer-Stigler S, Nakano K. (2013). Managing indirect economic consequences of disaster risk: the case of Nepal. In Integrated Catastrophe Risk Modeling: Supporting Policy Processes, A. Amendola, T. Ermolieva, J. Linnerooth-Bayer, and R. Mechler Springer, Dordrecht, The Netherlands pp.145-169
- Amendola A, Ermolieva T, Linnerooth-Bayer J, Mechler R (2013). Catastrophe models for informing risk management: An introduction. In: Integrated Catastrophe Risk Modeling: Supporting Policy Processes, A. Amendola, T. Ermolieva, J. Linnerooth-Bayer, R. Mechler (eds) Springer, Dordrecht, The Netherlands, pp.3-12
- Hochrainer-Stigler S, Mechler R, Pflug G (2013). Modeling macro scale disaster risk: the CATSIM model. In Integrated Catastrophe Risk Modeling: Supporting Policy Processes, A. Amendola, T. Ermolieva, J. Linnerooth-Bayer, and R. Mechler (eds) Springer, Dordrecht, The Netherlands pp.119-144
- Hochrainer, S. and Mechler, R. (2013). Assessing Financial Adaptation Strategies to Extreme Events in Europe. In: Siebenhüner, B., Arnold, M., Eisenack, K., and Jacob, H. K. (eds.): Long-Term Governance for Social-Ecological Change. New York, Routledge: 93-112.
- Mechler, R. and Islam, N. (2013). Cost Benefit Analysis of Disaster Risk Management and Climate Adaptation in Bangladesh. In: D. Guha-Sapir and I. Santos. The Economic Impacts of Natural Disasters. Assessing the Costs of Prevention, Mitigation and Adaptation, Cambridge University:
- Mechler, R., Hochrainer, S., Aaheim, A., Kundzewicz, Z., Luger, N., Moriondo, M., Salen, H., Bindi, M., Banaszak, I., Chorynski, A., Genovese, E., Kalirai, H., Linnerooth-Bayer, J., Lavalle, C., McEvoy, D., Matczak, P., Radziejewski, M., Rübbecke, D., Schelhaas, M.-J., Szwed, M., Wreford, A. (2010). A risk management approach for assessing adaptation to changing flood and drought risks in Europe. In: M. Hulme, H. Neufeldt (eds.). Making Climate Change Work for Us: European Perspectives on Adaptation and Mitigation Strategies. Cambridge University: 200-229
- Aaheim, A., Dokken, T., Hochrainer, S., Hof, A., Jochem, E., Mechler, R., van Vuuren, D., Neufeldt, H., Wei, T. (2010). National responsibilities for adaptation strategies: Lessons from four modelling frameworks. In: M. Hulme, H. Neufeldt (eds.). Making Climate Change Work for Us: European Perspectives on Adaptation and Mitigation Strategies. Cambridge University: 87-112
- van Vuuren, D, Isaac, M., Kundzewicz, Z., Arnell, N, Barker, T., Criqui, P., Bauer, N., Berkhout, F., Hilderink, H., Hinkel, J., Hochrainer, S., Hof, A., Kitous, A., Kram, T., Luger, N., Mechler, R., Scriciu, S. (2010). Scenarios as the Basis for Assessment of Mitigation and Adaptation. In: M. Hulme, H. Neufeldt (eds.). Making Climate Change Work for Us: European Perspectives on Adaptation and Mitigation Strategies. Cambridge University: 54-86
- Linnerooth-Bayer, J., Mechler, R., Bals, C. (2010). Insurance Instruments for Adapting to Climate Risks. Considerations for the Bali Roadmap. In: M. Hulme, H. Neufeldt (eds.). Making Climate Change Work for Us: European Perspectives on Adaptation and Mitigation Strategies. Cambridge University: 340-365
- Hochrainer, S., Mechler, R. (2008). Assessing financial and economic

- vulnerability to natural hazards: bridging the gap between scientific assessment and the implementation of disaster risk management with the CatSim model. Patt, A., Schröter, D., Klein, R., de la Vega-Leinert, A. (eds). *Assessing Vulnerability to Global Environmental Change*. Earthscan.
- Mechler, R., J. Linnerooth-Bayer, S. Hochrainer, G. Pflug (2006). *Assessing Financial Vulnerability and Coping Capacity: The IIASA CATSIM Model*. In J. Birkmann (ed.). *Measuring Vulnerability and Coping Capacity to Hazards of Natural Origin. Concepts and Methods*. United Nations University Press, Tokyo: 380-398
- Mechler, R. (2004). *Macroeconomic impacts of natural disasters*. In K. Demeter, N.E. Erkan, A. Guner (eds). *The Role of Local Governments in Reducing the Risk of Disasters*. The World Bank Institute, Washington, DC: 35-47
- Mechler, R. (2003). *Natural Disaster Risk and Cost-Benefit Analysis*. In A. Kreimer et al. (eds.). *The Future of Disaster Risk: Building Safer Cities*. World Bank, Washington DC: 45-56
- Mechler, R. (2001). *Naturkatastrophen und Globaler Wandel*. in: W. Schulz et al. *Lexikon Nachhaltiges Wirtschaften*. R. Oldenbourg-Verlag, München: 253-259

Reports, working papers and conference proceedings

- Kumar, A., Arambepola, N., Mechler, R., and Hochrainer-Stigler, S. (2012). *An Approach for National Earthquake Risk Assessment: Case Study for Nepal*. Proceedings of the 15th World Conference on Earthquake Engineering (WCEE), Lisbon, Portugal.
- Mitchell, T., Mechler, R., Harris, K. (2012). *Tackling exposure: placing disaster risk management at the heart of national economic and fiscal policy*. CDKN guidance note. Climate and Development Knowledge Network (CDKN)- Overseas Development Institute (ODI)
- Bräuninger, M., Butzengeiger-Geyer, S., Dlugolecki, A., Hochrainer, S., Köhler, K., Linnerooth-Bayer, J., Mechler, R., Michaelowa, A., Schulze, S. (2011). *Application of economic instruments for adaptation to climate change*. Report to the European Commission, Directorate General CLIMA, Brussels.
- Bhavnani Sharma, R., Hochrainer, S. and Mechler, R. (2010). *Impact Assessment of Disaster Microinsurance for Pro-Poor Risk Management: Evidence from South Asia*. All India Disaster Management Institute (AIDMI), Ahmedabad, Gujarat, India.
- Mechler, R., Hochrainer, S., Pflug, G., Lotsch, A. with Williges, K. (2010). *Assessing the Financial Vulnerability to Climate-Related Natural Hazards*. Background Paper for the Development and Climate Change World Development Report 2010. Policy Research Working Paper 5232. World Bank, Washington, DC.
- Mechler, R. (2009). *Disasters and Economic Welfare. Can National Savings Help Explain Post-disaster Changes in Consumption?* World Bank Policy Research Working Paper 4988, The World Bank Sustainable Development Network and Global Facility for Disaster Reduction and Recovery Unit.
- Kunreuther, H., Michel-Kerjan, E., Hochrainer, S., Kull, D., Linnerooth-Bayer, J. Mechler, R., Muir-Wood, R., Ranger, N., Vaziri, P., Young, M. (2009). *The Challenges and Importance of Investing in Cost Effective Measures for Reducing Losses From Natural Disasters in Emerging Economies*. Report for the World Bank Global Facility for Disaster Risk Reduction (GFDRR).
- Mechler, R., Hochrainer, S., Kull, D., Chopre, S., Singh, P., Opitz-Stapleton, S., Wajih, S. (2009). *Uttar Pradesh Drought Cost-Benefit Analysis*. Risk to Resilience Working Paper 5. Moench, M., Caspari, E. & A. Pokhrel (eds.), ISET, ISET-Nepal and ProVention, Kathmandu, Nepal. Provention Consortium, Geneva.
- Moench, M., Ahmed, S., Mustafa, D., Khan, F., Mechler, R., Kull, D., Dixit, A., Opitz-Stapleton, S., and The Risk to Resilience Study Team (2009). *Moving from Concepts to Practice: A Process and Methodology Summary for Identifying Effective Avenues for Risk Management Under Changing Climatic Conditions*. From Risk to Resilience Working Paper No. 8. Moench, M., Caspari, E. & A. Pokhrel (eds.), ISET, ISET-Nepal and ProVention, Kathmandu, Nepal.

- Mechler, R. (2009). From Risk to Resilience. The Cost-Benefit Analysis Methodology. From Risk to Resilience Working Paper No. 1. Moench, M., Caspari, E. & A. Pokhrel (eds.), ISET, ISET-Nepal and ProVention, Kathmandu, Nepal. Provention Consortium, Geneva.
- Linnerooth-Bayer, J., C. Bals, R. Mechler (2008). Insurance Instruments for Adapting to Climate Risks. A Proposal for the Bali Action Plan. Germanwatch, Bonn.
- Linnerooth-Bayer, J. and R. Mechler (2008). Insurance against Losses from Natural Disasters in Developing Countries. Background paper for United Nations World Economic and Social Survey (WESS).
- Aaheim, A., Berkhout, F., McEvoy, D., Mechler, R., Neufeldt, H. Patt, A. Watkiss, P., Wreford, A., Kundzewicz, Z., Lavallo, C., Egenhofer, C. (2008). Adaptation to Climate Change: Why is it needed and how can it be implemented? Centre for European Policy Studies (CEPS) Policy Brief, Brussel.
- Mechler, R., S. Hochrainer, K. Williges (2008). The special nature of natural disaster risk in Asian megacities. A case for megacity risk pooling? ADB conference "Natural Catastrophe Risk Insurance Mechanisms for Asia and the Pacific". 04-05 November 2008, Tokyo, Japan
- Linnerooth-Bayer, J., Bals, C. and Mechler, R. (2008). Climate Change: What Role for Insurance? IIASA Policy Brief #04, IIASA.
- Aaheim, A., Berkhout, F., McEvoy, D., Mechler, R., Neufeldt, H. Patt, A. Watkiss, P., Wreford, A., Kundzewicz, Z., Lavallo, C., Egenhofer, C. (2008). Adaptation to Climate Change: Why is it needed and how can it be implemented? Centre for European Policy Studies (CEPS) Policy Brief, Brussel.
- Hochrainer, S., Mechler, R., Pflug, G., Lotsch, A. (2008). Investigating the Impact of Climate Change on the Robustness of Index-based Microinsurance in Malawi. World Bank Policy Research Working Paper 4631. Development Research Group, The World Bank: Washington DC.
- Moench, M., Mechler, R. and S. Stapleton (2007). Guidance Note on the Costs and Benefits of Disaster Risk Reduction. Prepared for UN - ISDR High Level Platform on Disaster Risk Reduction, Geneva, June 4-7, 2007.
- Tanner, T., Hassan, A., Islam, K., Conway, D., Mechler, R., Ahmed, A. and Alam, M. (2007). ORCHID Piloting Climate Risk Screening in DFID Bangladesh. Detailed Research Report. Institute of Development Studies, University of Sussex, UK.
- Tanner, T., Hassan, A., Islam, K., Conway, D., Mechler, R., Ahmed, A. and Alam, M. (2007). ORCHID: Piloting Climate Risk Screening in DFID Bangladesh. Summary Research Report. Institute of Development Studies, University of Sussex, UK.
- Islam, K. and Mechler, R. (2007). ORCHID: Piloting Climate Risk Screening in DFID Bangladesh. An Economic and Cost Benefit Analysis of Adaptation Options. Institute of Development Studies, University of Sussex, UK
- Mechler, R., J. Linnerooth-Bayer, and D. Peppiatt (2006). Microinsurance for natural disaster risks? Insights from a ProVention/IIASA research initiative. In S. Nicklin, B. Cornwell, and S. Fairbrother (eds.). Real Risk. Leicester, Tudor Rose: 41-42
- Mechler, R. and J. Linnerooth-Bayer (2006). Potential Benefits and Limitations of Micro-Insurance as a Risk Transfer Mechanism for Developing Countries, in Micro-finance and disaster risk reduction. In P.G. Chakrabarti and M. Bhatt (eds.). New Delhi, Knowledge World: 219-225
- Mechler, R., J. Linnerooth-Bayer with D. Peppiatt (2006). Disaster Insurance for the Poor? A ProVention/IIASA study. A review of microinsurance for natural disaster risks in developing countries. Provention consortium, Geneva.
- Bals, C., Burton, I., Butzengeiger, S., Dlugolecki, A., Gurenko, E., Hoekstra, E., Höpfe, P., Kumar, R., Linnerooth-Bayer, J., Mechler, R., Warner, K. (2005). Insurance-related Options for Adaptation to Climate Change. Executive summary for report on occasion of UNFCCC COP meeting, Montreal, The Munich Climate Insurance Initiative (MCII).

- Linnerooth-Bayer, J. and R. Mechler (2005). Financing Disaster Risks in developing and emerging-economy countries. Policy Issues in Insurance No. 08: Catastrophic Risks and Insurance. OECD, Paris: 105-162
- Linnerooth-Bayer, J. and R. Mechler (2005). Insurance-related mechanisms for assisting developing countries adapt to Climate Change. In Bals, C., Burton, I., Butzengeiger, S., Dlugolecki, A., Gurenko, E., Hoekstra, E., Höpfe, P., Kumar, R., Linnerooth-Bayer, J., Mechler, R., Warner, K. (2005). Insurance-related Options for Adaptation to Climate Change. Report on occasion of UNFCCC COP meeting, Montreal, The Munich Climate Insurance Initiative (MCII): 38-58.
- Hoeglund-Isaksson, L., R. Mechler (2005). The GAINS Model for Greenhouse Gases - Version 1.0: Methane (CH₄). IIASA Interim Report. IIASA Interim Report IR-05-054 .
- Mechler, R. (2005). Cost-benefit analysis of natural disaster risk management in developing countries. Deutsche Gesellschaft für Technische Zusammenarbeit (GTZ), Eschborn.
- Mechler, R. and J. Weichselgartner (2003). Disaster Loss Financing in Germany – The Case of the Elbe River Floods 2002. Interim Report IR-03-021. IIASA, Laxenburg.
- Linnerooth-Bayer, J. and R. Mechler (2003). Climate Change, Extreme Weather and Burden Sharing, Pro-active Strategies for Implementation of Article 4.8 of the UNFCCC, Background paper for UNDP SIDS workshop on Insurance and Climate-Related Extreme Weather Events, Milan.
- Freeman, P., L. Martin, R. Mechler, K. Warner (2003). A Methodology for Incorporating Natural Catastrophes into Macroeconomic Projections. in: van der Veen, A., A. L. Vetere Arellano and J.-P. Nordvik (2003). Proceedings: Joint NEDIES and University of Twente Workshop - In search of a common methodology for damage estimation. Report EUR 20997 EN (2003), Bruxelles, Office for Official Publications of the European Communities, European Union: 151-165.
- Freeman, P. K., L. A. Martin, J. Linnerooth-Bayer, R. Mechler, G. Pflug and K. Warner (2003). Disaster Risk Management: National Systems for the Comprehensive Management of Disaster Risk and Financial Strategies for Natural Disaster Reconstruction. Inter-American Development Bank, Washington DC.
- Mechler, R., M. Amann and W. Schoepp (2002). Methodology to Estimate Changes in Statistical Life Expectancy Due to the Control of Particulate Matter in Air Pollution. IIASA Interim Report IR-02-035.
- Mechler, R., M. Amann and W. Schöpp (2002). Preliminary estimates of changes in statistical life expectancy due to the control of particulate matter air pollution in Europe. EMEP Co-operative Programme for Monitoring and Evaluation of the Long Range Transmission of Air Pollutants in Europe. Transboundary Particulate Matter in Europe: Status report 2002. Kjeller, Norway: 61-89.
- Obersteiner, M., C. Azar, S. Kossmeier, R. Mechler, K. Moellersten, S. Nilsson, K. Read, Y. Yamagata, J. Yan (2002). Managing Climate Risk, Interim Report IR-01-051. Laxenburg, Austria, IIASA.
- Freeman, P., L. Martin, J. Linnerooth-Bayer, R. Mechler, S. Saldana, K. Warner and G. Pflug (2002). Financing Reconstruction. Phase II Background Study for the Inter-American Development Bank Regional Policy Dialogue on National Systems for Comprehensive Disaster Management. Inter-American Development Bank, Washington DC.
- Freeman, P., L. Martin, R. Mechler, K. Warner with P. Hausman (2002). Catastrophes and Development, Integrating Natural Catastrophes into Development Planning, Disaster Risk Management Working Paper Series No. 4. World Bank, Washington DC.

DPRI AWARD 2017



The Disaster Prevention Research Institute, Kyoto University

Awarded on February 21, 2017