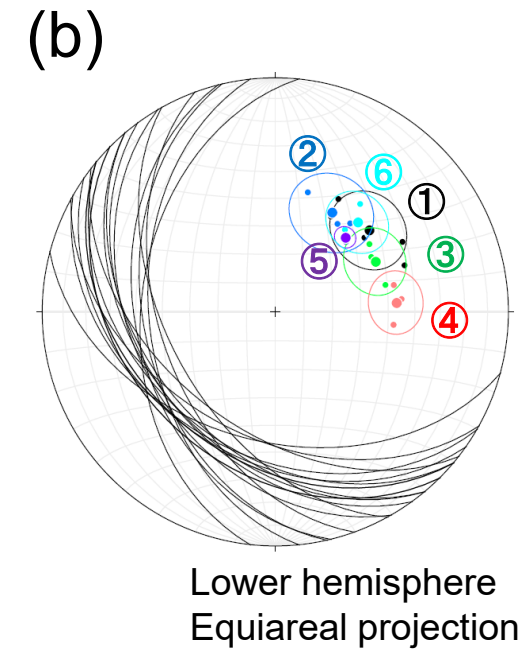
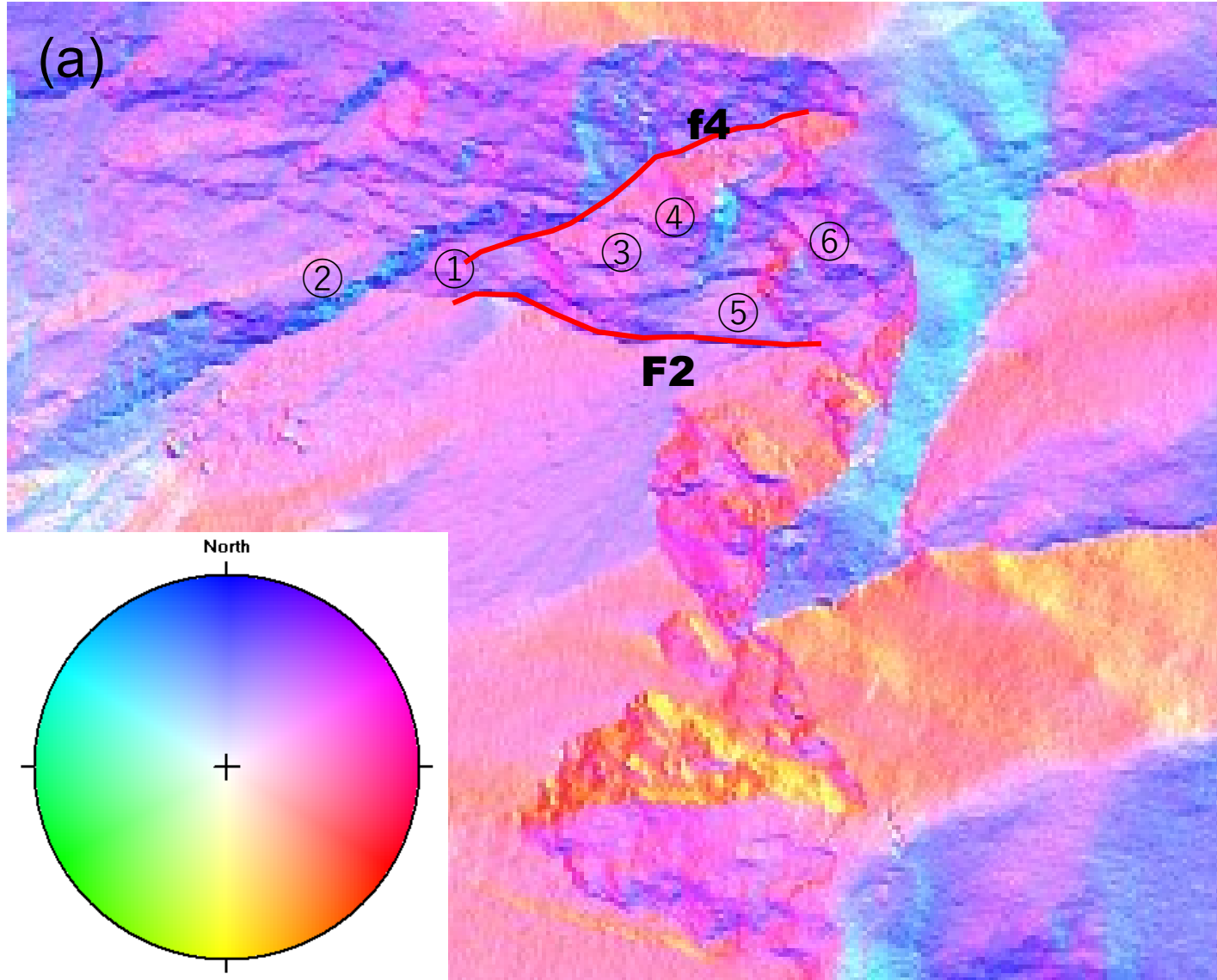


Photograph of the source area of the 2011 Uguhara landslide. Dashed lines are traces of the F2 and f4 faults.





Fisher mean vector of poles

- ① Trend 48.9, Plunge 45.8
- ② Trend 29.6, Plunge 49.5
- ③ Trend 63.3, Plunge 50.4
- ④ Trend 85.6, Plunge 46.9
- ⑤ Trend 43.3, Plunge 54.0
- ⑥ Trend 42.6, Plunge 46.8

(a) Dip direction and slope angle of the source area of the Uguhara landslide in 2011 drawn by Coltop3D (Jaboyedoff et al., 2009). The yellow portion shows north-facing slopes.

(b) Stereographic projection showing the orientations of geological discontinuities (shear plane) drawn by Stereonet ver.10.1.6. (Richard W. Allmendinger).