



京都大学  
KYOTO UNIVERSITY

The 2<sup>nd</sup> Kyoto University – National  
Taiwan University Symposium,  
September 1-2, 2014



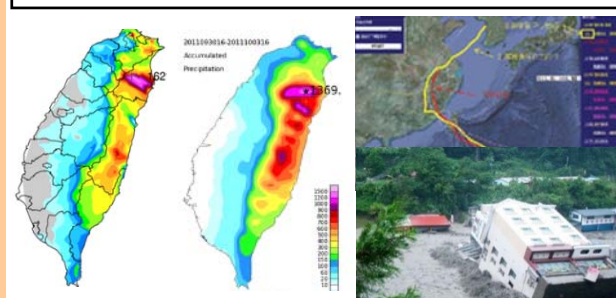
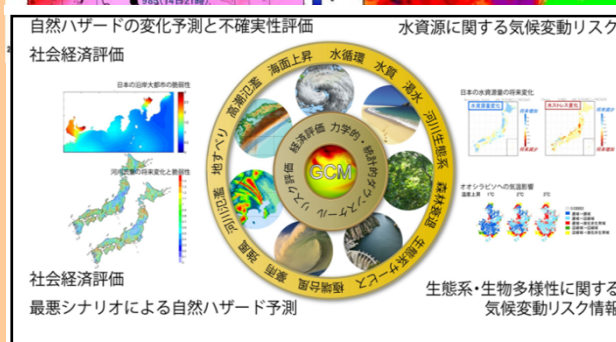
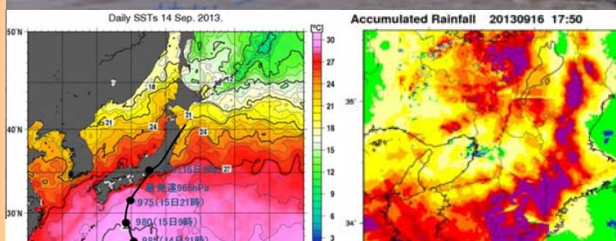
臺灣大學

National Taiwan University



# Advanced Disaster Prevention and Mitigation

**Date:** September 2, 2014, 9:30-13:00  
**Venue:** Kyoto University, Uji Campus  
**Collaborative Research Hub  
Building(連携研究棟), Room 301**



- Program**    **Chair: SUMI Tetsuya (DPRI-KU) and TAI-Jen Chen (NTU)**
- 9:30 -10:00    Opening Address and Introduction of DPRI  
**Vice Director, Prof. TATANO Hirokazu (DPRI-KU)**
  - 10:00-10:20    Taiwan Extreme Rainfall and Climate Change  
**Prof. KUO Hung-Chi (CCSD-NTU)**
  - 10:20-10:40    Rainfall Observations and Predictions with the Latest Multi-Parameter Weather Radars Network in Japan  
**Prof. NAKAKITA Eiichi (DPRI-KU)**
  - 10:40-11:00    Polarimetric Radar Study and Application in Taiwan  
**Prof. JOU Jong-Dao (WCDR-NTU)**
  - 11:00-11:20    **Coffee Break**  
**Chair: TAN Yih-Chi (NTU) and TANAKA Kenji (DPRI-KU)**
  - 11:20-11:40    Design and Operational Issues in Water Resources Management  
**Prof. HORI Tomoharu (DPRI-KU)**
  - 11:40-12:00    Sediment Concentration Measurement and Simulation in Reservoir for Desiltation Operation  
**Prof. SUNG Chia-Chi and Prof. LAI Jihn-Sung (WCDR-NTU)**
  - 12:00-12:20    Characteristics of Recent Rainfall in Japan  
**Prof. TANAKA Shigenobu (DPRI-KU)**
  - 12:20-12:40    Flood Inundation Modelling and its Applications in Taiwan  
**Prof. CHANG Tsang-Jung (WCDR-NTU)**
  - 12:40-13:00    Experimental and Numerical Study of Flushing Channel Formation in Shallow Reservoirs  
**Prof. SUMI Tetsuya and Mr. ESMAEILI Taymaz (DPRI-KU)**